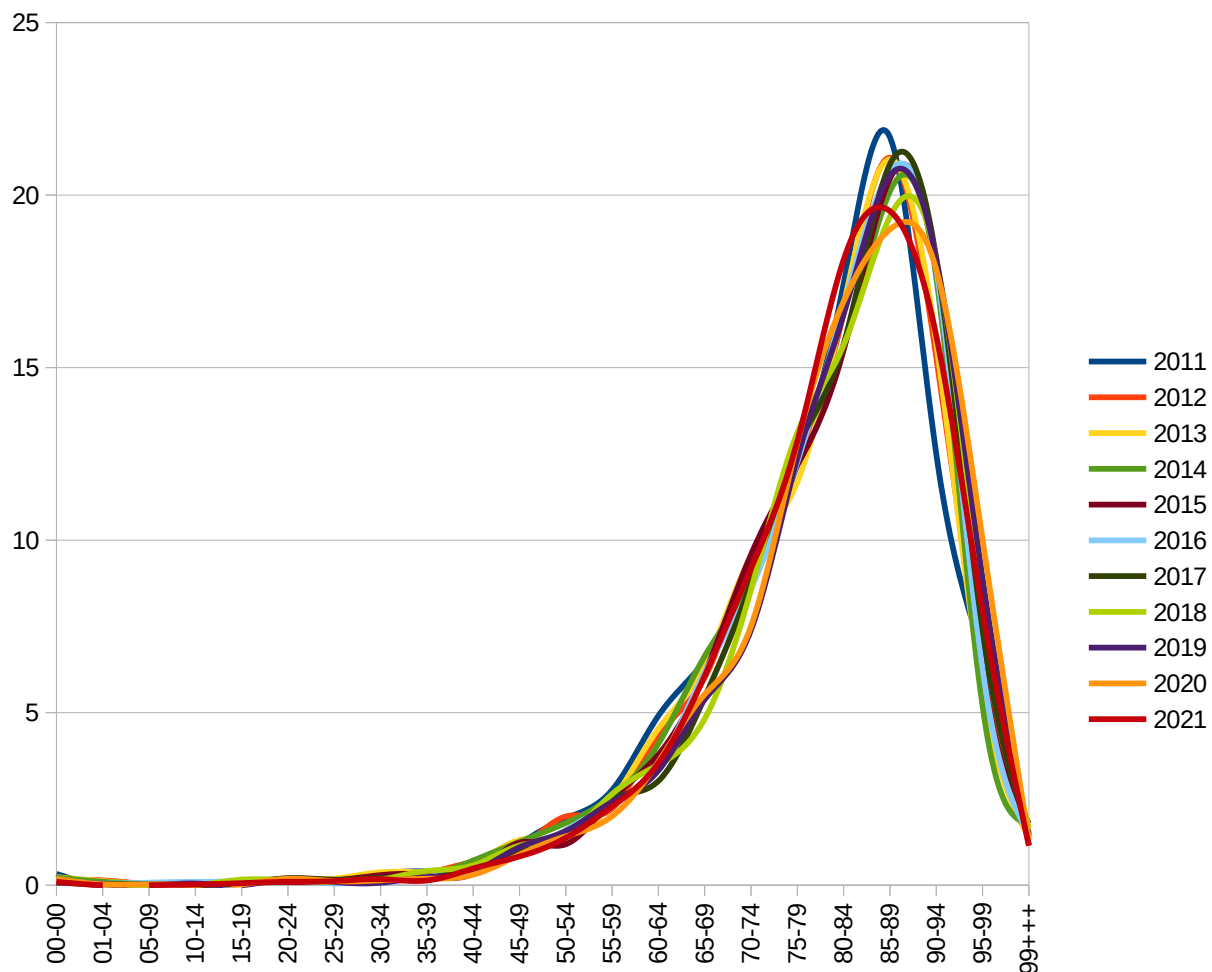


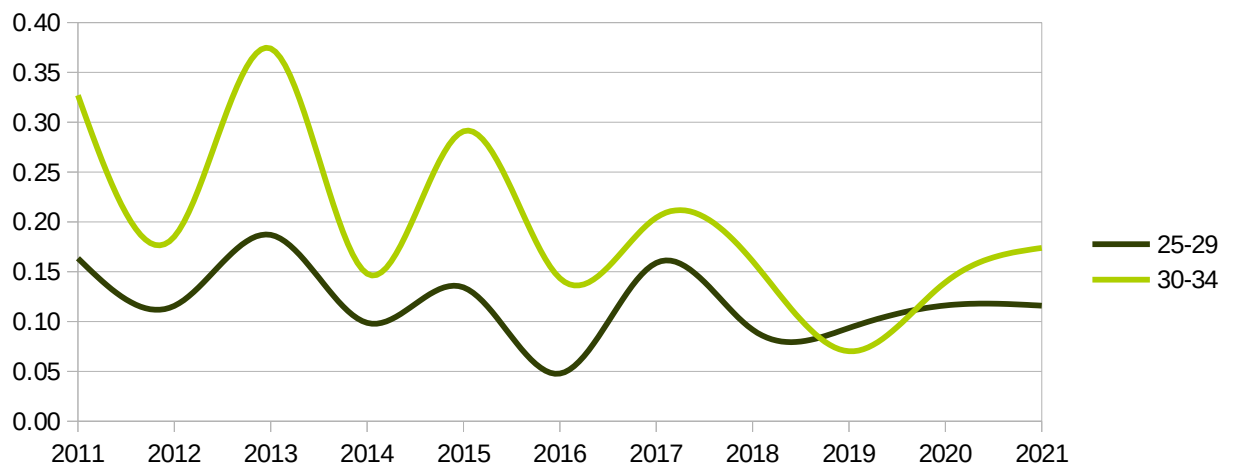
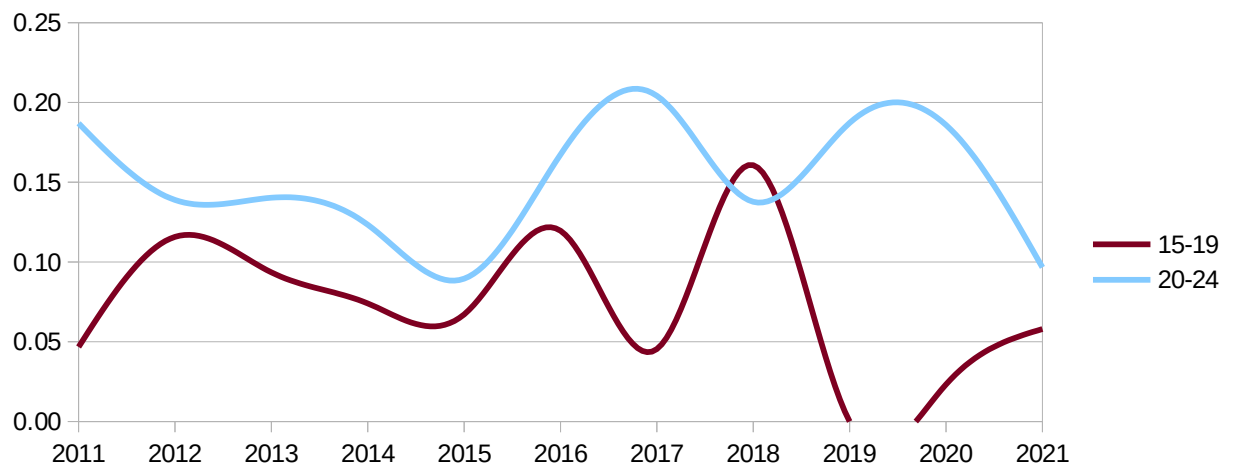
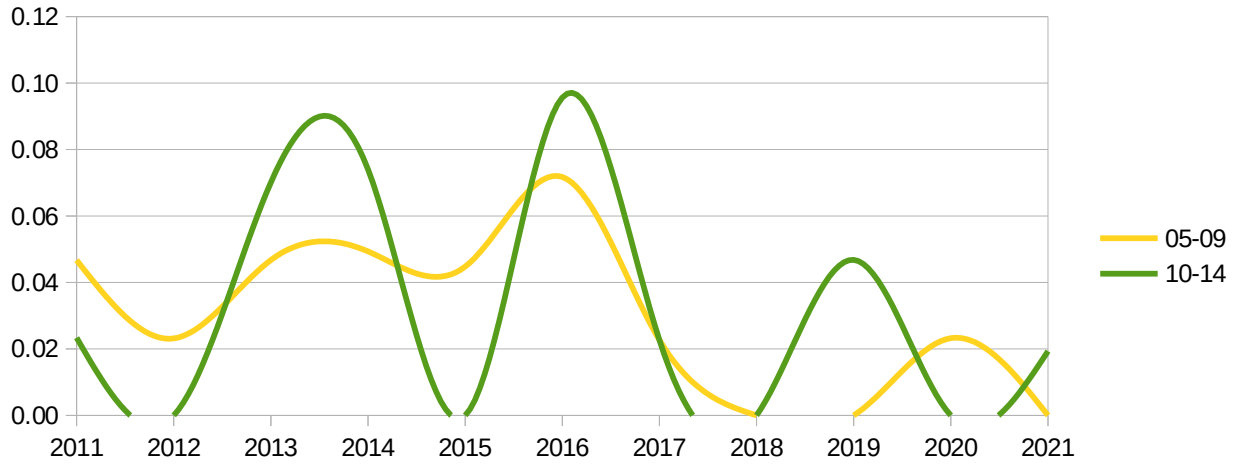
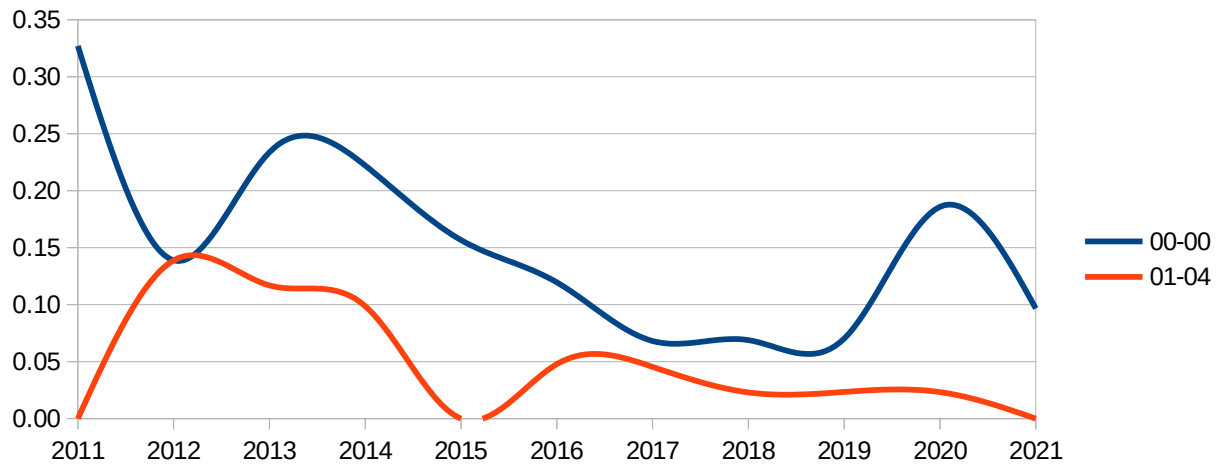
Regione - all -
 Provincia udine
 mese - multiple -

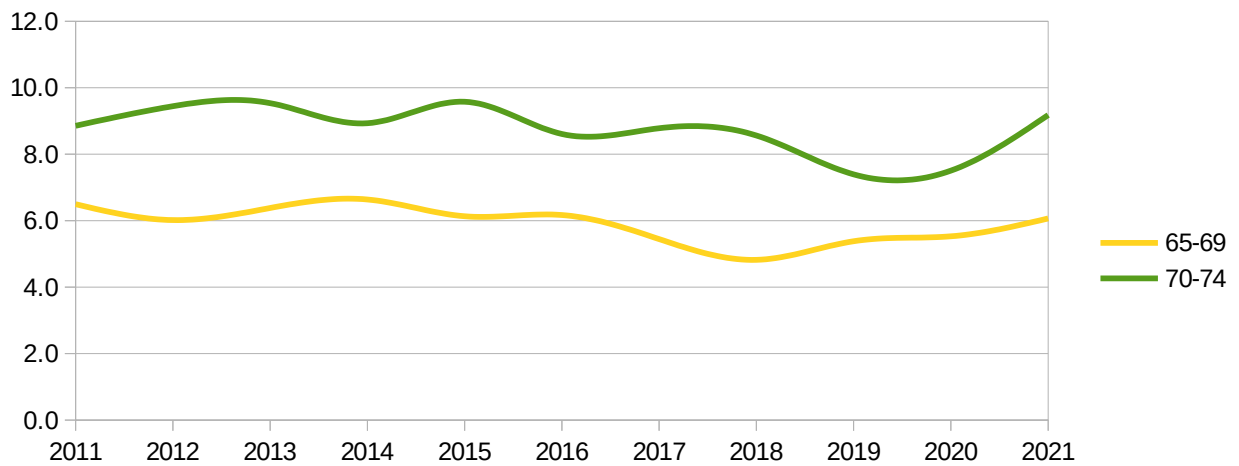
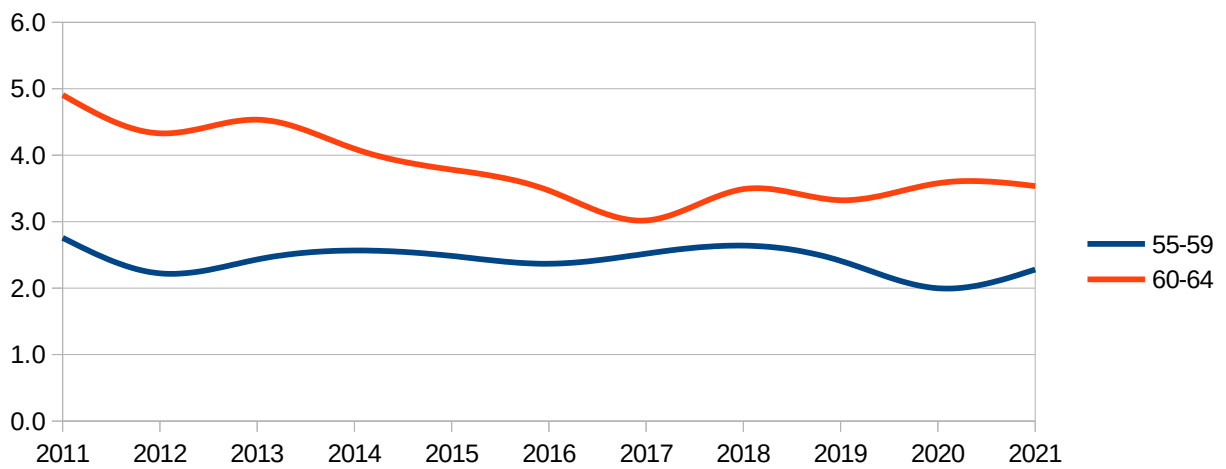
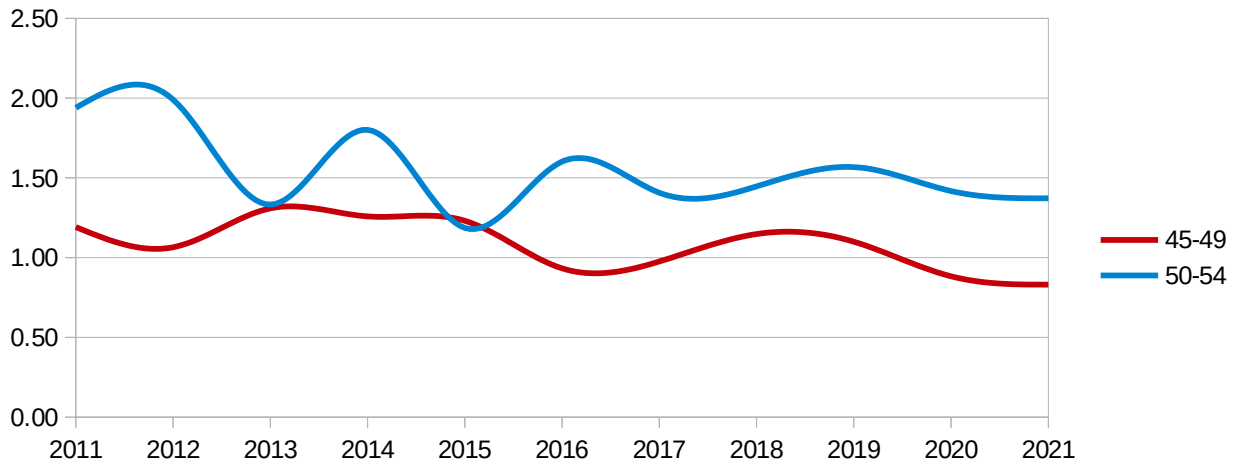
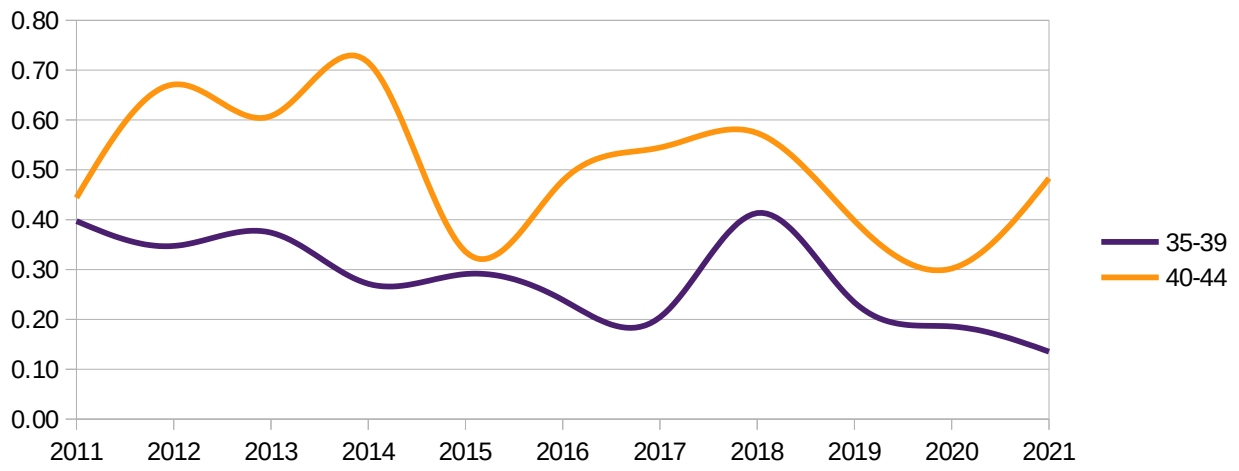
mesi gennaio → agosto
 Dati ISTAT al 31 agosto 2021

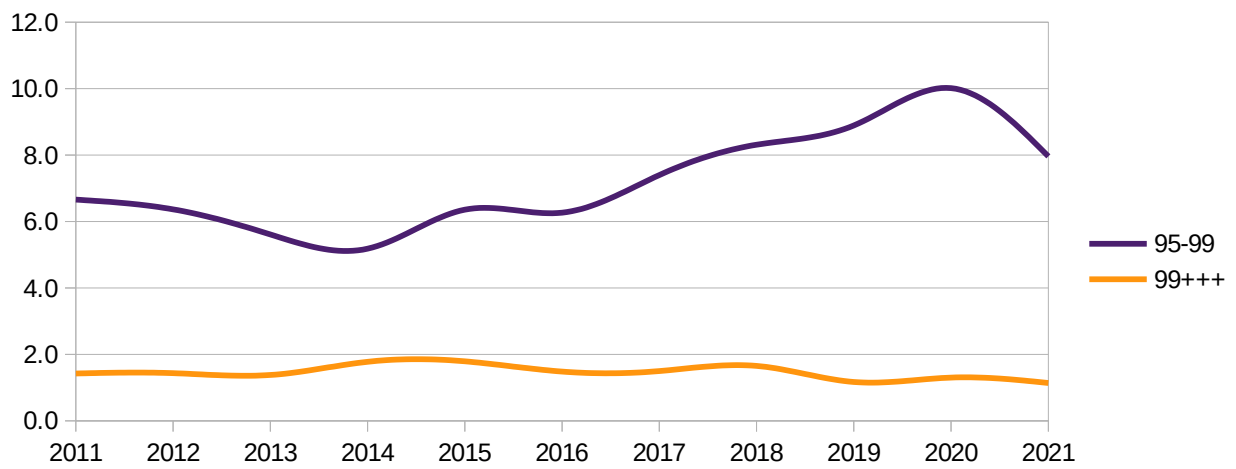
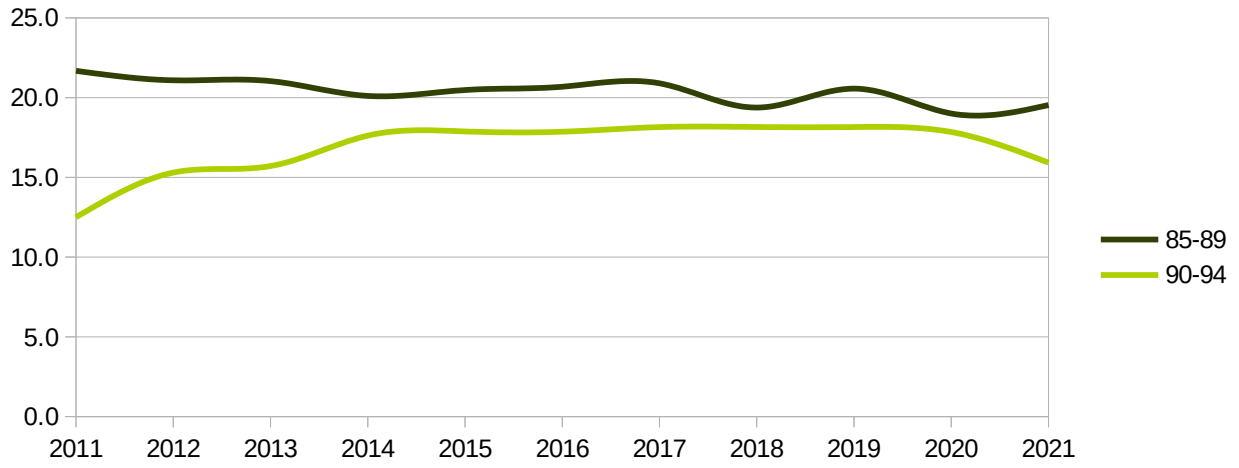
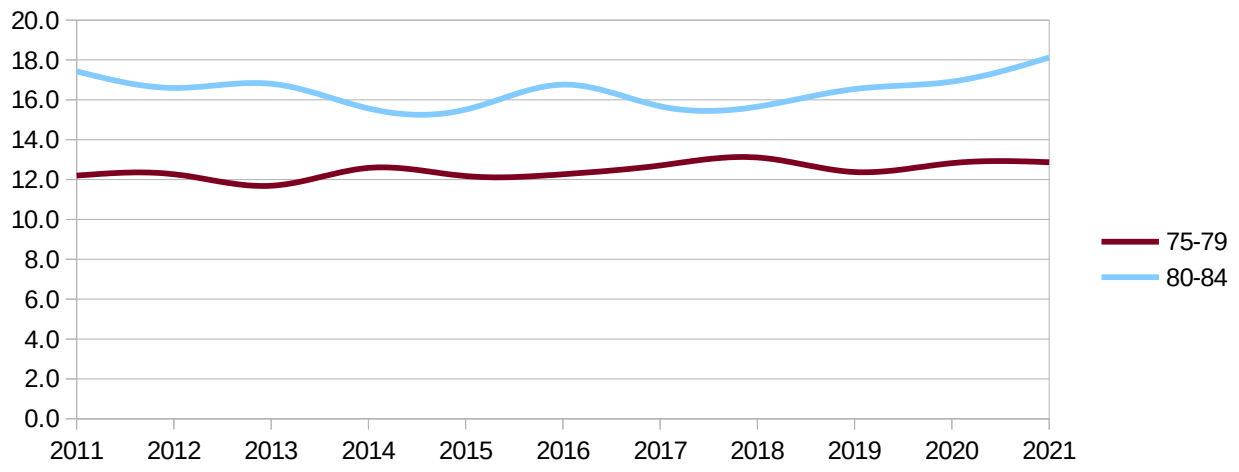
Distribuzione decessi per fascia d'età

eta	2011	2012	2013	2014	2015	2016	2017	2018	2019	2020	2021
00-00	0.33	0.14	0.23	0.22	0.16	0.12	0.07	0.07	0.07	0.19	0.10
01-04	0.00	0.14	0.12	0.10	0.00	0.05	0.05	0.02	0.02	0.02	0.00
05-09	0.05	0.02	0.05	0.05	0.04	0.07	0.02	0.00	0.00	0.02	0.00
10-14	0.02	0.00	0.07	0.07	0.00	0.10	0.02	0.00	0.05	0.00	0.02
15-19	0.05	0.12	0.09	0.07	0.07	0.12	0.05	0.16	0.00	0.02	0.06
20-24	0.19	0.14	0.14	0.12	0.09	0.17	0.20	0.14	0.19	0.19	0.10
25-29	0.16	0.12	0.19	0.10	0.13	0.05	0.16	0.09	0.09	0.12	0.12
30-34	0.33	0.19	0.37	0.15	0.29	0.14	0.20	0.16	0.07	0.14	0.17
35-39	0.40	0.35	0.37	0.27	0.29	0.24	0.20	0.41	0.23	0.19	0.14
40-44	0.44	0.67	0.61	0.72	0.34	0.48	0.54	0.57	0.40	0.30	0.48
45-49	1.19	1.06	1.31	1.26	1.23	0.93	0.98	1.15	1.10	0.88	0.83
50-54	1.94	1.99	1.33	1.80	1.19	1.60	1.41	1.45	1.57	1.42	1.37
55-59	2.76	2.22	2.43	2.57	2.48	2.37	2.52	2.64	2.41	2.00	2.28
60-64	4.91	4.33	4.53	4.10	3.78	3.47	3.02	3.49	3.32	3.58	3.54
65-69	6.50	6.02	6.38	6.64	6.13	6.17	5.45	4.82	5.38	5.53	6.07
70-74	8.86	9.44	9.54	8.93	9.58	8.61	8.78	8.56	7.39	7.50	9.18
75-79	12.20	12.27	11.69	12.58	12.18	12.27	12.71	13.11	12.38	12.83	12.87
80-84	17.43	16.60	16.81	15.57	15.51	16.76	15.68	15.66	16.54	16.91	18.13
85-89	21.68	21.09	21.04	20.11	20.48	20.68	20.90	19.38	20.57	19.01	19.54
90-94	12.50	15.30	15.71	17.62	17.88	17.86	18.15	18.16	18.16	17.84	15.92
95-99	6.66	6.37	5.61	5.18	6.36	6.26	7.40	8.31	8.89	10.01	7.96
99+++	1.43	1.44	1.38	1.78	1.79	1.48	1.50	1.65	1.17	1.30	1.14







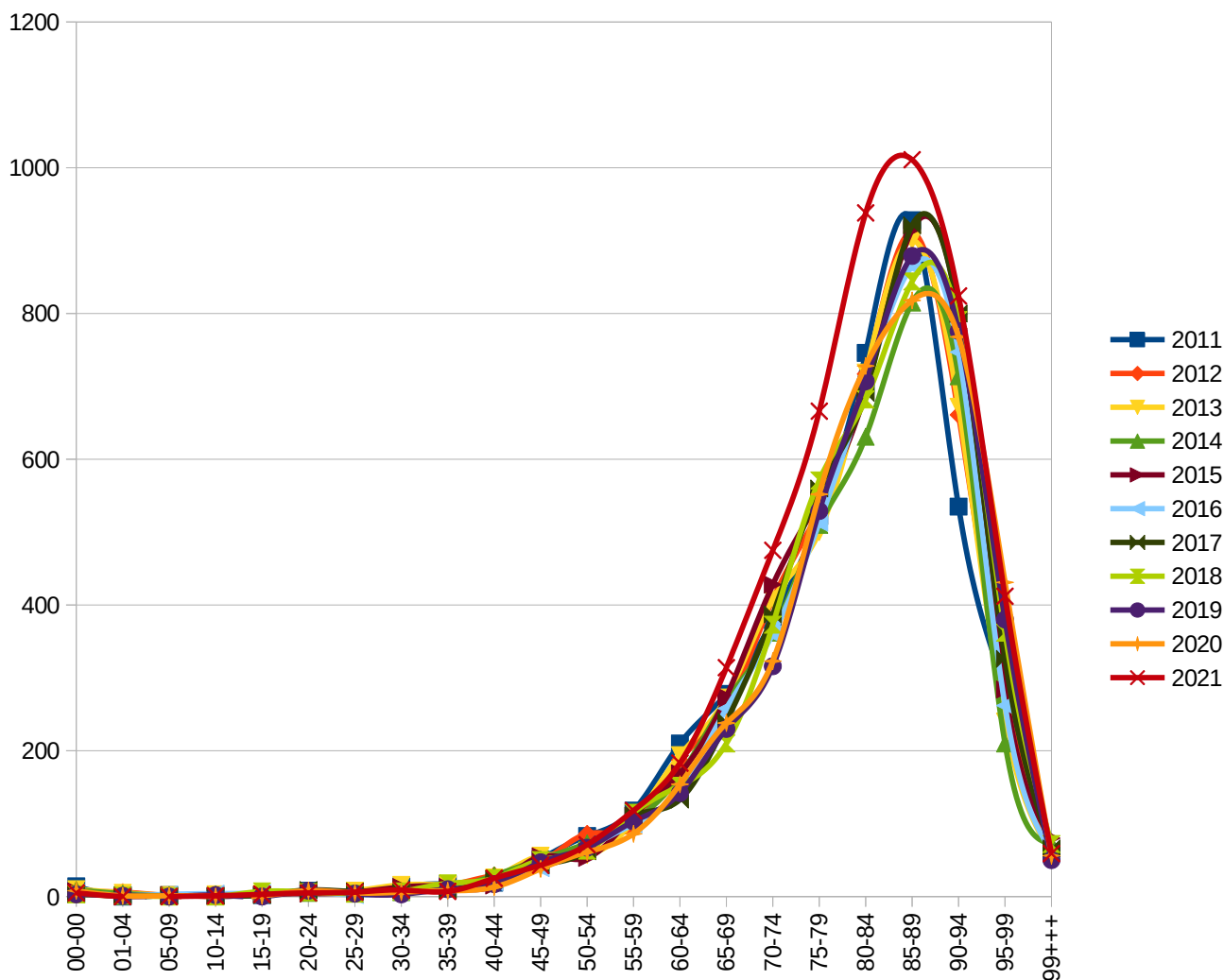


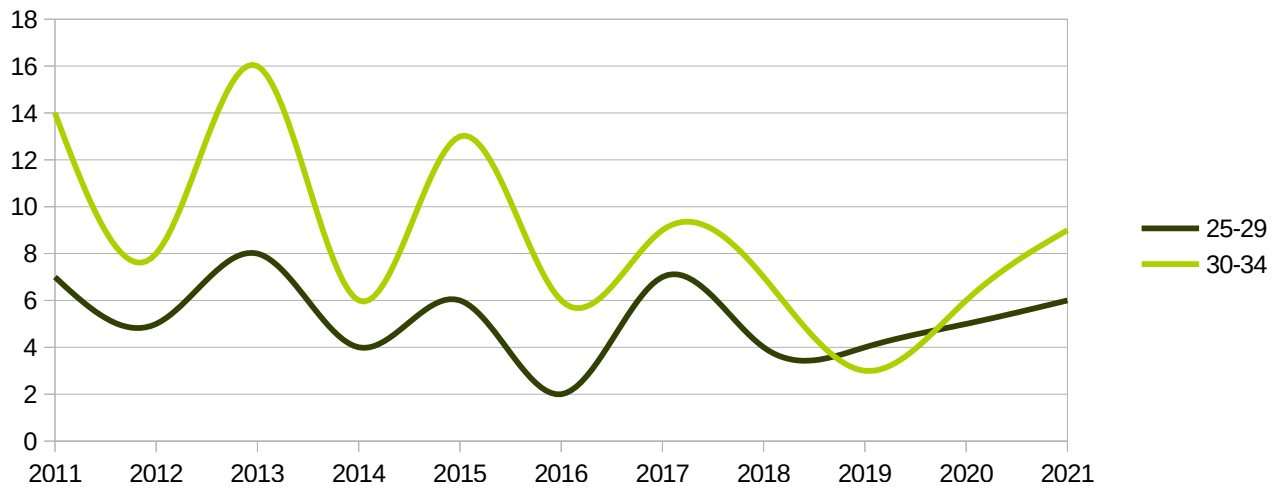
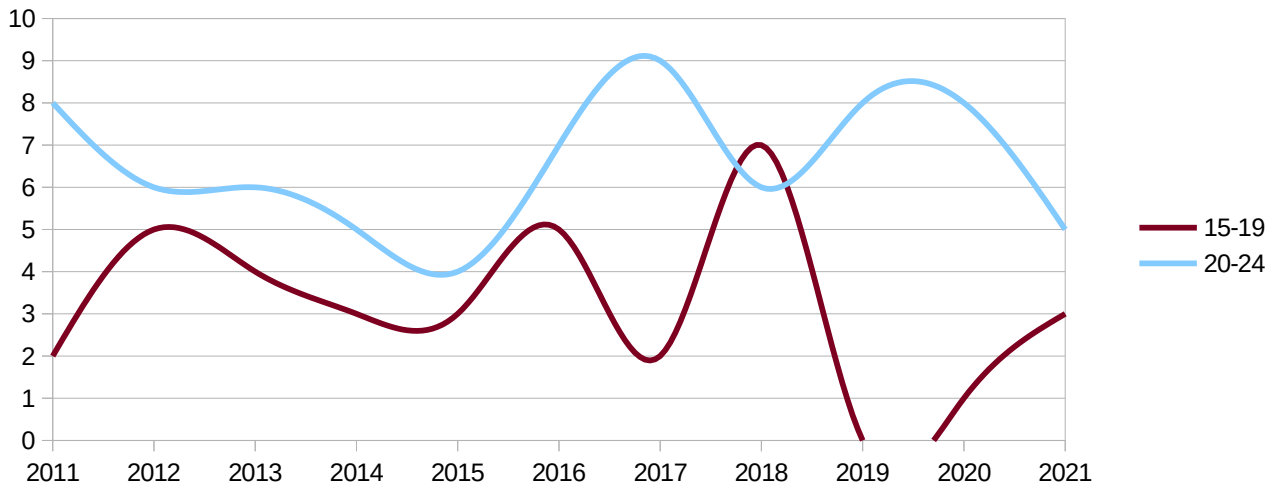
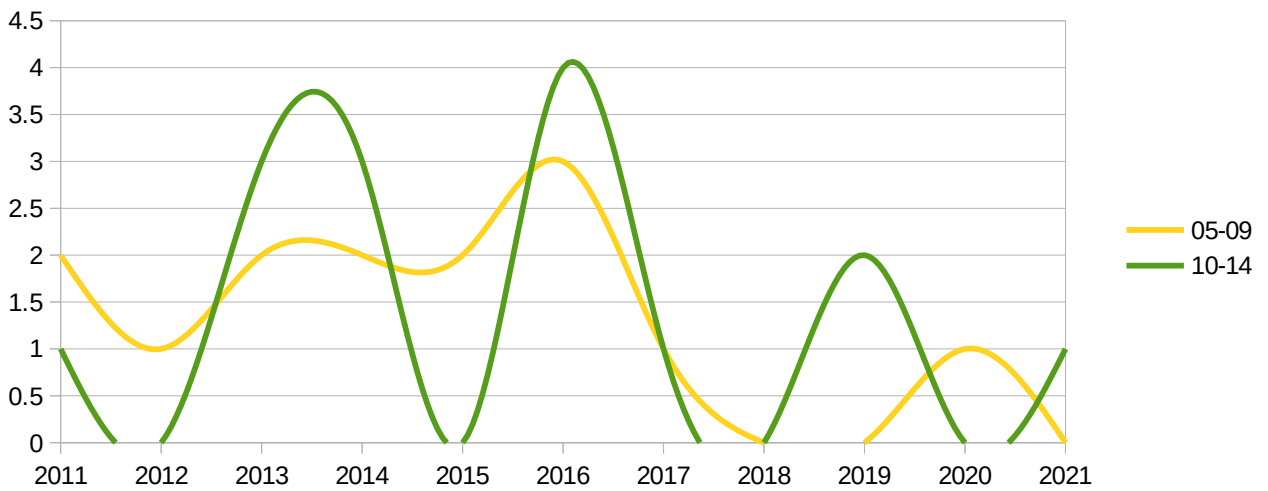
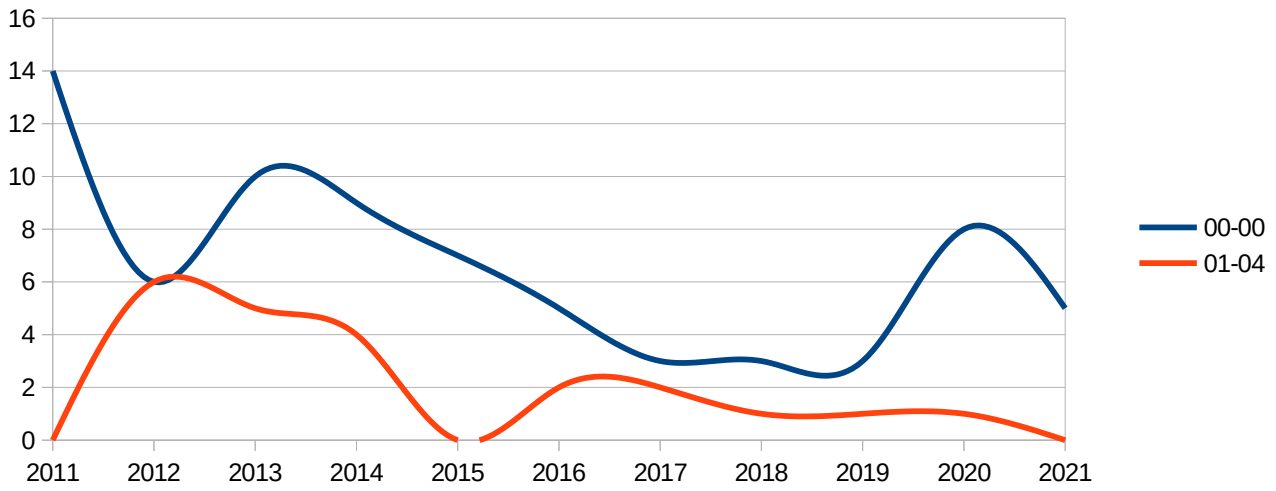
Regione - all -
 Provincia udine
 mese - multiple -

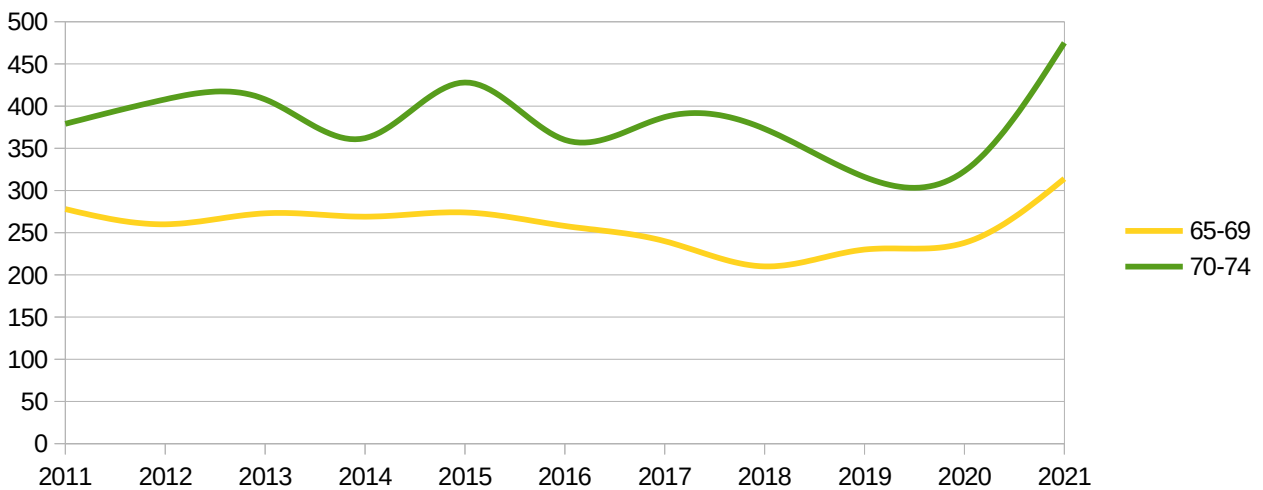
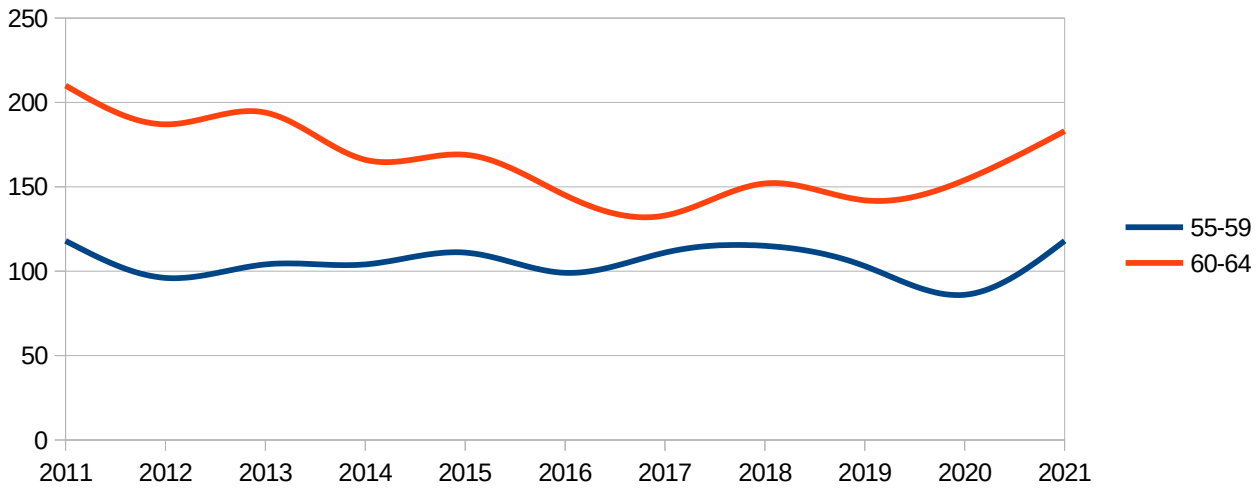
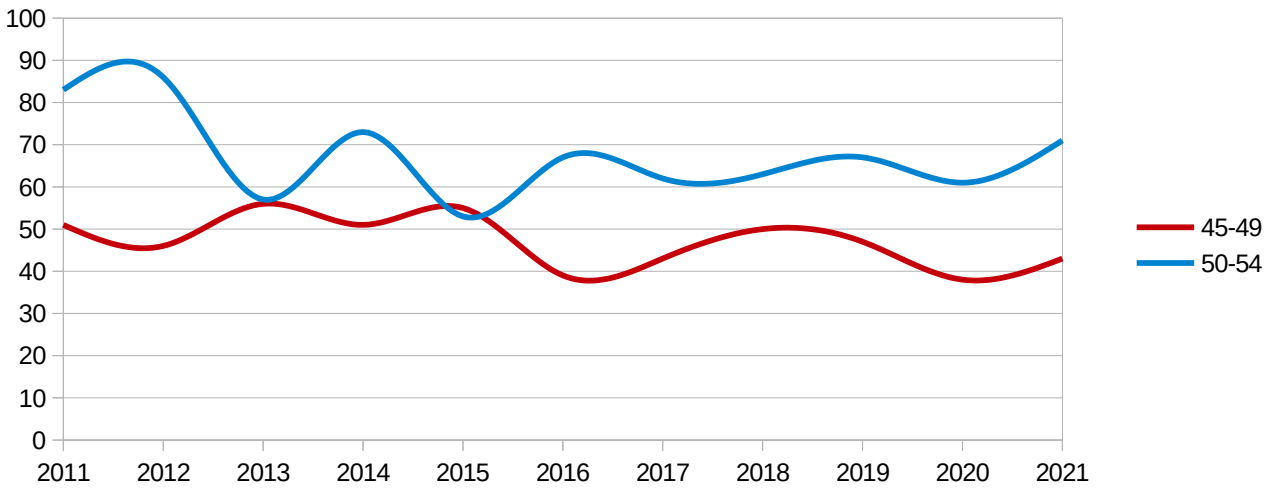
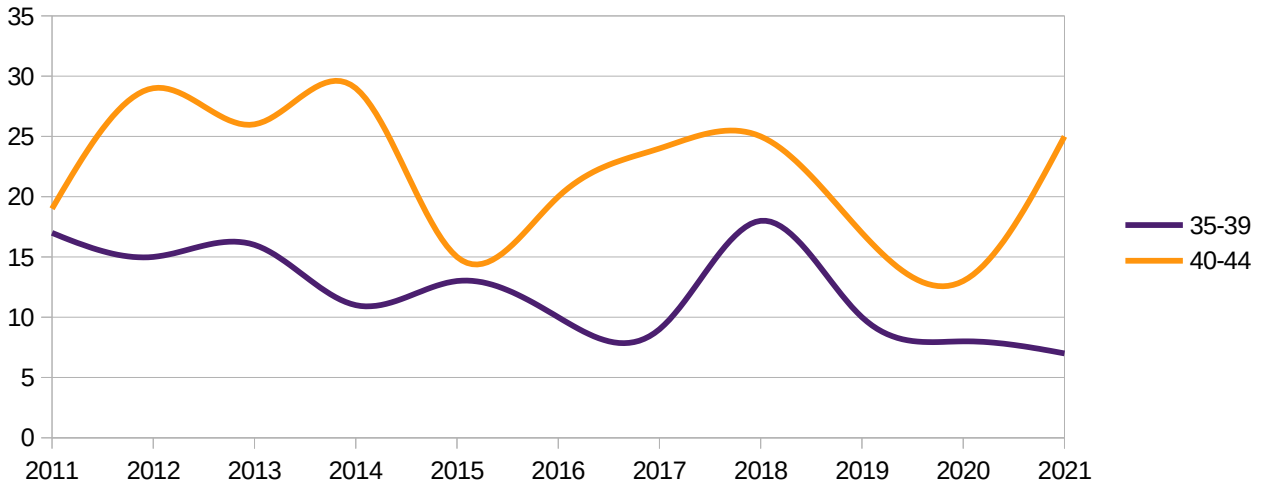
mesi gennaio → agosto
 Dati ISTAT al 31 agosto 2021

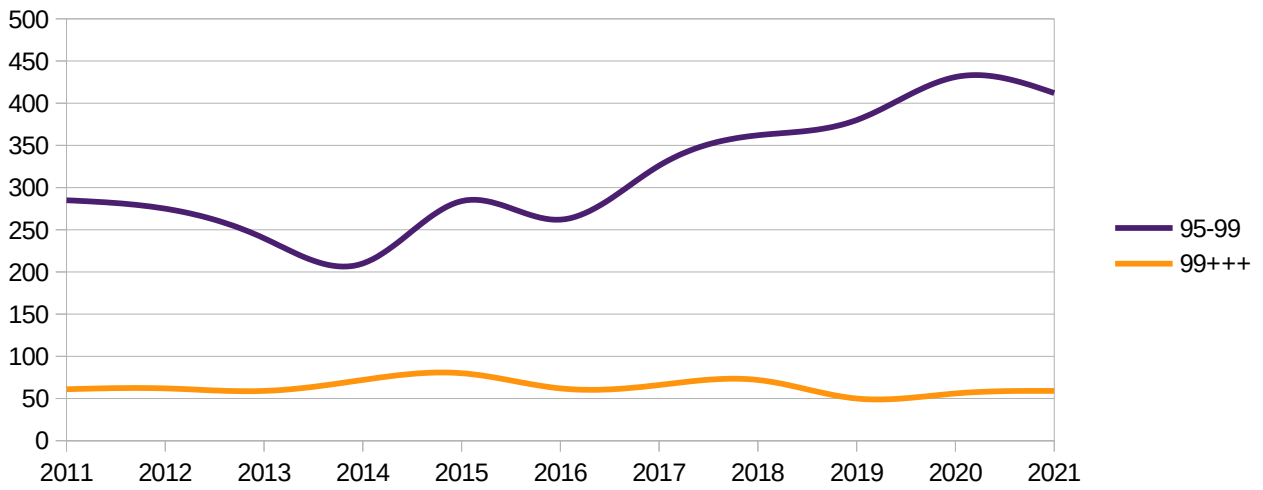
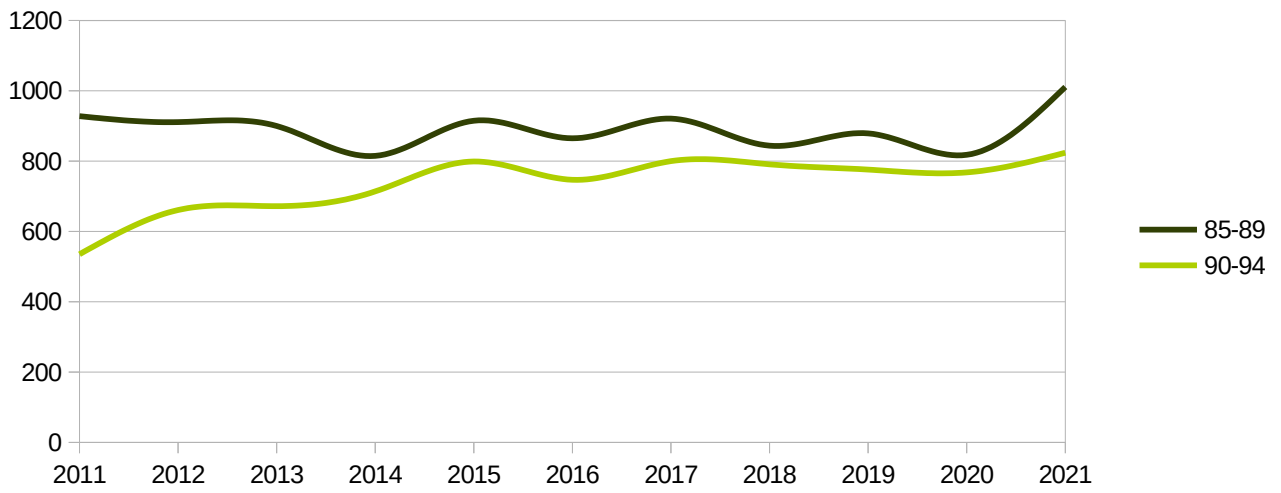
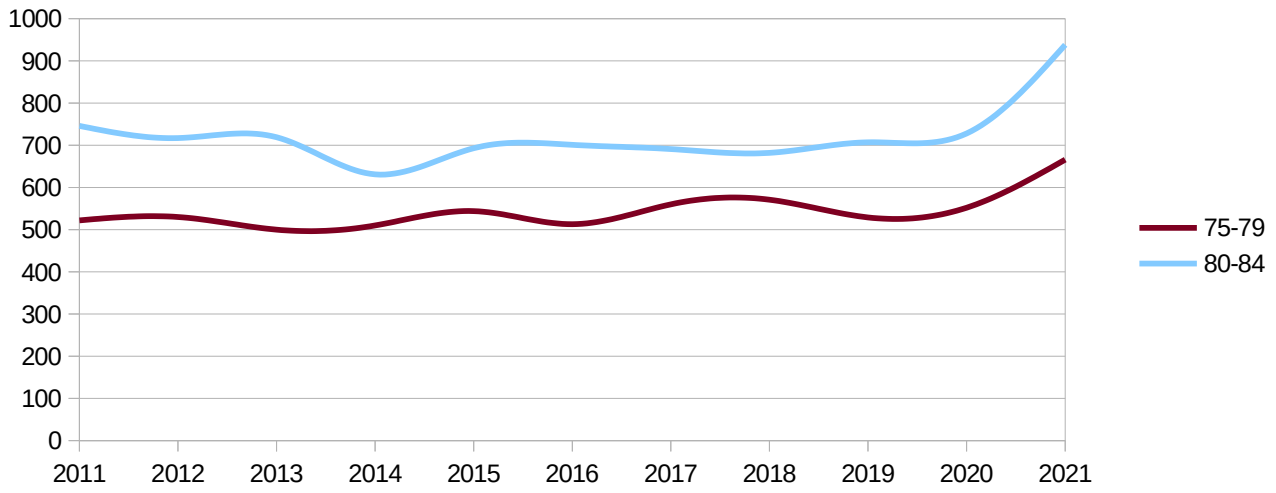
Decessi per fascia d'età

eta	2011	2012	2013	2014	2015	2016	2017	2018	2019	2020	2021	
00-00	14	6	10	9	7	5	3	3	3	3	8	5
01-04	0	6	5	4	0	2	2	1	1	1	1	0
05-09	2	1	2	2	2	3	1	0	0	0	1	0
10-14	1	0	3	3	0	4	1	0	2	0	0	1
15-19	2	5	4	3	3	5	2	7	0	1	3	3
20-24	8	6	6	5	4	7	9	6	8	8	8	5
25-29	7	5	8	4	6	2	7	4	4	5	6	6
30-34	14	8	16	6	13	6	9	7	3	6	9	9
35-39	17	15	16	11	13	10	9	18	10	8	7	7
40-44	19	29	26	29	15	20	24	25	17	13	25	25
45-49	51	46	56	51	55	39	43	50	47	38	43	43
50-54	83	86	57	73	53	67	62	63	67	61	71	71
55-59	118	96	104	104	111	99	111	115	103	86	118	118
60-64	210	187	194	166	169	145	133	152	142	154	183	183
65-69	278	260	273	269	274	258	240	210	230	238	314	314
70-74	379	408	408	362	428	360	387	373	316	323	475	475
75-79	522	530	500	510	544	513	560	571	529	552	666	666
80-84	746	717	719	631	693	701	691	682	707	728	938	938
85-89	928	911	900	815	915	865	921	844	879	818	1011	1011
90-94	535	661	672	714	799	747	800	791	776	768	824	824
95-99	285	275	240	210	284	262	326	362	380	431	412	412
99+++	61	62	59	72	80	62	66	72	50	56	59	59









Regione - all -
 Provincia udine
 mese - multiple -

mesi gennaio → agosto
 Dati ISTAT al 31 agosto 2021

Confronto MIN(2011-2019), 2020, 2021, MAX(2011-2019)

eta	MIN	2020	2021	MAX
00-00	3	8	5	14
01-04	0	1	0	6
05-09	0	1	0	3
10-14	0	0	1	4
15-19	0	1	3	7
20-24	4	8	5	9
25-29	2	5	6	8
30-34	3	6	9	16
35-39	9	8	7	18
40-44	15	13	25	29
45-49	39	38	43	56
50-54	53	61	71	86
55-59	96	86	118	118
60-64	133	154	183	210
65-69	210	238	314	278
70-74	316	323	475	428
75-79	500	552	666	571
80-84	631	728	938	746
85-89	815	818	1011	928
90-94	535	768	824	800
95-99	210	431	412	380
99+++	50	56	59	80

