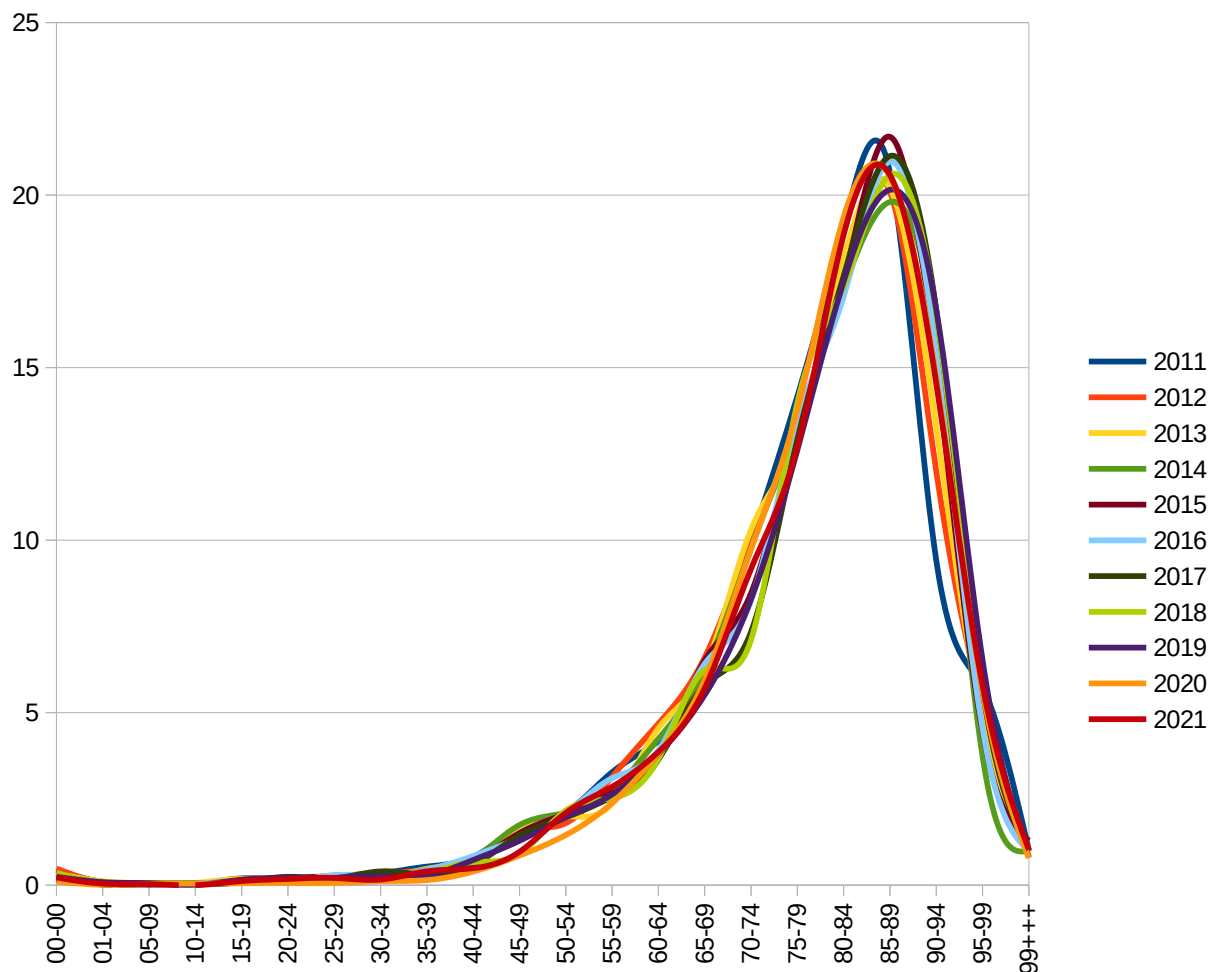


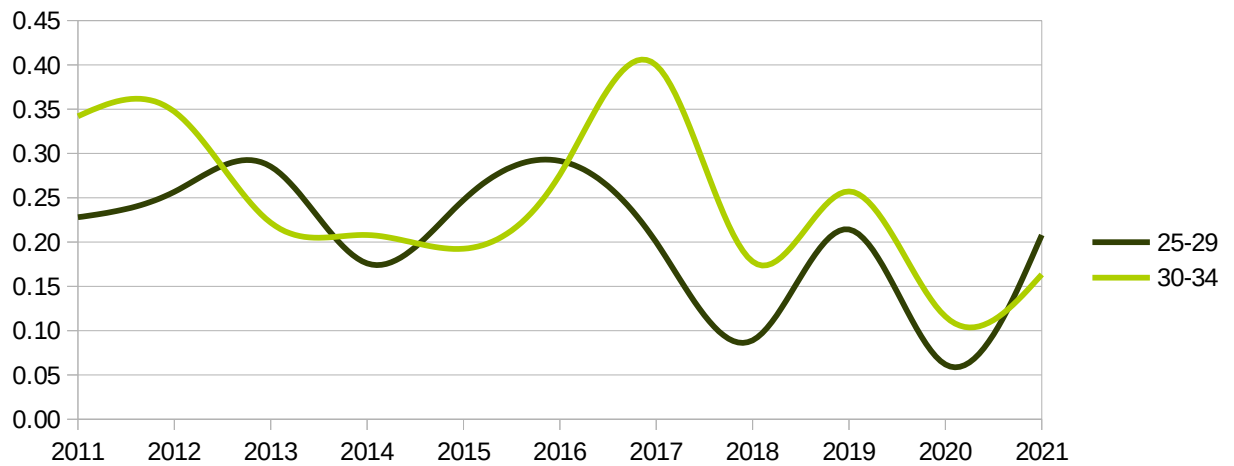
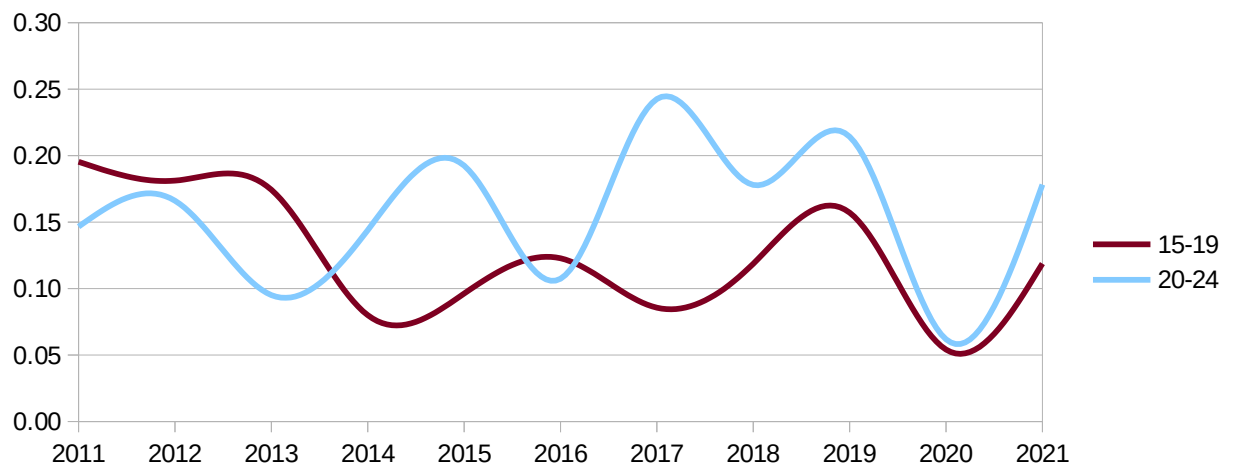
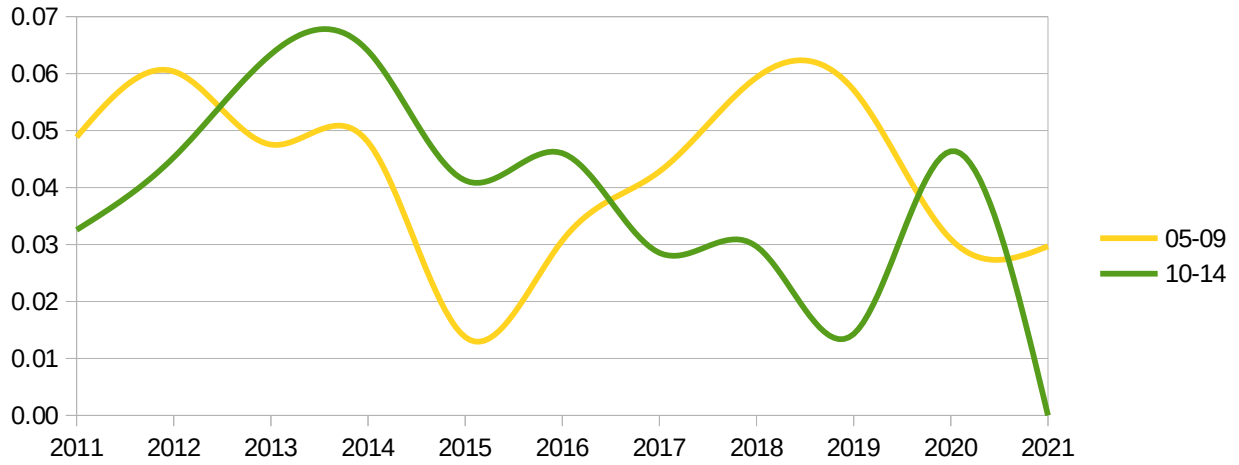
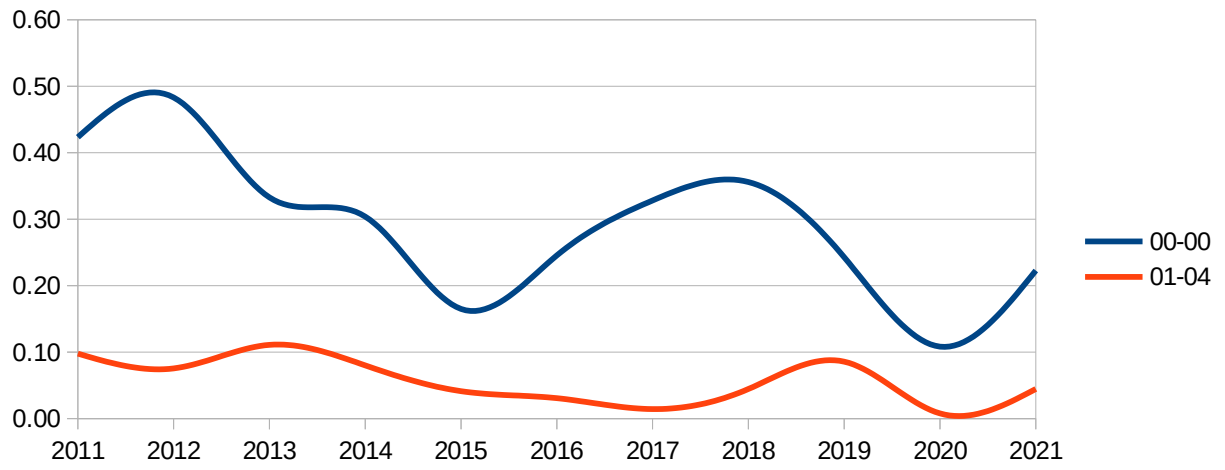
Regione - all -  
 Provincia bergamo  
 mese - multiple -

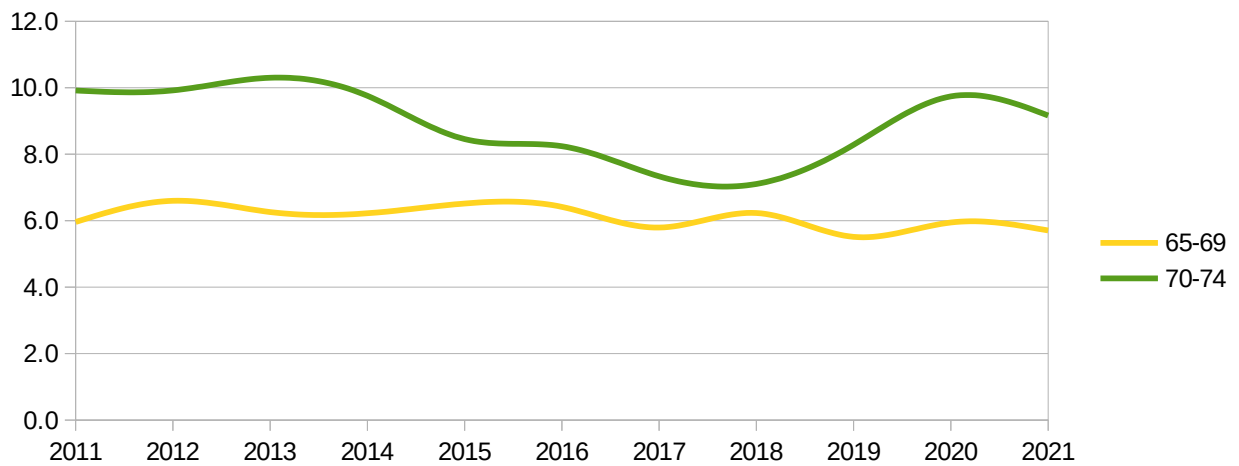
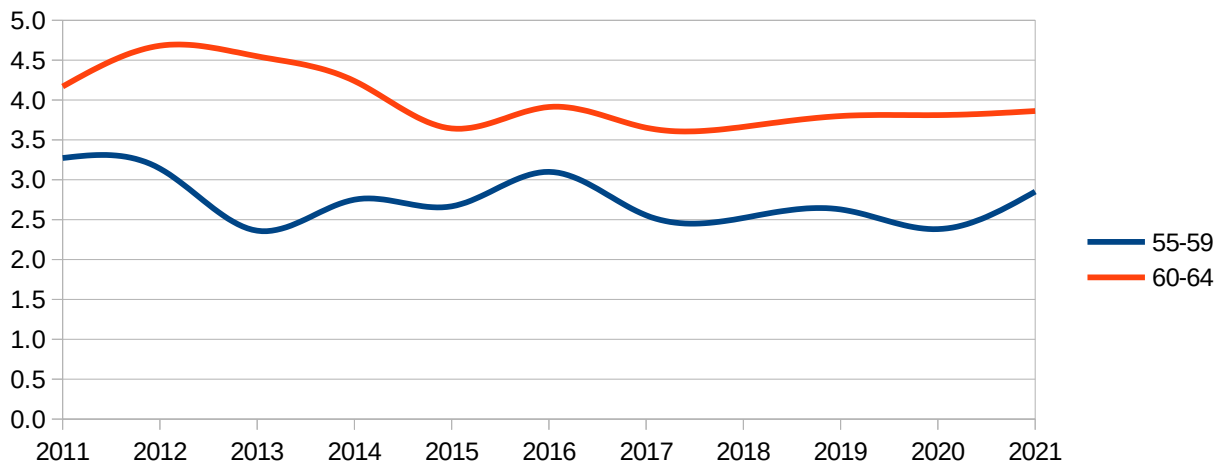
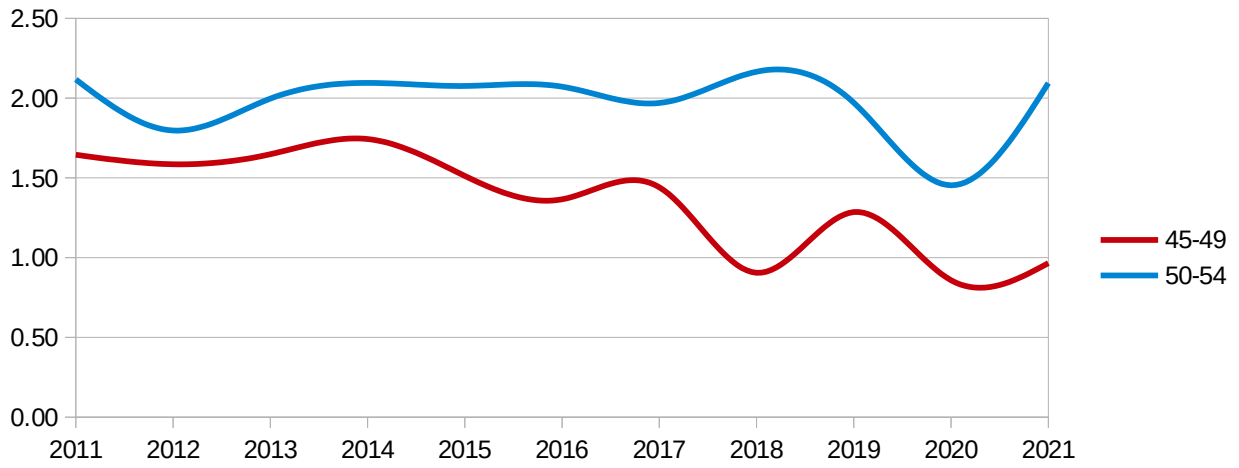
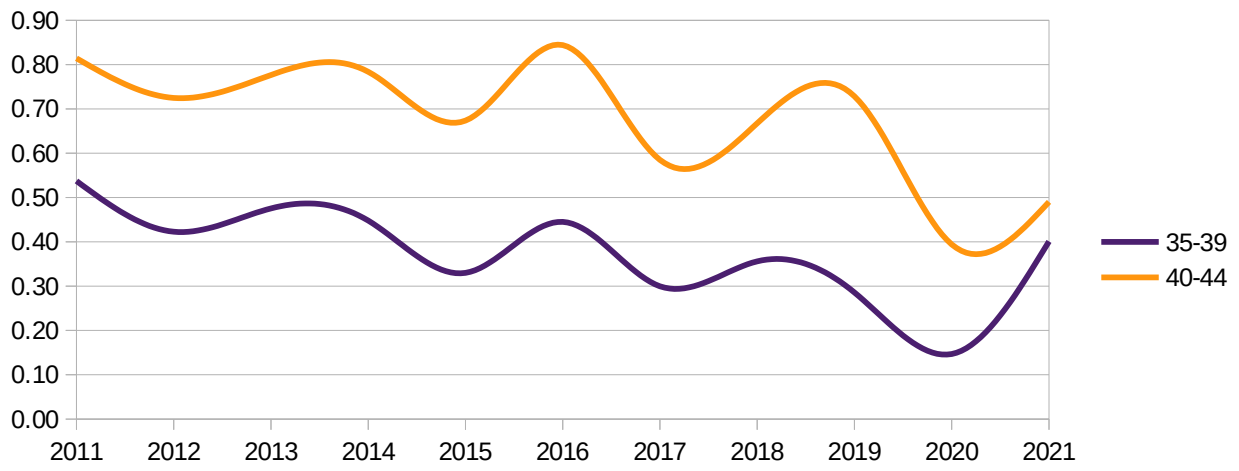
mesi gennaio → agosto  
 Dati ISTAT al 31 agosto 2021

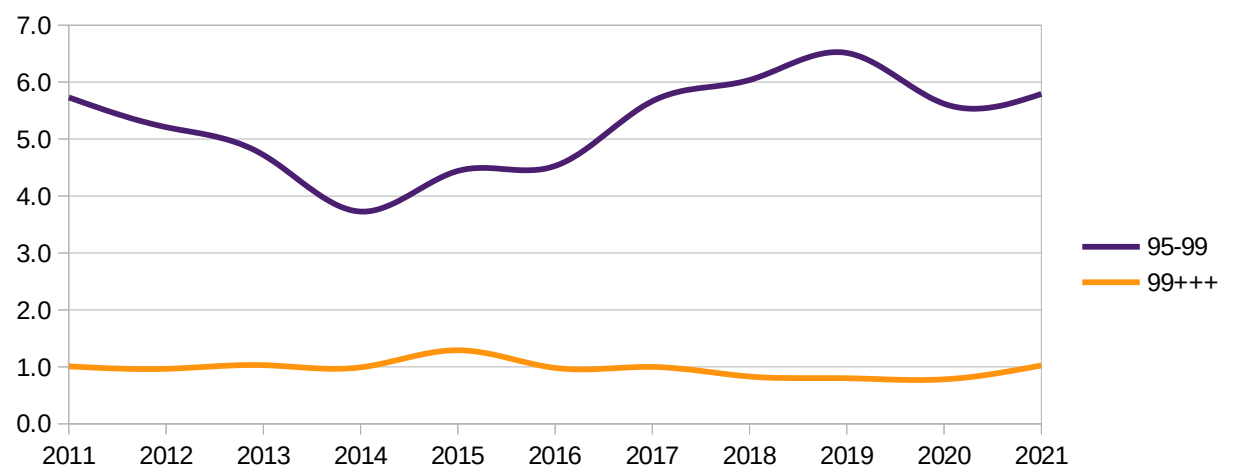
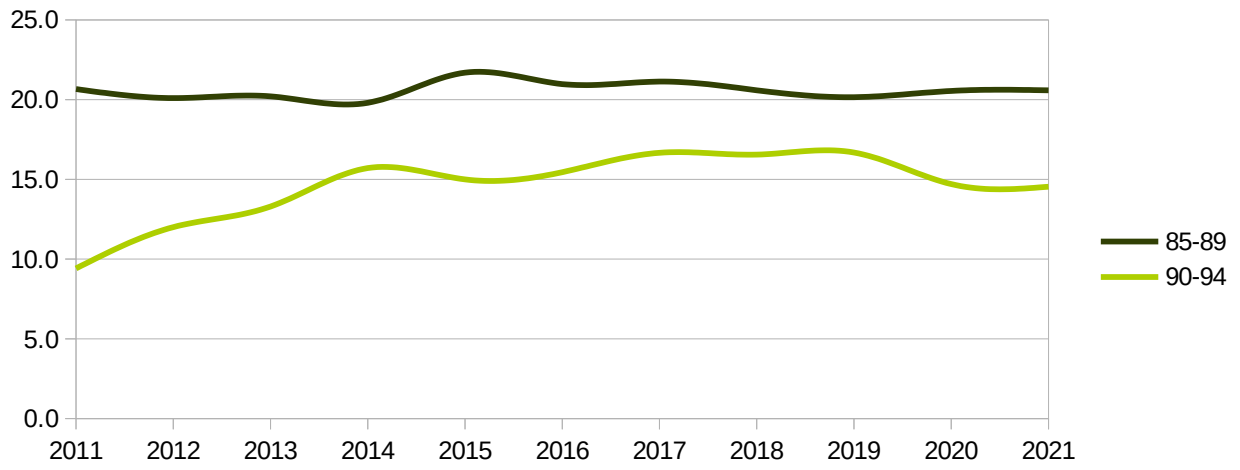
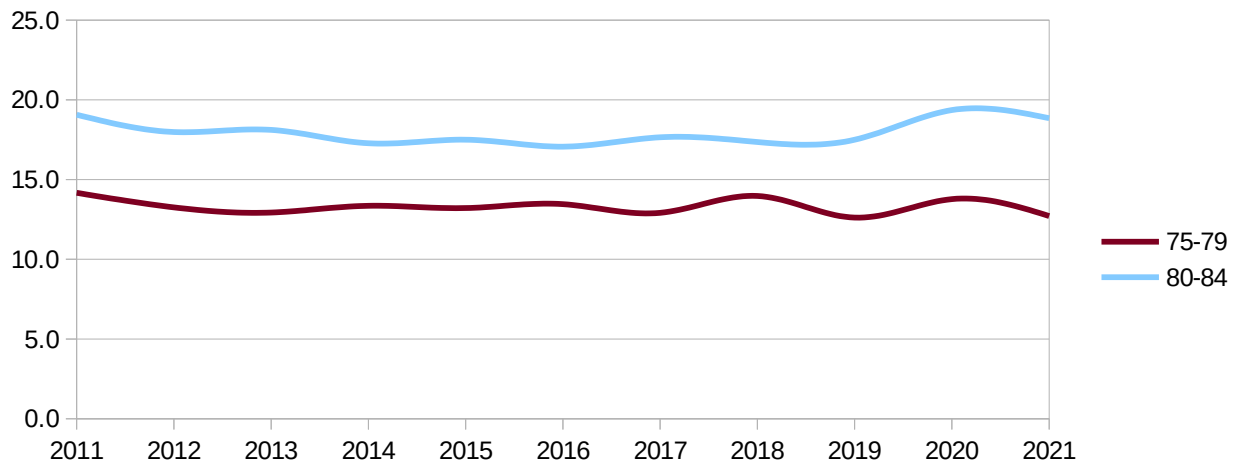
## Distribuzione decessi per fascia d'età

eta	2011	2012	2013	2014	2015	2016	2017	2018	2019	2020	2021
00-00	0.42	0.48	0.33	0.30	0.16	0.25	0.33	0.36	0.24	0.11	0.22
01-04	0.10	0.08	0.11	0.08	0.04	0.03	0.01	0.04	0.09	0.01	0.04
05-09	0.05	0.06	0.05	0.05	0.01	0.03	0.04	0.06	0.06	0.03	0.03
10-14	0.03	0.05	0.06	0.06	0.04	0.05	0.03	0.03	0.01	0.05	0.00
15-19	0.20	0.18	0.17	0.08	0.10	0.12	0.09	0.12	0.16	0.05	0.12
20-24	0.15	0.17	0.10	0.14	0.19	0.11	0.24	0.18	0.21	0.06	0.18
25-29	0.23	0.26	0.29	0.18	0.25	0.29	0.20	0.09	0.21	0.06	0.21
30-34	0.34	0.35	0.22	0.21	0.19	0.28	0.40	0.18	0.26	0.12	0.16
35-39	0.54	0.42	0.48	0.45	0.33	0.44	0.30	0.36	0.29	0.15	0.40
40-44	0.81	0.72	0.78	0.78	0.67	0.84	0.59	0.67	0.73	0.39	0.49
45-49	1.64	1.59	1.65	1.74	1.51	1.37	1.44	0.90	1.29	0.86	0.97
50-54	2.12	1.80	2.00	2.10	2.08	2.07	1.97	2.17	1.97	1.45	2.09
55-59	3.27	3.14	2.36	2.75	2.67	3.10	2.55	2.52	2.63	2.38	2.85
60-64	4.17	4.68	4.55	4.24	3.64	3.91	3.65	3.66	3.80	3.81	3.86
65-69	5.96	6.60	6.26	6.22	6.52	6.41	5.79	6.23	5.51	5.94	5.70
70-74	9.92	9.92	10.30	9.76	8.45	8.24	7.33	7.10	8.28	9.74	9.16
75-79	14.17	13.26	12.93	13.36	13.21	13.46	12.91	13.97	12.61	13.78	12.71
80-84	19.07	17.98	18.11	17.27	17.50	17.06	17.65	17.35	17.50	19.36	18.85
85-89	20.66	20.10	20.21	19.80	21.69	20.98	21.13	20.59	20.15	20.55	20.59
90-94	9.41	12.00	13.30	15.71	15.00	15.45	16.67	16.55	16.68	14.70	14.54
95-99	5.73	5.21	4.72	3.73	4.44	4.53	5.66	6.04	6.51	5.62	5.79
99+++	1.01	0.97	1.03	0.99	1.29	0.98	1.00	0.83	0.80	0.78	1.02







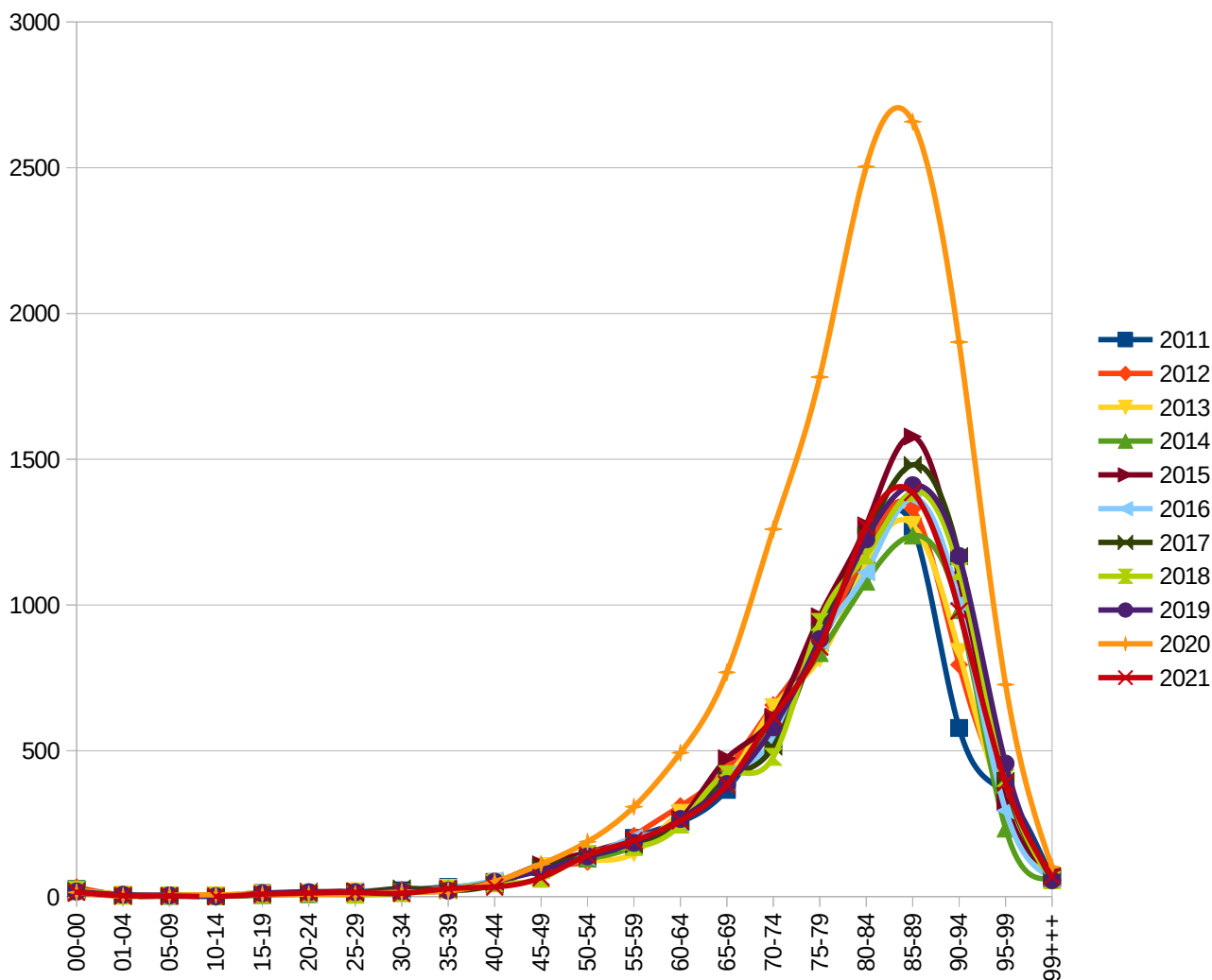


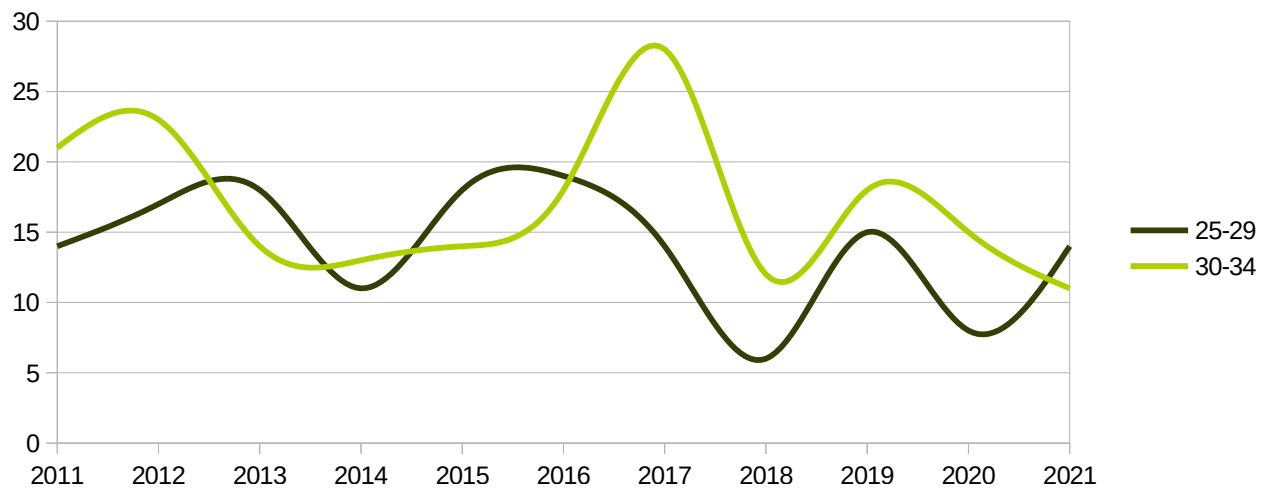
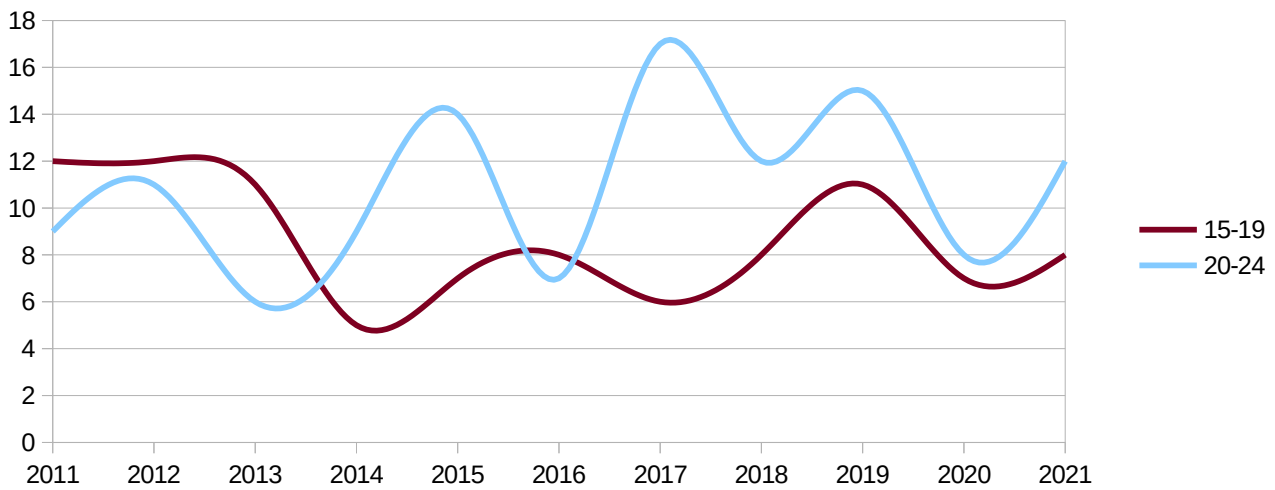
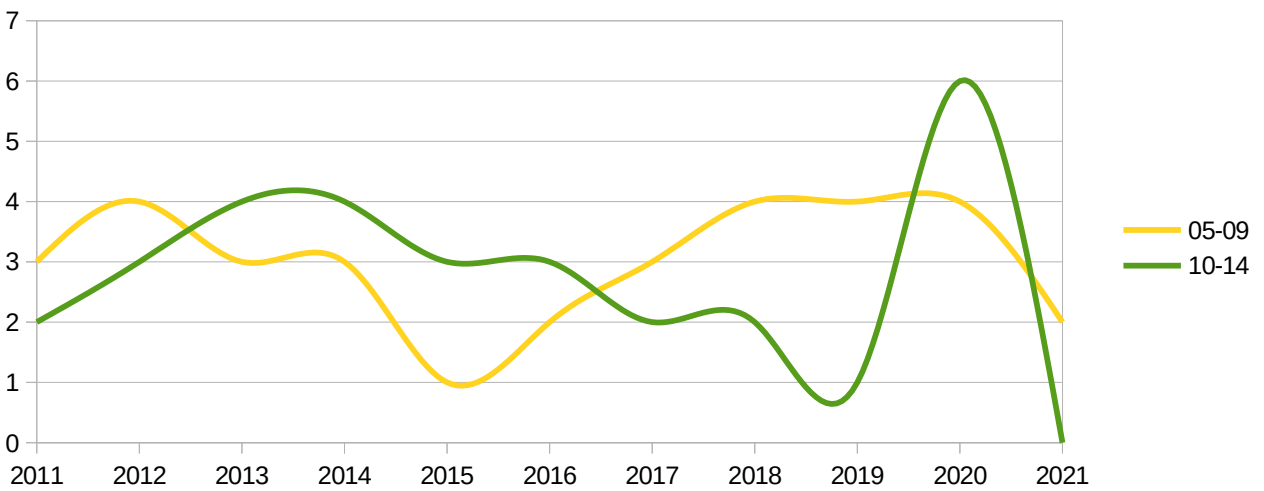
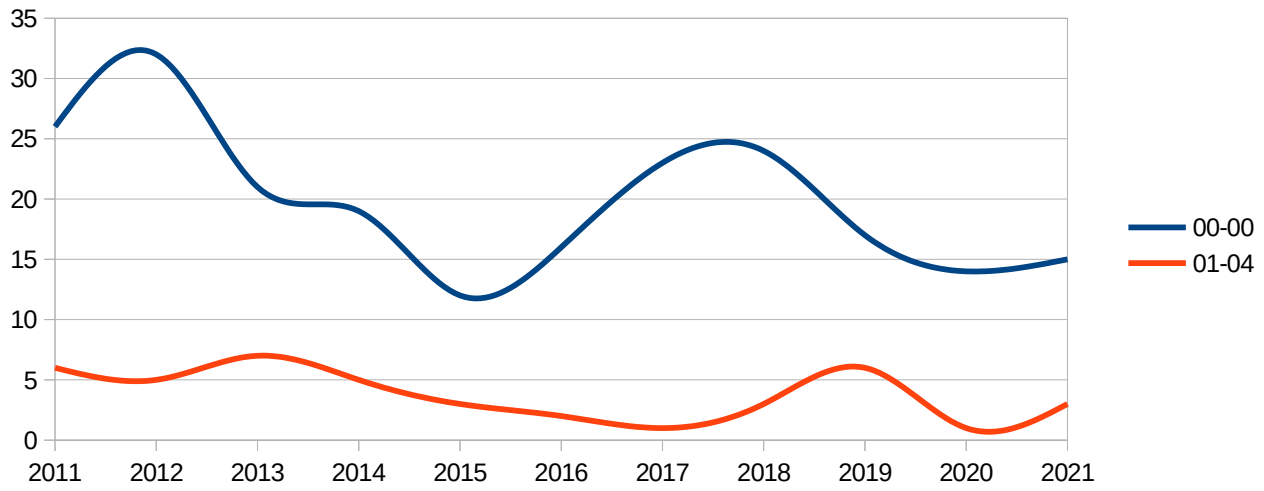
Regione - all -  
 Provincia bergamo  
 mese - multiple -

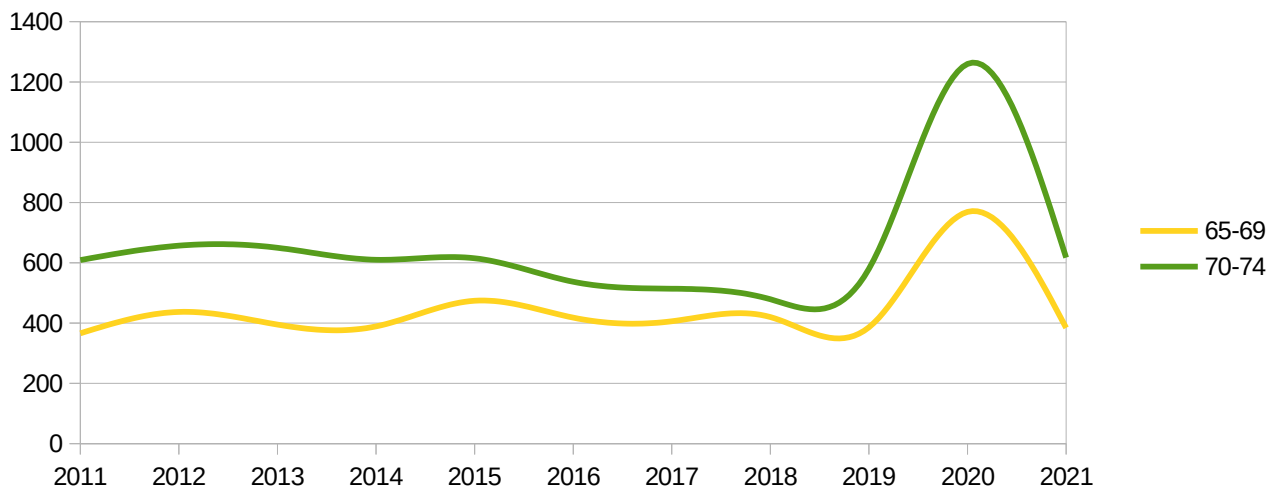
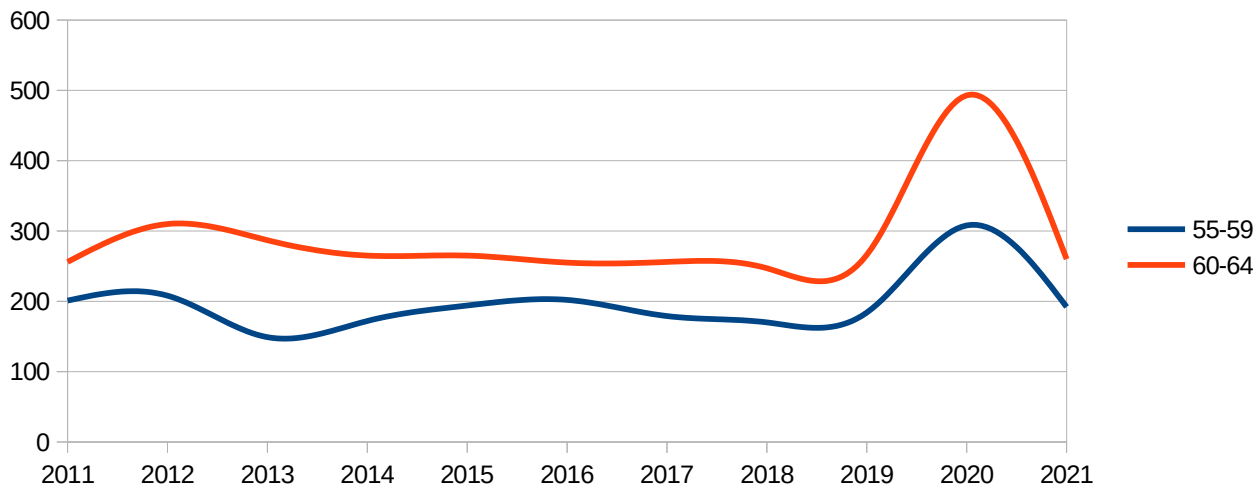
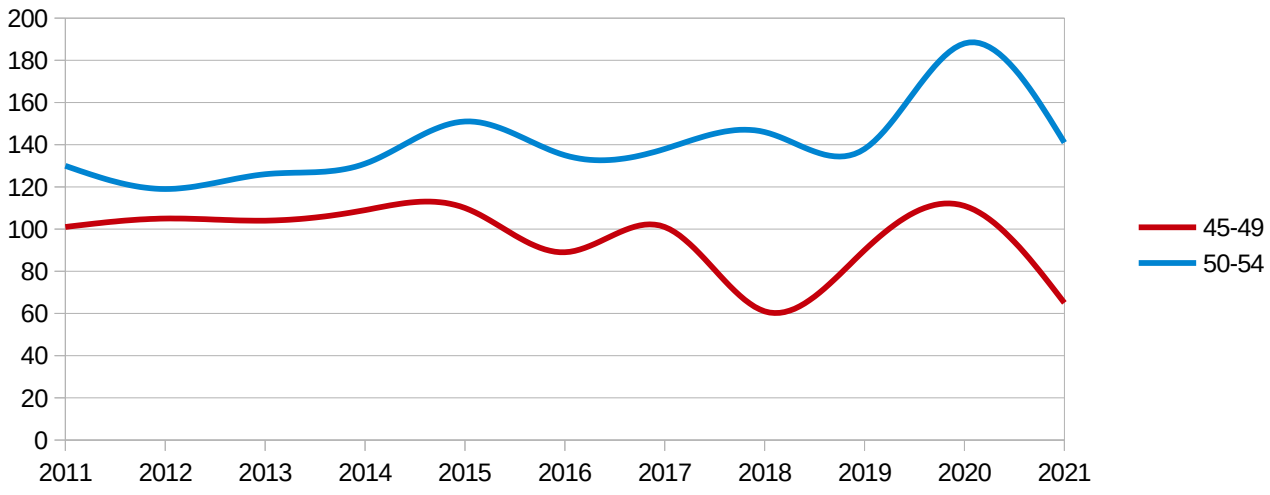
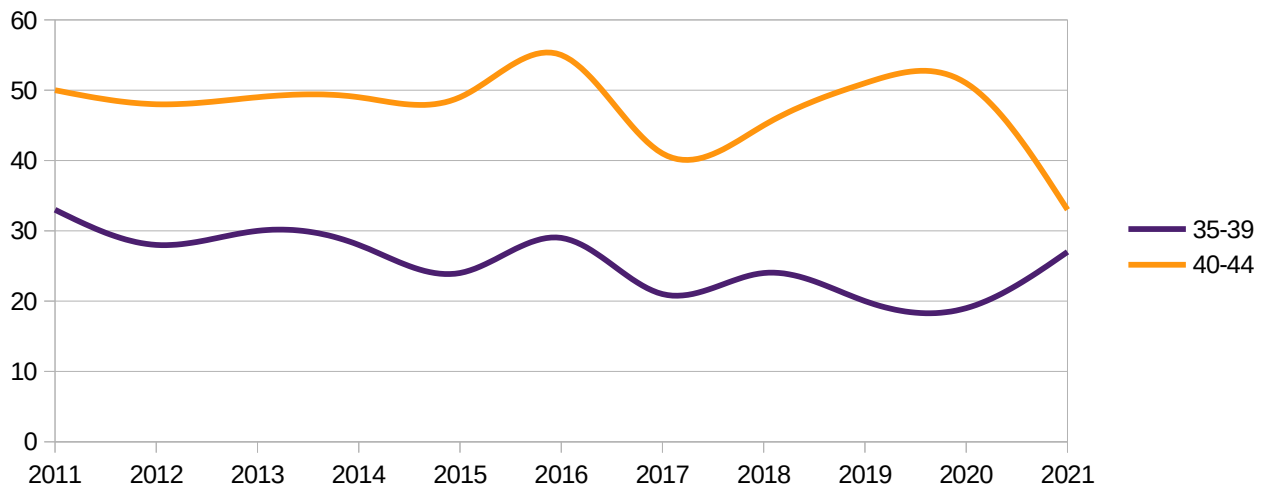
mesi gennaio → agosto  
 Dati ISTAT al 31 agosto 2021

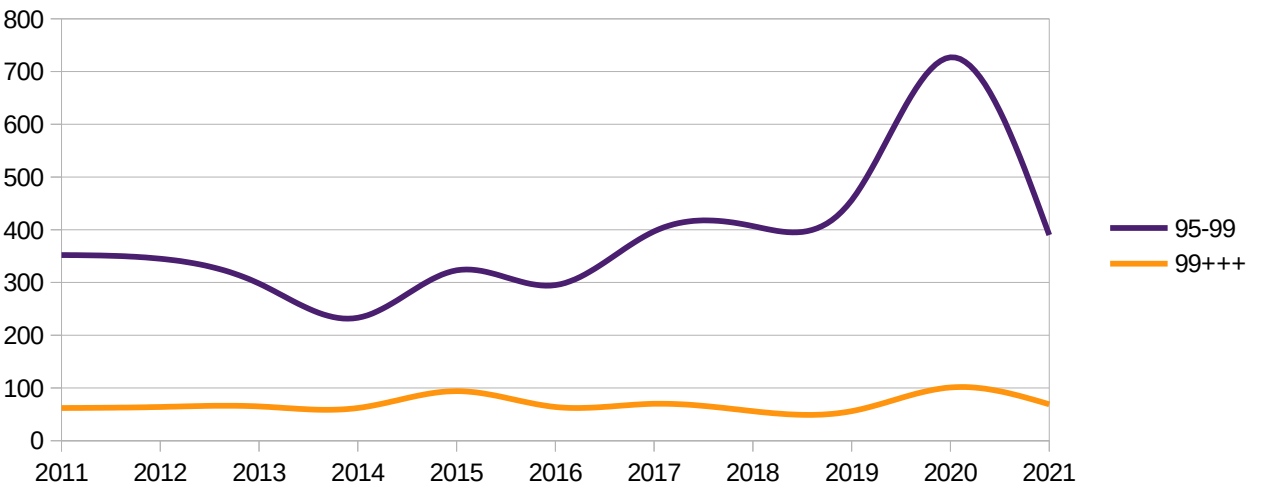
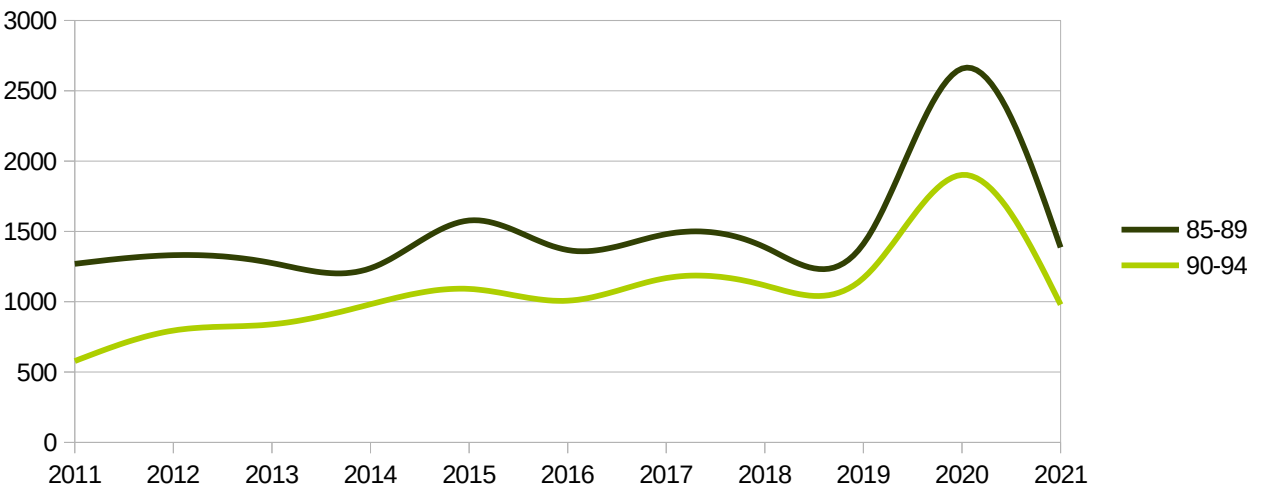
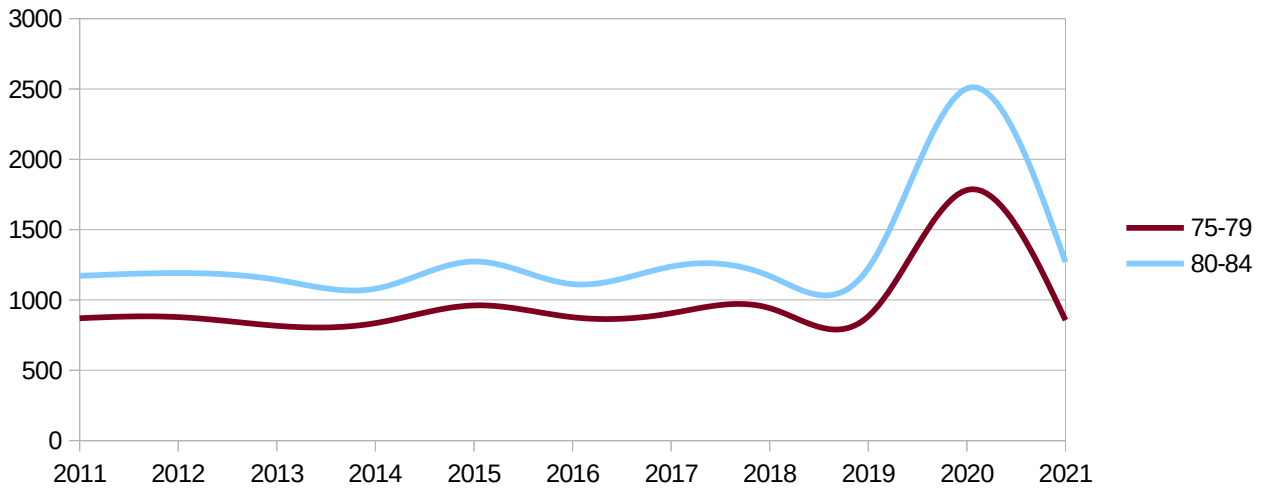
## Decessi per fascia d'età

eta	2011	2012	2013	2014	2015	2016	2017	2018	2019	2020	2021
00-00	26	32	21	19	12	16	23	24	17	14	15
01-04	6	5	7	5	3	2	1	3	6	1	3
05-09	3	4	3	3	1	2	3	4	4	4	2
10-14	2	3	4	4	3	3	2	2	1	6	0
15-19	12	12	11	5	7	8	6	8	11	7	8
20-24	9	11	6	9	14	7	17	12	15	8	12
25-29	14	17	18	11	18	19	14	6	15	8	14
30-34	21	23	14	13	14	18	28	12	18	15	11
35-39	33	28	30	28	24	29	21	24	20	19	27
40-44	50	48	49	49	49	55	41	45	51	51	33
45-49	101	105	104	109	110	89	101	61	90	111	65
50-54	130	119	126	131	151	135	138	146	138	188	141
55-59	201	208	149	172	194	202	179	170	184	308	192
60-64	256	310	287	265	265	255	256	247	266	493	260
65-69	366	437	395	389	474	418	406	420	386	769	384
70-74	609	657	650	610	615	537	514	479	580	1260	617
75-79	870	878	816	835	961	877	905	942	883	1782	856
80-84	1171	1191	1143	1080	1273	1112	1237	1170	1225	2504	1269
85-89	1269	1331	1275	1238	1578	1367	1481	1388	1411	2658	1386
90-94	578	795	839	982	1091	1007	1168	1116	1168	1902	979
95-99	352	345	298	233	323	295	397	407	456	727	390
99+++	62	64	65	62	94	64	70	56	56	101	69











Regione - all -  
 Provincia bergamo  
 mese - multiple -

mesi gennaio → agosto  
 Dati ISTAT al 31 agosto 2021

### Confronto MIN(2011-2019), 2020, 2021, MAX(2011-2019)

eta	MIN	2020	2021	MAX
00-00	12	14	15	32
01-04	1	1	3	7
05-09	1	4	2	4
10-14	1	6	0	4
15-19	5	7	8	12
20-24	6	8	12	17
25-29	6	8	14	19
30-34	12	15	11	28
35-39	20	19	27	33
40-44	41	51	33	55
45-49	61	111	65	110
50-54	119	188	141	151
55-59	149	308	192	208
60-64	247	493	260	310
65-69	366	769	384	474
70-74	479	1260	617	657
75-79	816	1782	856	961
80-84	1080	2504	1269	1273
85-89	1238	2658	1386	1578
90-94	578	1902	979	1168
95-99	233	727	390	456
99+++	56	101	69	94

