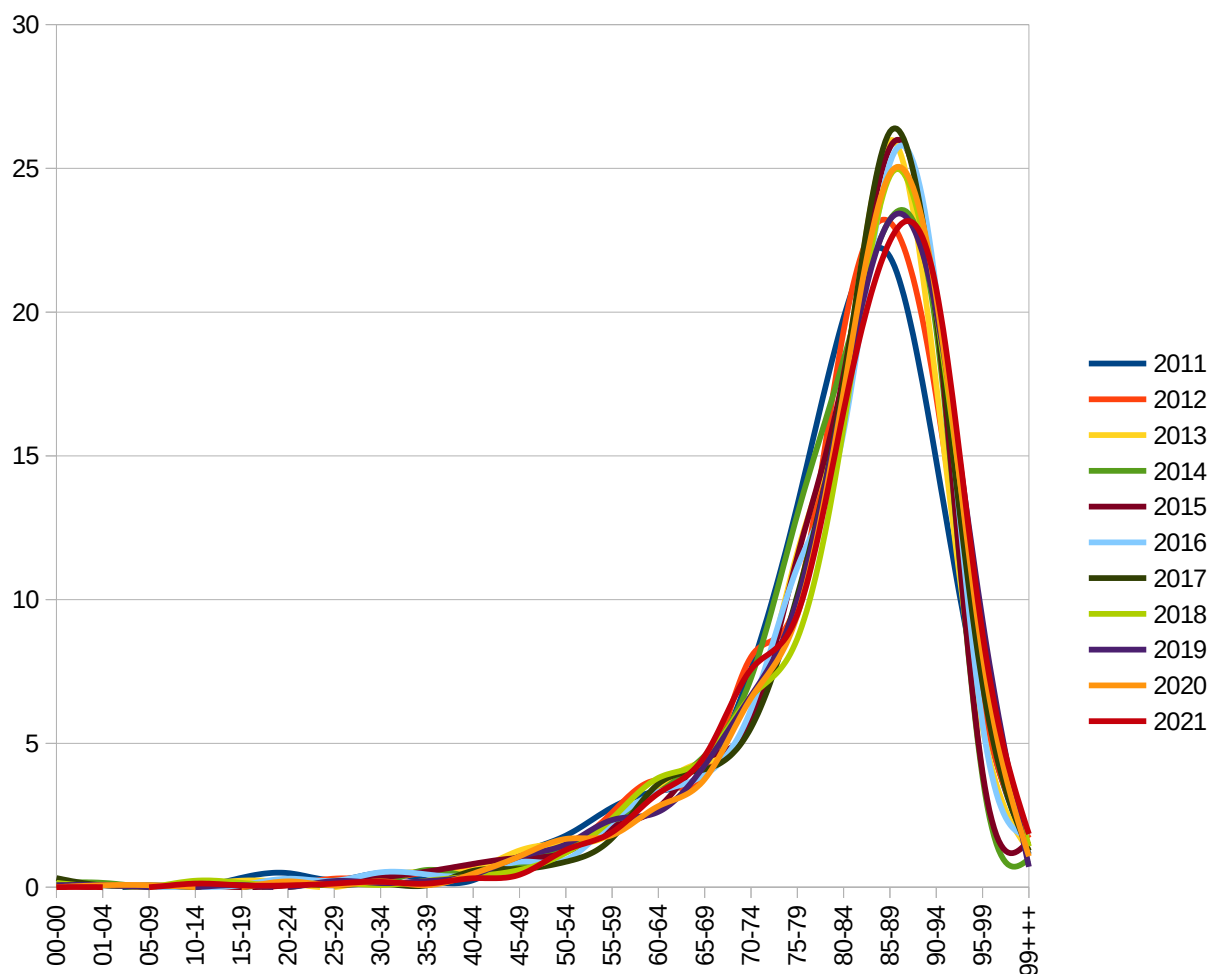


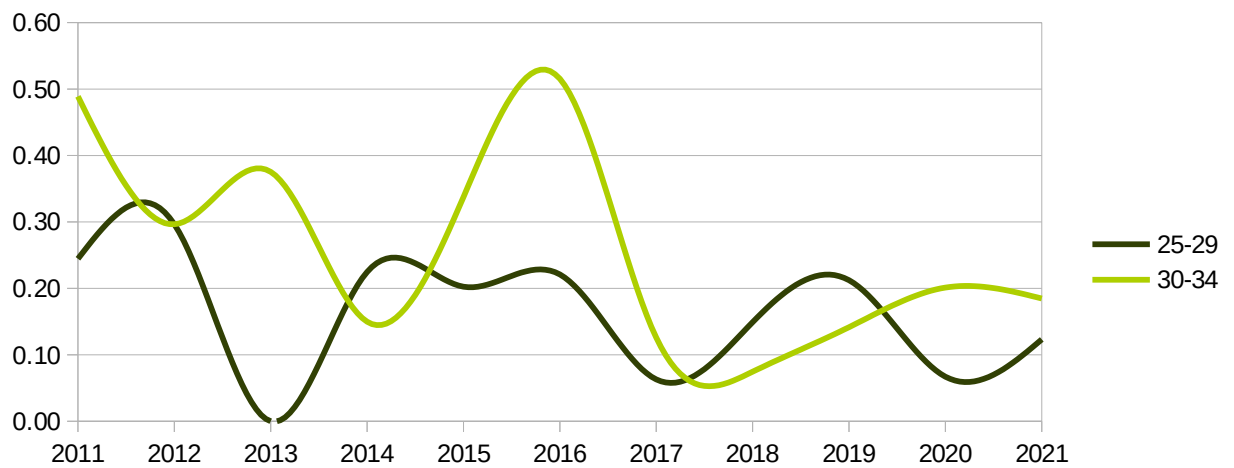
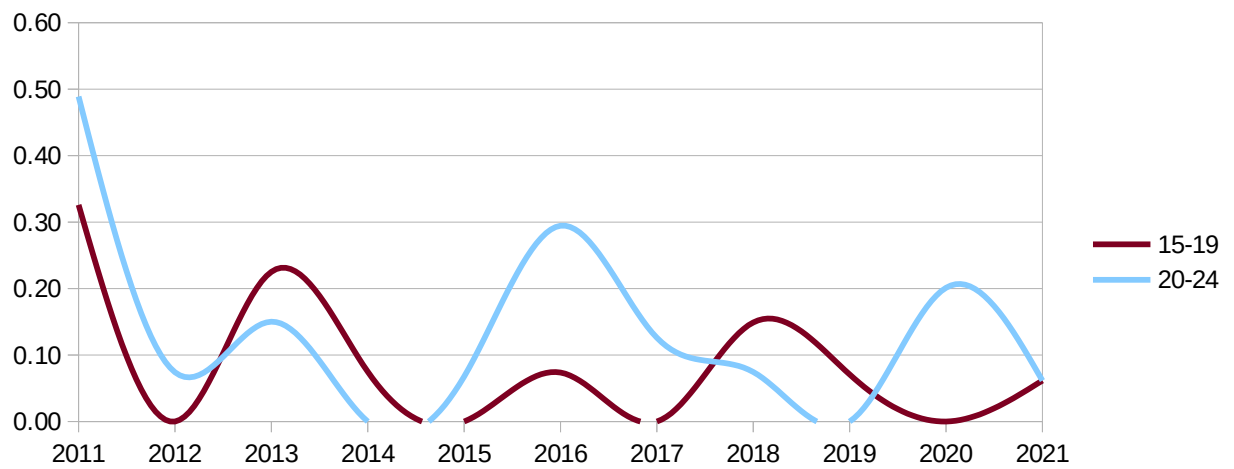
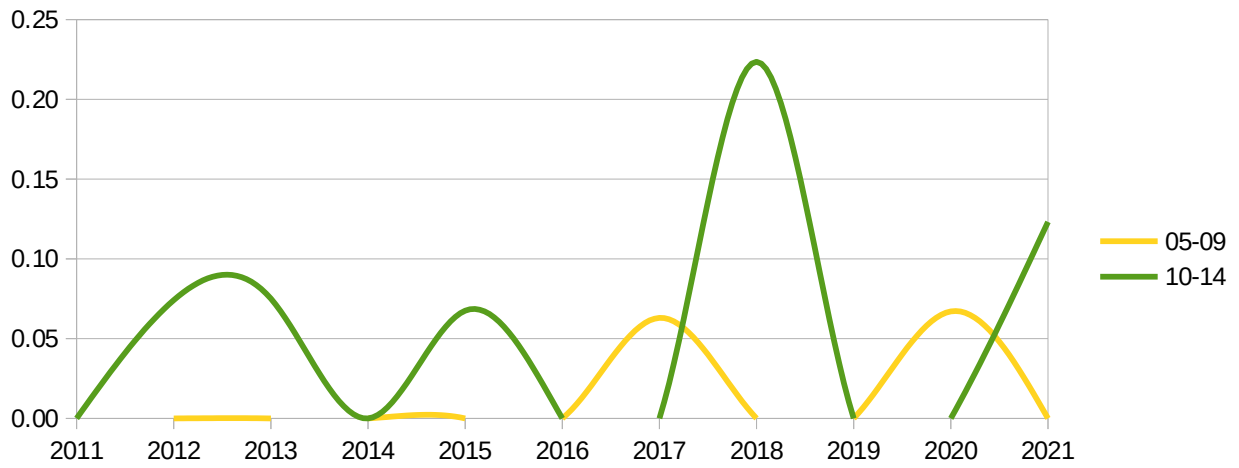
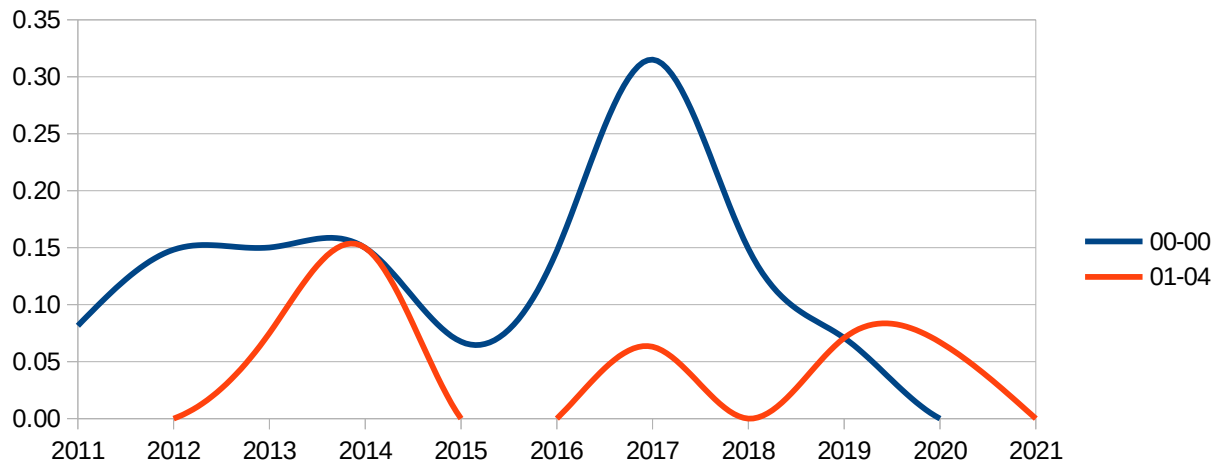
Regione - all -  
 Provincia fermo  
 mese - multiple -

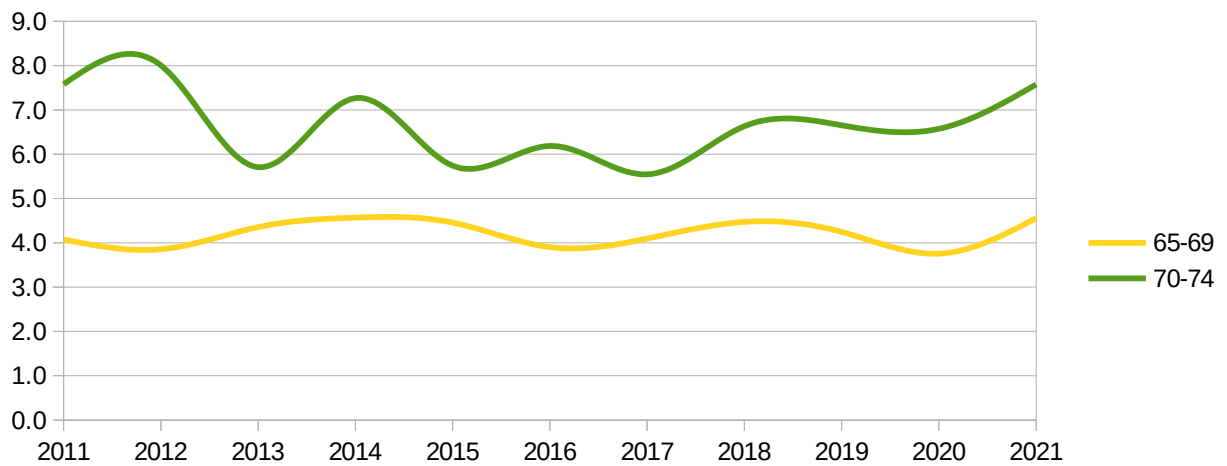
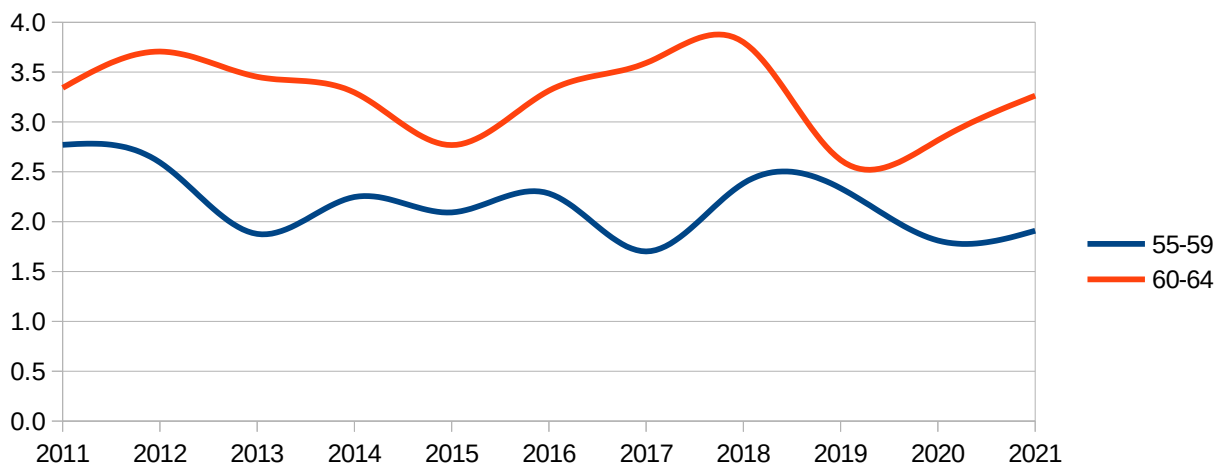
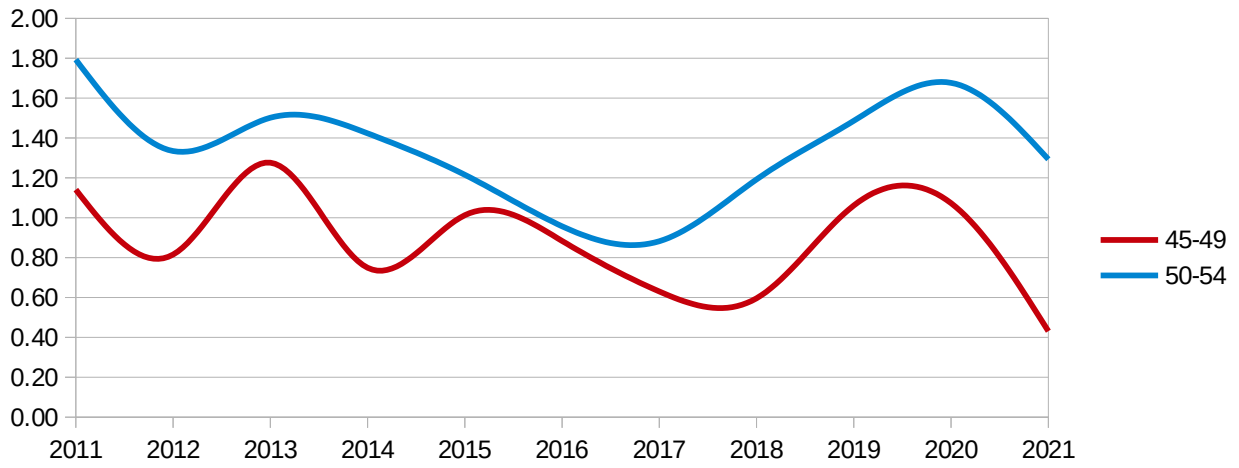
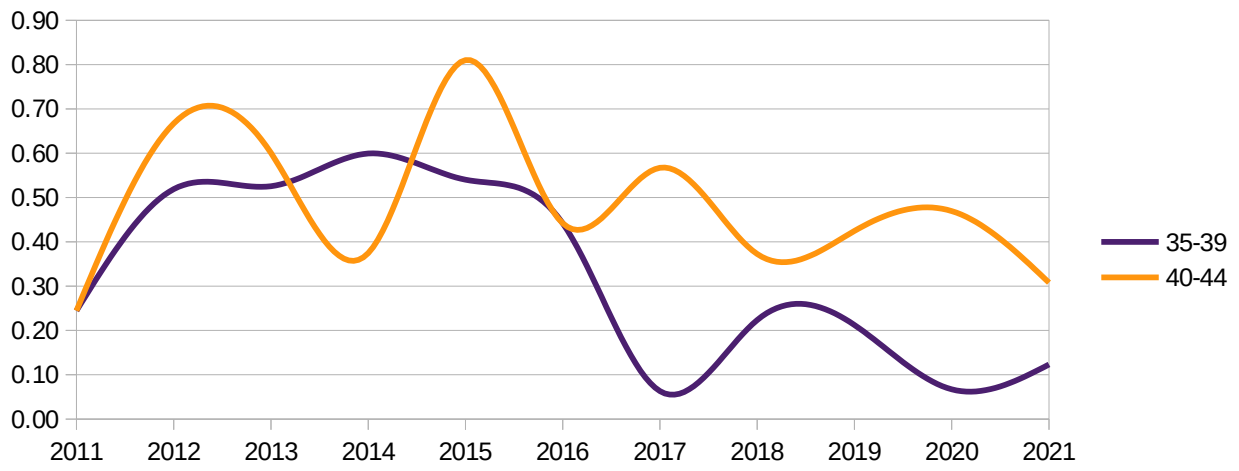
mesi gennaio → agosto  
 Dati ISTAT al 31 agosto 2021

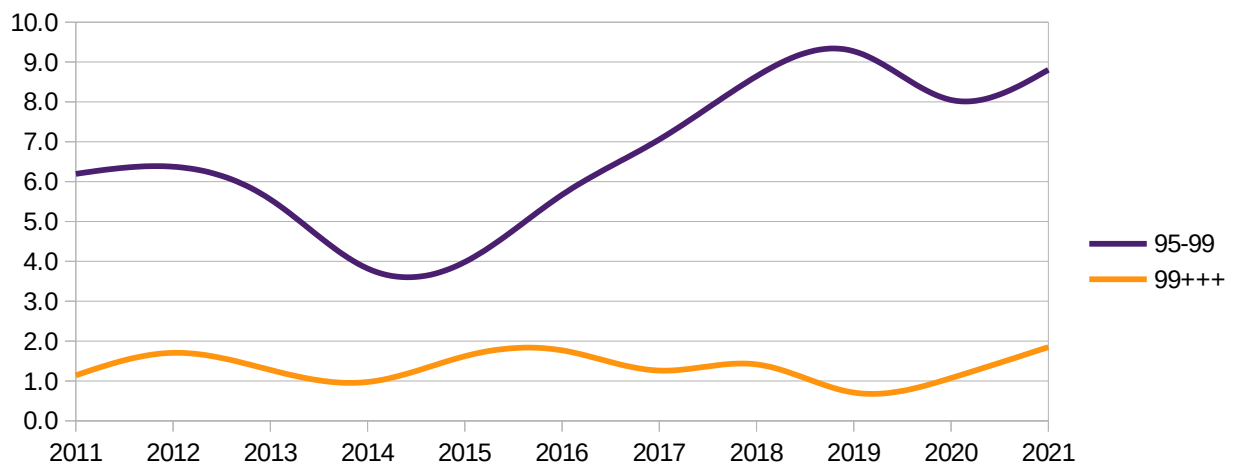
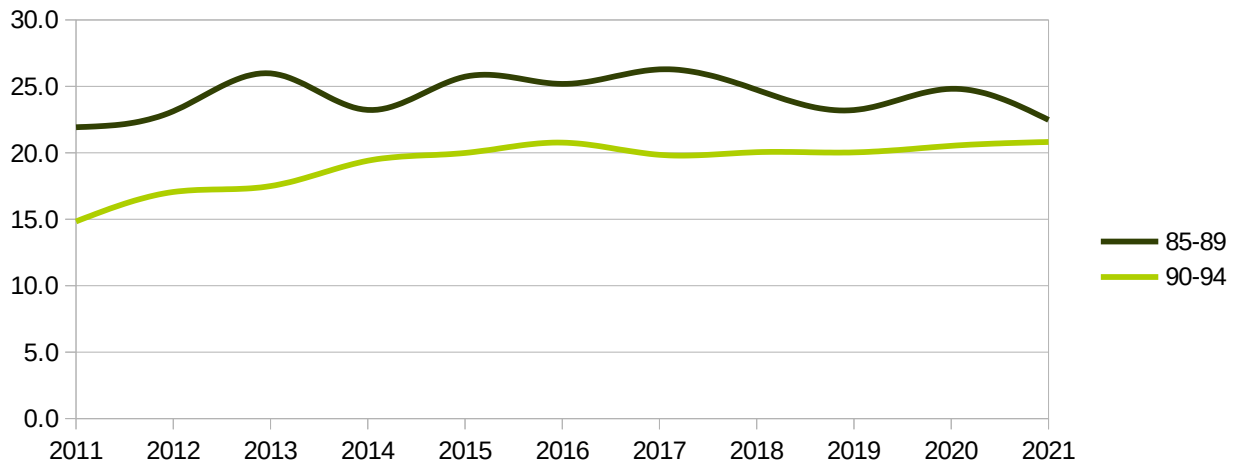
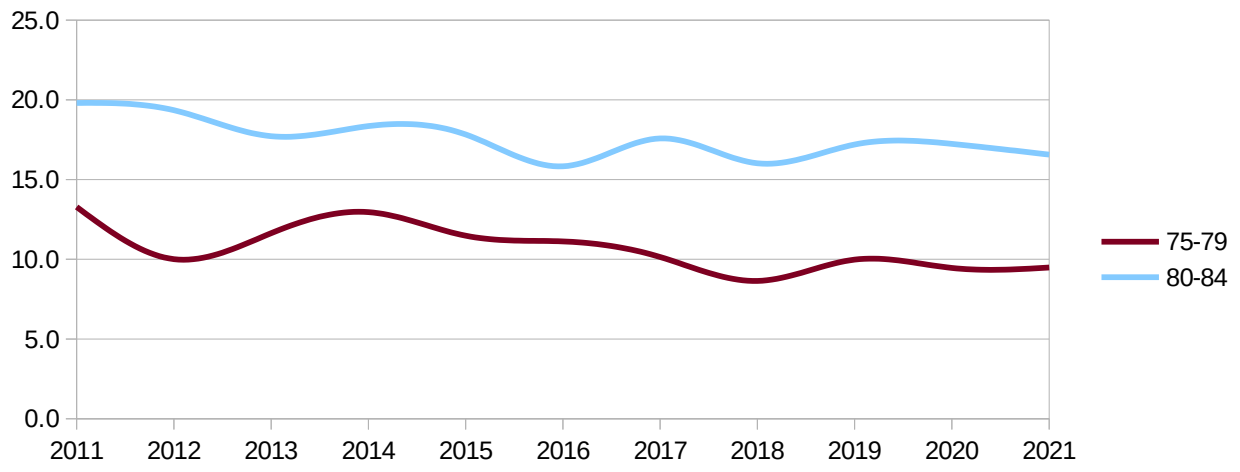
## Distribuzione decessi per fascia d'età

eta	2011	2012	2013	2014	2015	2016	2017	2018	2019	2020	2021
00-00	0.08	0.15	0.15	0.15	0.07	0.15	0.32	0.15	0.07	0.00	0.00
01-04	0.00	0.00	0.08	0.15	0.00	0.00	0.06	0.00	0.07	0.07	0.00
05-09	0.00	0.00	0.00	0.00	0.00	0.00	0.06	0.00	0.00	0.07	0.00
10-14	0.00	0.07	0.08	0.00	0.07	0.00	0.00	0.22	0.00	0.00	0.12
15-19	0.33	0.00	0.23	0.07	0.00	0.07	0.00	0.15	0.07	0.00	0.06
20-24	0.49	0.07	0.15	0.00	0.07	0.29	0.13	0.07	0.00	0.20	0.06
25-29	0.24	0.30	0.00	0.22	0.20	0.22	0.06	0.15	0.21	0.07	0.12
30-34	0.49	0.30	0.38	0.15	0.34	0.52	0.13	0.07	0.14	0.20	0.18
35-39	0.24	0.52	0.53	0.60	0.54	0.44	0.06	0.22	0.21	0.07	0.12
40-44	0.24	0.67	0.60	0.37	0.81	0.44	0.57	0.37	0.42	0.47	0.31
45-49	1.14	0.82	1.28	0.75	1.01	0.88	0.63	0.60	1.06	1.07	0.43
50-54	1.79	1.33	1.50	1.42	1.22	0.96	0.88	1.19	1.49	1.68	1.29
55-59	2.77	2.59	1.88	2.25	2.09	2.28	1.70	2.38	2.34	1.81	1.91
60-64	3.34	3.71	3.45	3.30	2.77	3.31	3.59	3.80	2.62	2.82	3.26
65-69	4.07	3.85	4.35	4.57	4.46	3.90	4.10	4.47	4.25	3.76	4.56
70-74	7.58	8.01	5.71	7.27	5.74	6.19	5.55	6.63	6.65	6.57	7.57
75-79	13.28	10.01	11.64	12.96	11.48	11.12	10.14	8.64	9.98	9.46	9.48
80-84	19.80	19.35	17.72	18.35	17.83	15.83	17.58	16.02	17.20	17.24	16.56
85-89	21.92	23.13	25.98	23.22	25.73	25.18	26.28	24.74	23.21	24.82	22.48
90-94	14.83	17.05	17.49	19.40	19.99	20.77	19.85	20.04	20.03	20.52	20.81
95-99	6.19	6.38	5.56	3.82	3.98	5.67	7.06	8.64	9.27	8.05	8.81
99+++	1.14	1.70	1.28	0.97	1.62	1.77	1.26	1.42	0.71	1.07	1.85







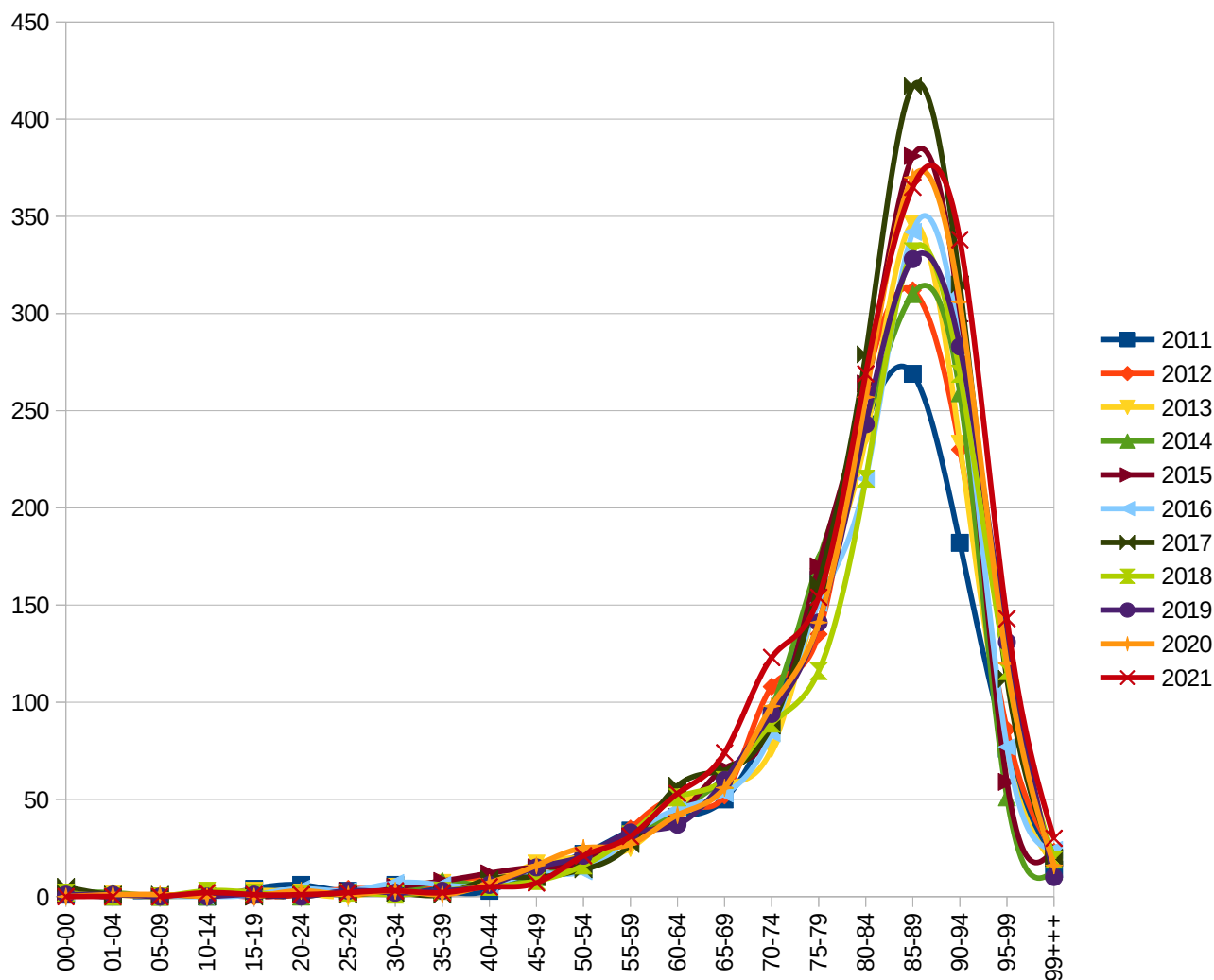


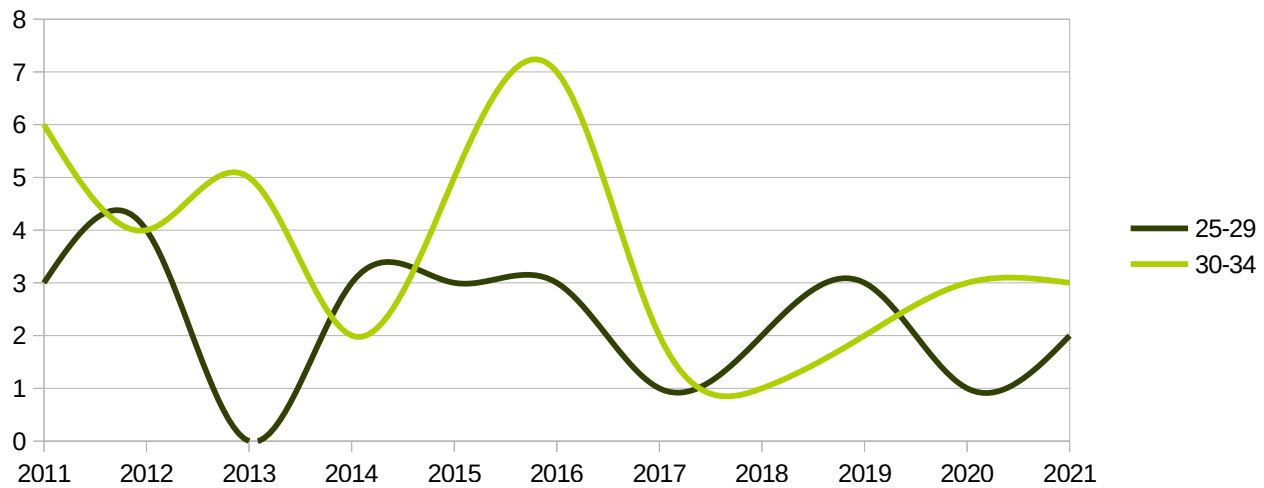
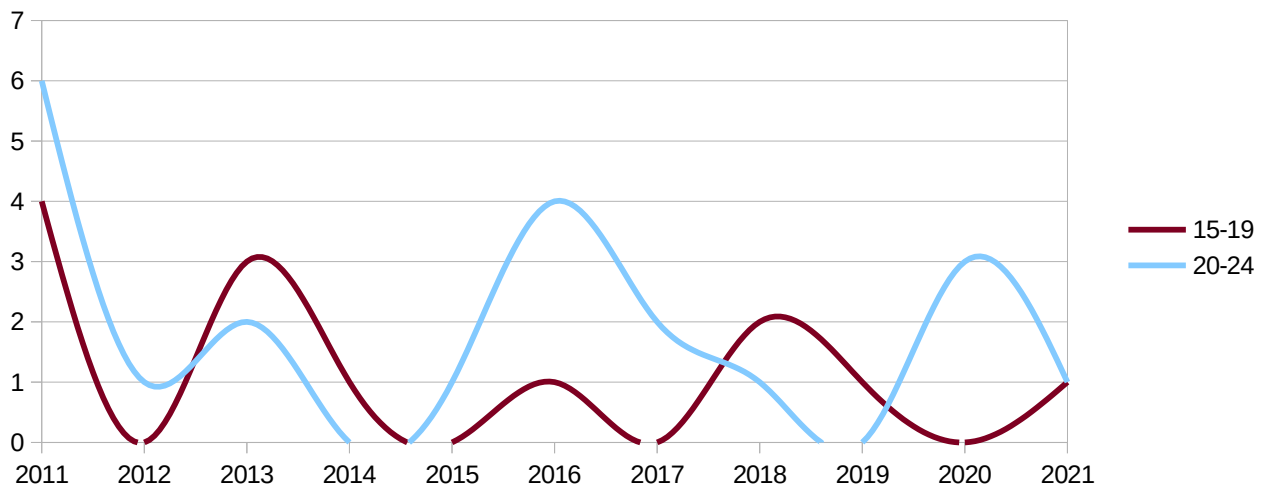
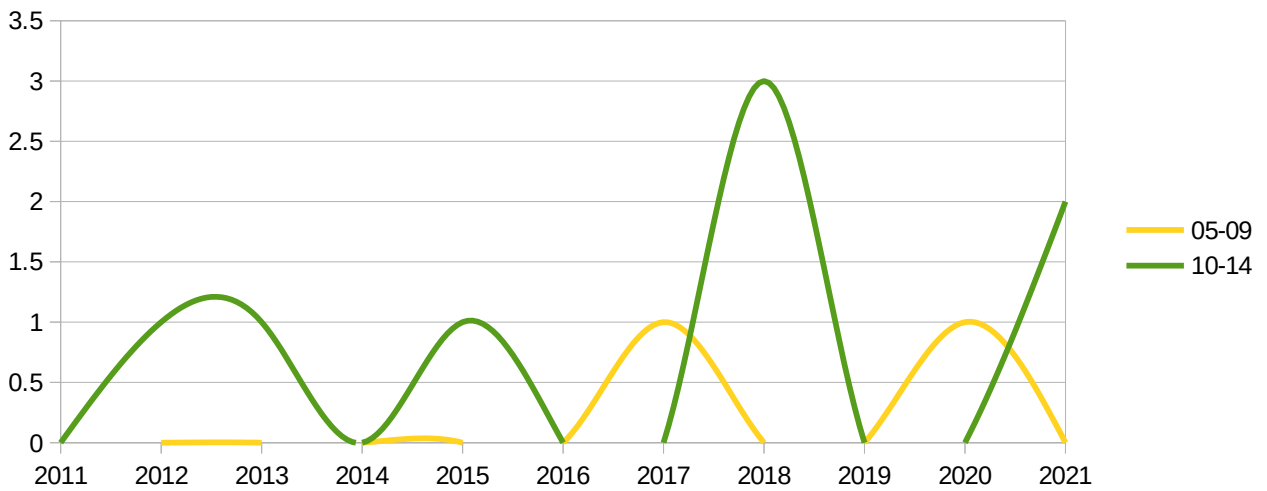
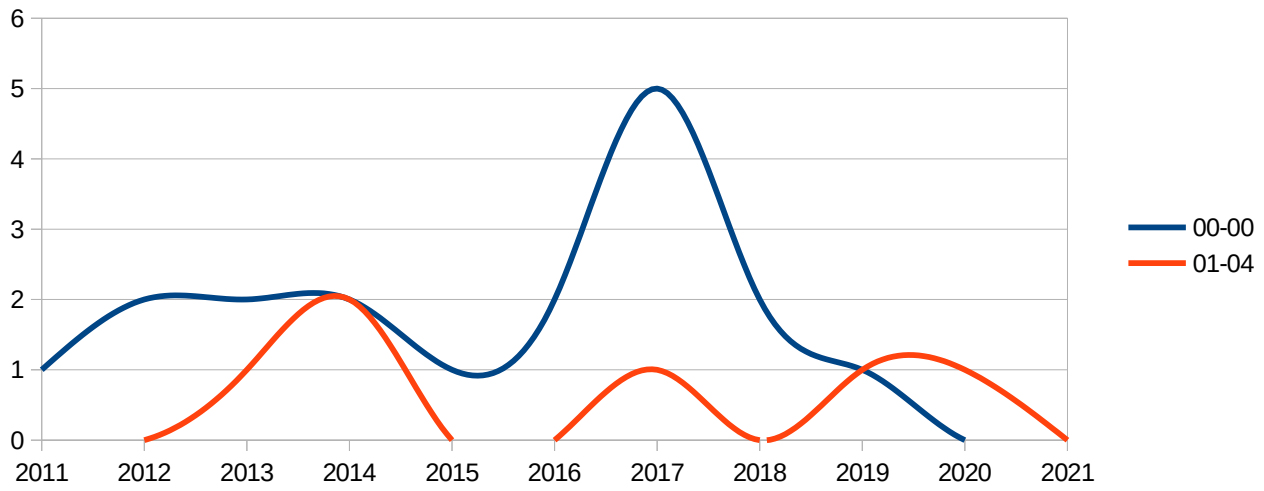
Regione - all -  
 Provincia fermo  
 mese - multiple -

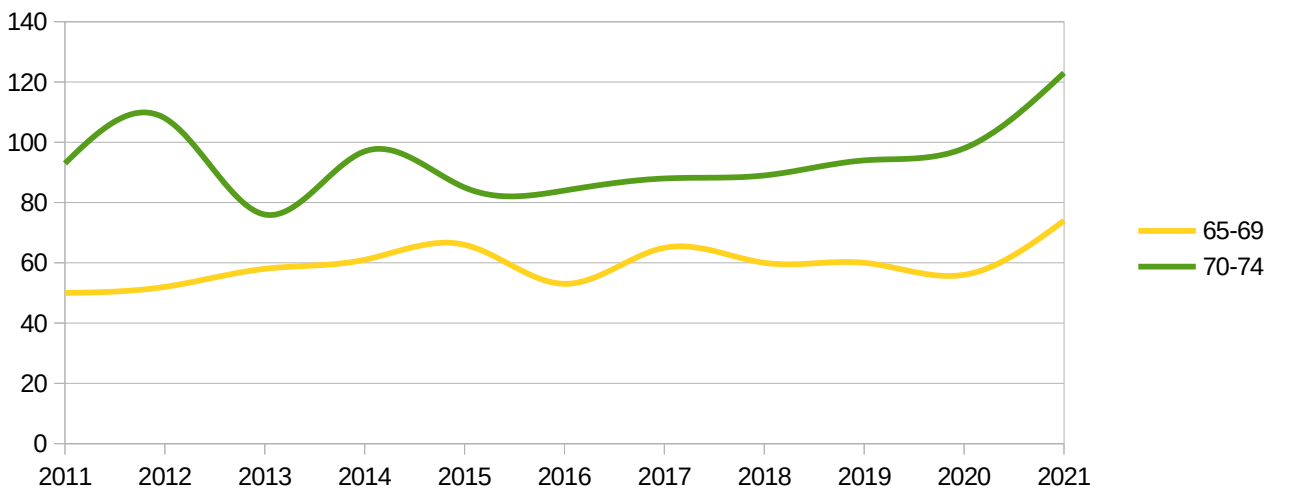
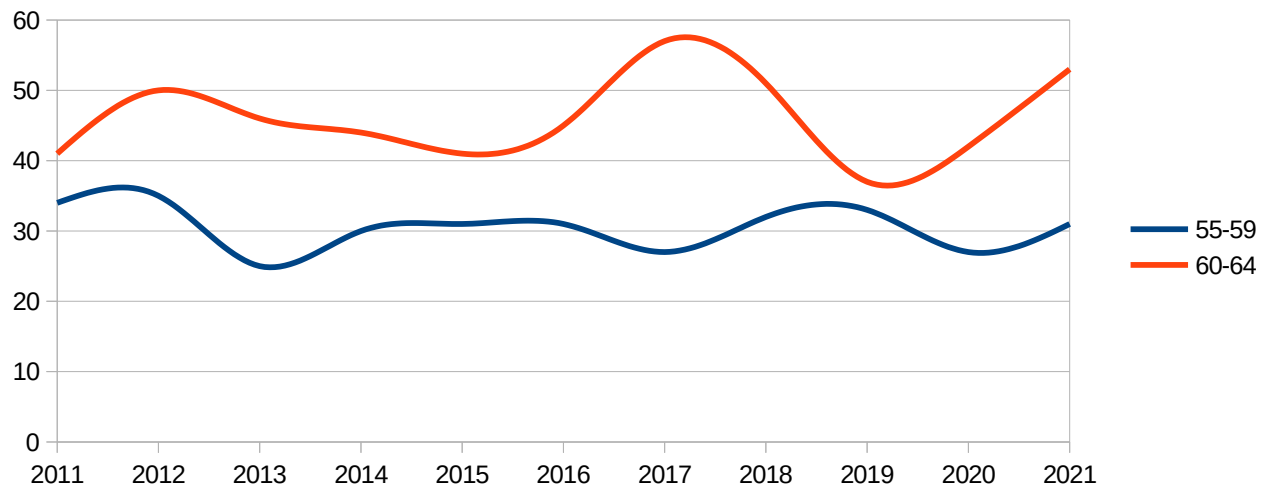
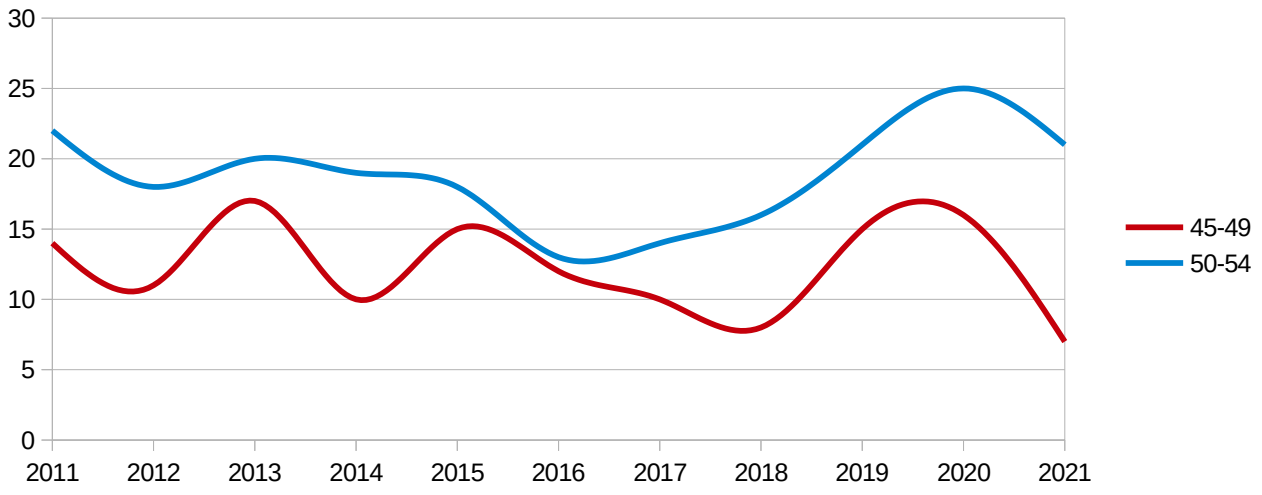
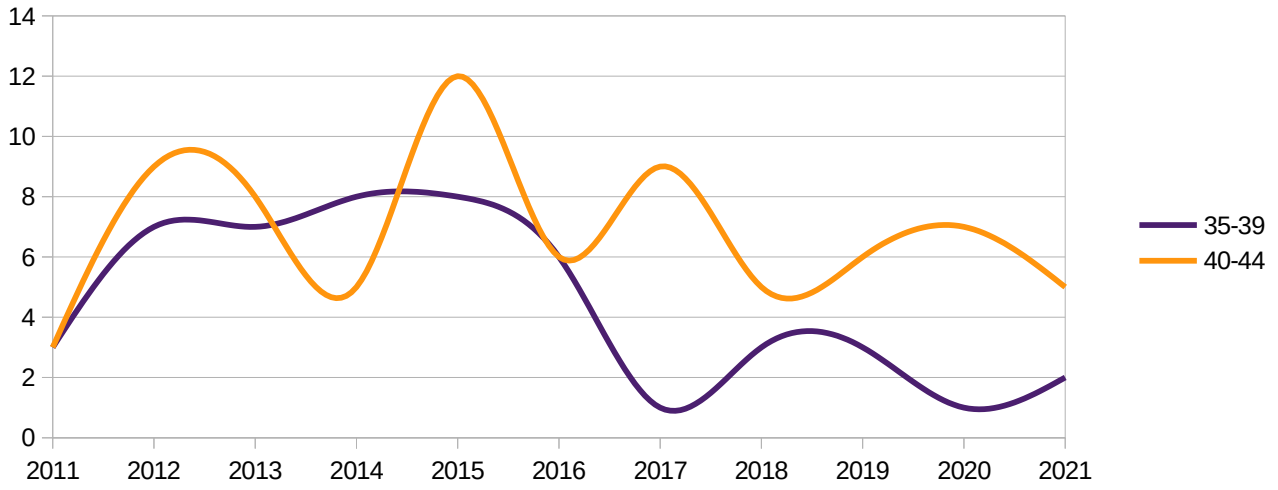
mesi gennaio → agosto  
 Dati ISTAT al 31 agosto 2021

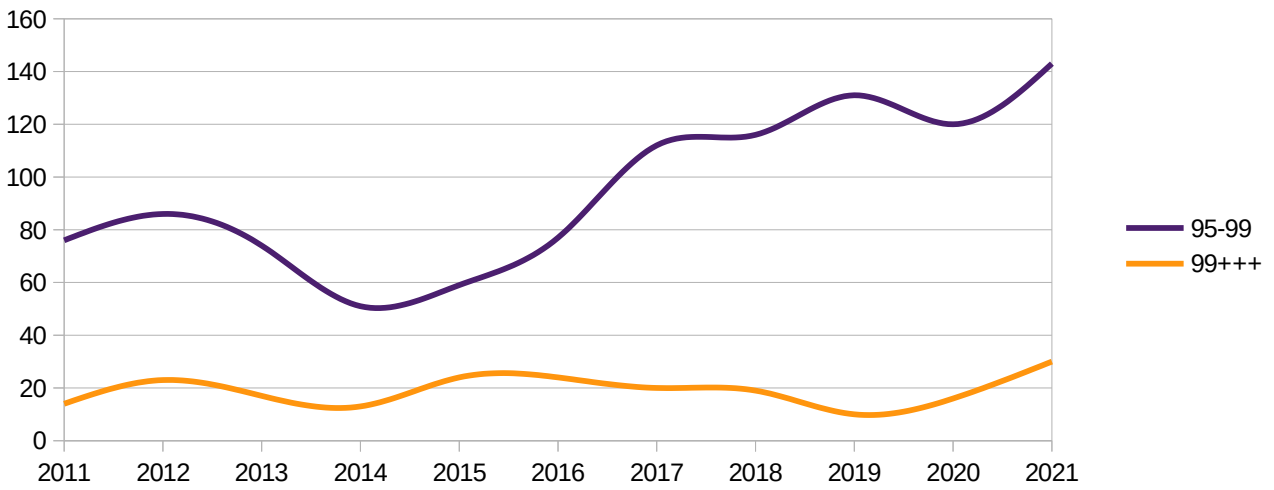
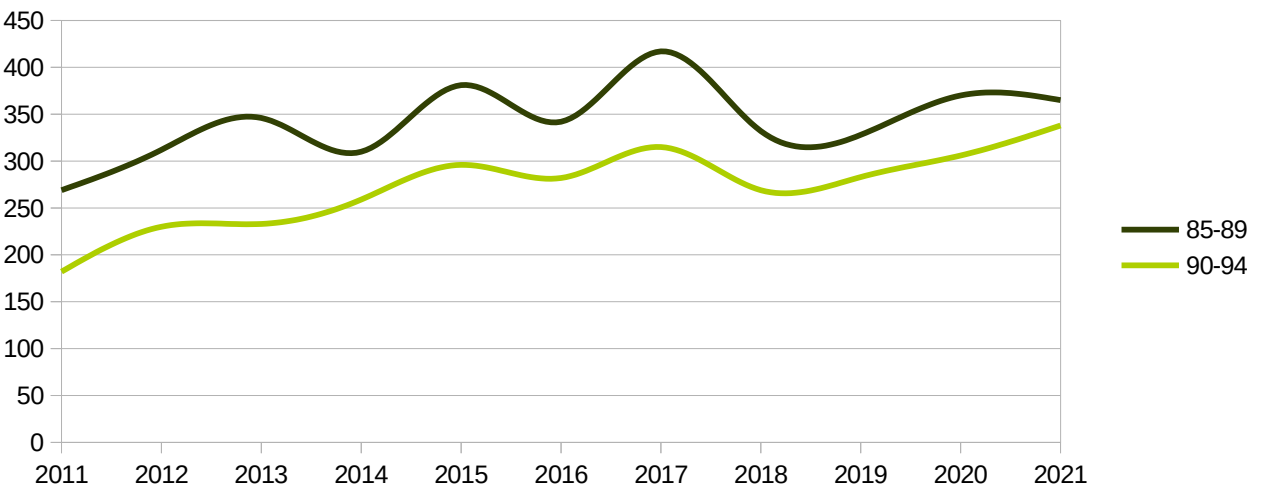
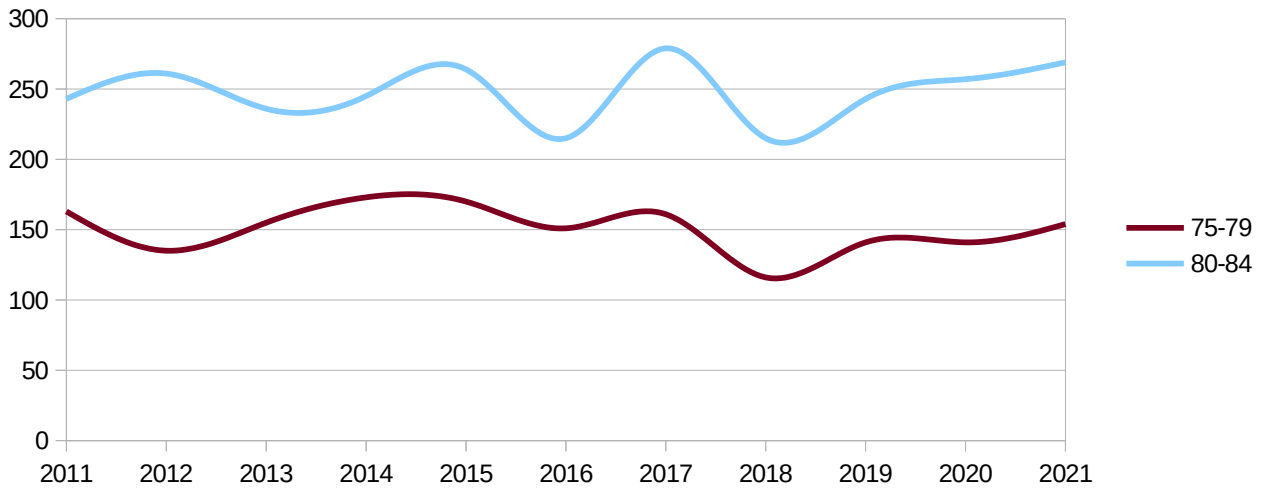
## Decessi per fascia d'età

eta	2011	2012	2013	2014	2015	2016	2017	2018	2019	2020	2021
00-00	1	2	2	2	1	2	5	2	1	0	0
01-04	0	0	1	2	0	0	1	0	1	1	0
05-09	0	0	0	0	0	0	1	0	0	1	0
10-14	0	1	1	0	1	0	0	3	0	0	2
15-19	4	0	3	1	0	1	0	2	1	0	1
20-24	6	1	2	0	1	4	2	1	0	3	1
25-29	3	4	0	3	3	3	1	2	3	1	2
30-34	6	4	5	2	5	7	2	1	2	3	3
35-39	3	7	7	8	8	6	1	3	3	1	2
40-44	3	9	8	5	12	6	9	5	6	7	5
45-49	14	11	17	10	15	12	10	8	15	16	7
50-54	22	18	20	19	18	13	14	16	21	25	21
55-59	34	35	25	30	31	31	27	32	33	27	31
60-64	41	50	46	44	41	45	57	51	37	42	53
65-69	50	52	58	61	66	53	65	60	60	56	74
70-74	93	108	76	97	85	84	88	89	94	98	123
75-79	163	135	155	173	170	151	161	116	141	141	154
80-84	243	261	236	245	264	215	279	215	243	257	269
85-89	269	312	346	310	381	342	417	332	328	370	365
90-94	182	230	233	259	296	282	315	269	283	306	338
95-99	76	86	74	51	59	77	112	116	131	120	143
99+++	14	23	17	13	24	24	20	19	10	16	30











Regione - all -  
 Provincia **fermo**  
 mese - multiple -

mesi gennaio → agosto  
 Dati ISTAT al 31 agosto 2021

### Confronto MIN(2011-2019), 2020, 2021, MAX(2011-2019)

eta	MIN	2020	2021	MAX
00-00	1	0	0	5
01-04	0	1	0	2
05-09	0	1	0	1
10-14	0	0	2	3
15-19	0	0	1	4
20-24	0	3	1	6
25-29	0	1	2	4
30-34	1	3	3	7
35-39	1	1	2	8
40-44	3	7	5	12
45-49	8	16	7	17
50-54	13	25	21	22
55-59	25	27	31	35
60-64	37	42	53	57
65-69	50	56	74	66
70-74	76	98	123	108
75-79	116	141	154	173
80-84	215	257	269	279
85-89	269	370	365	417
90-94	182	306	338	315
95-99	51	120	143	131
99+++	10	16	30	24

