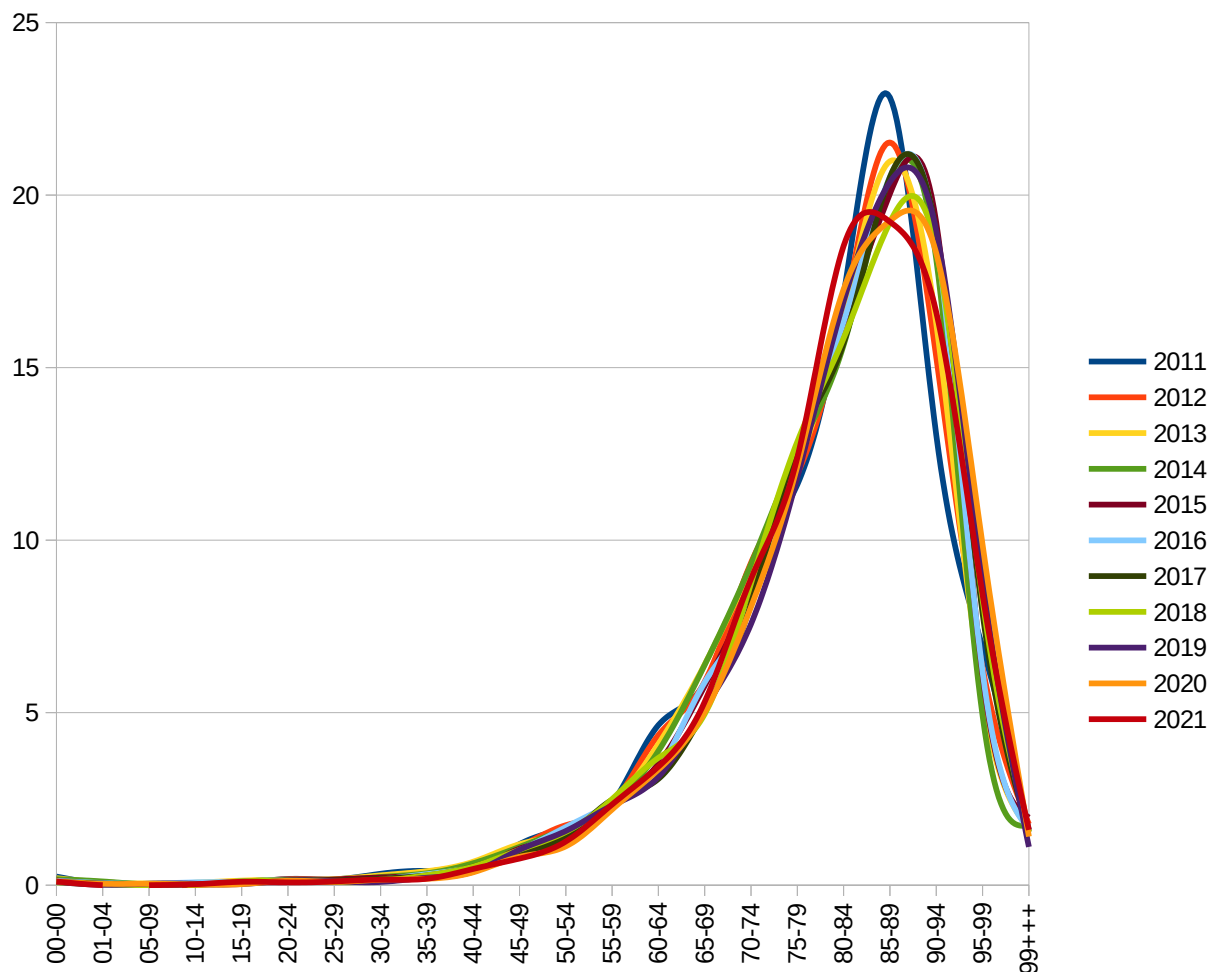
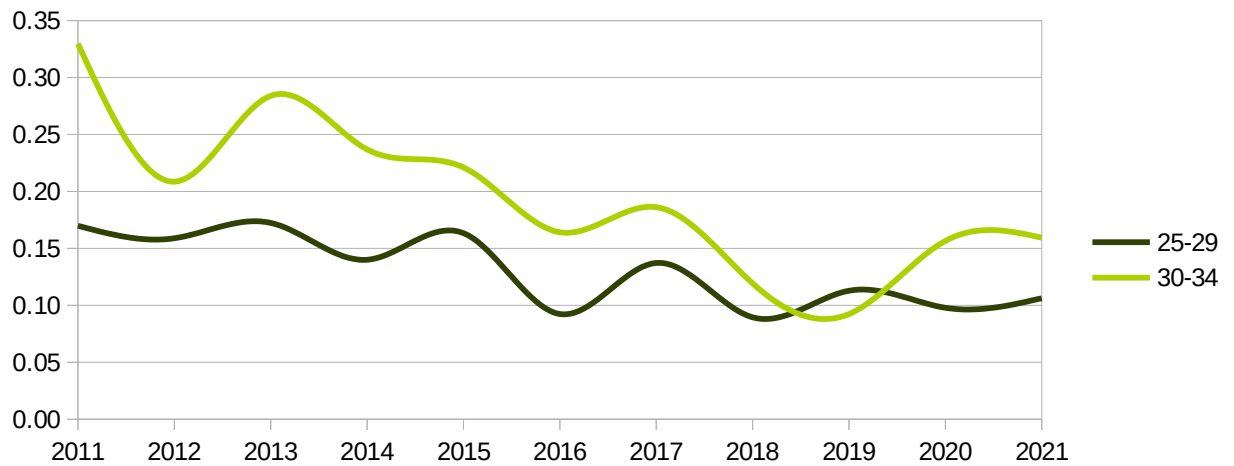
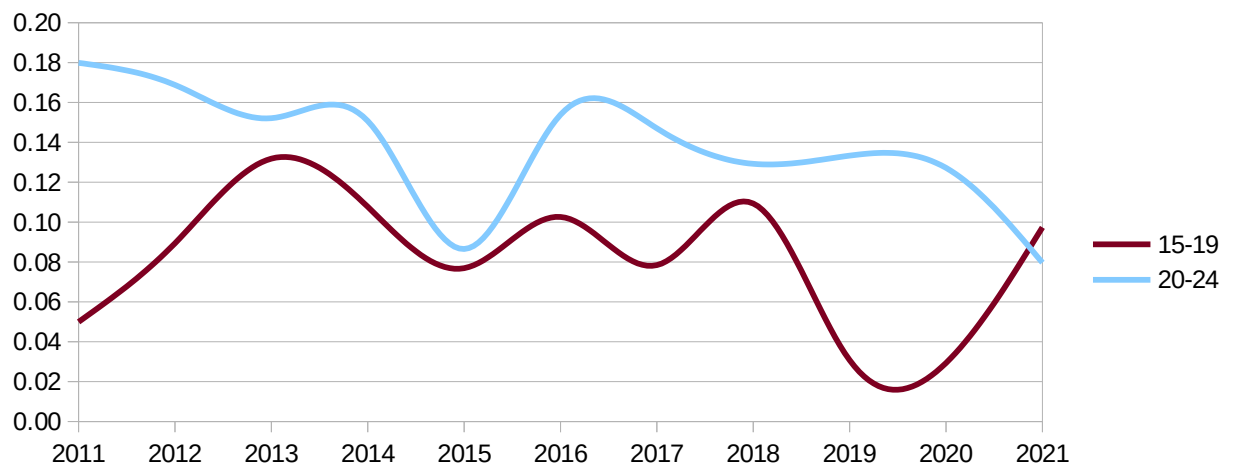
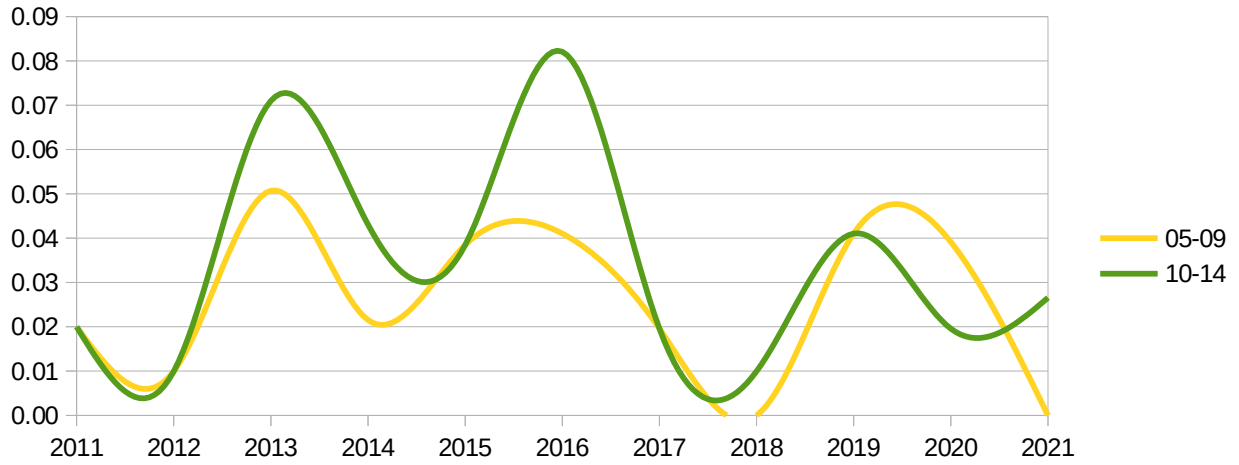
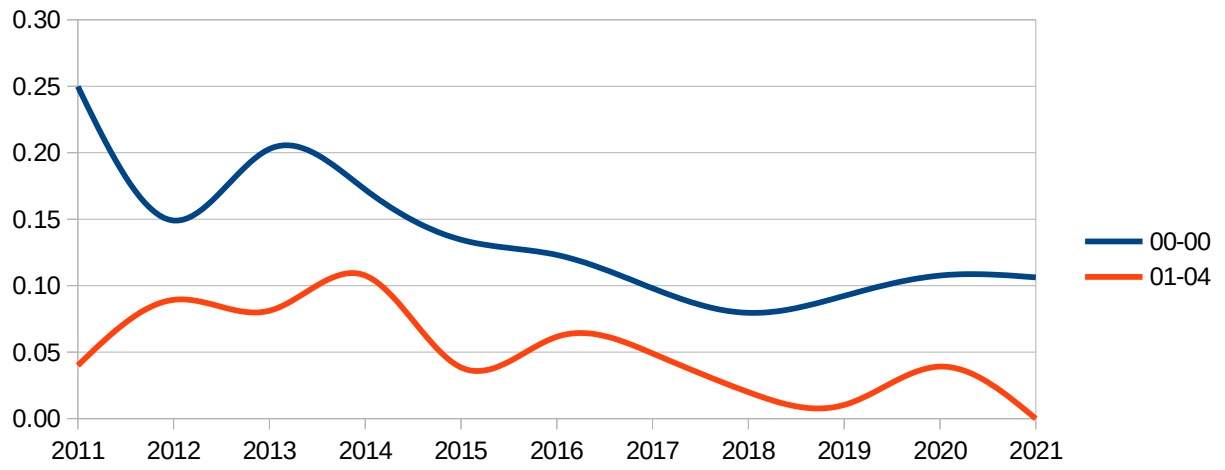
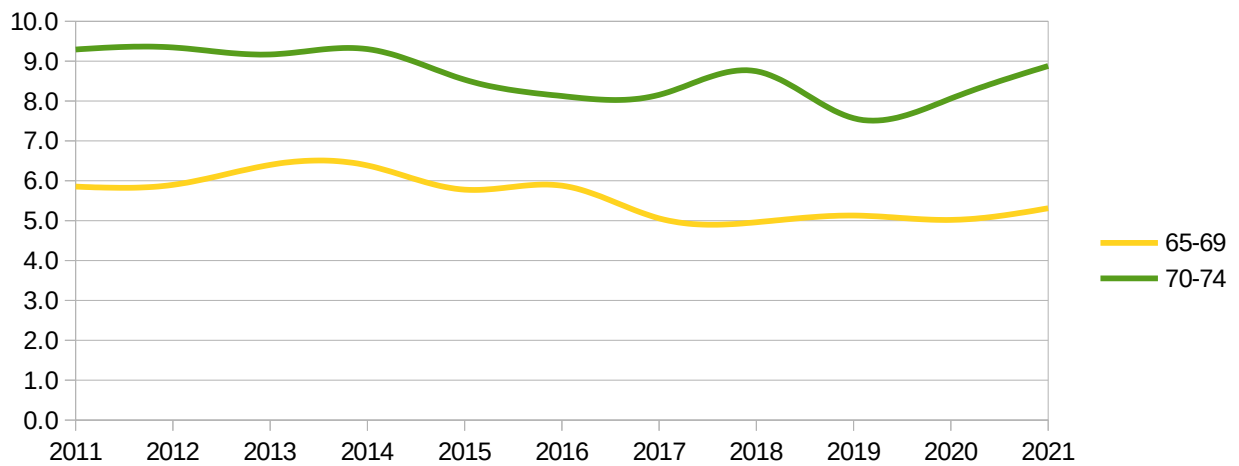
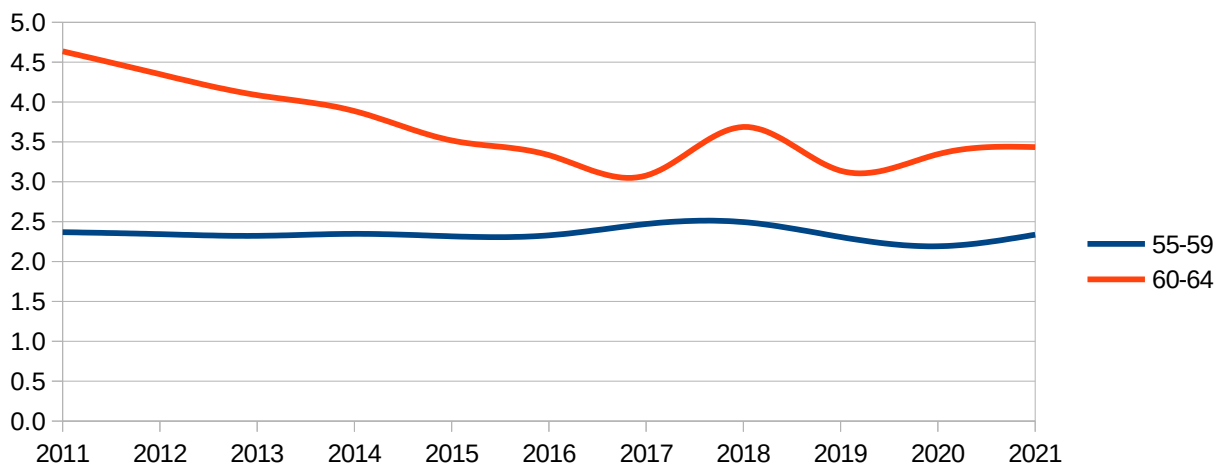
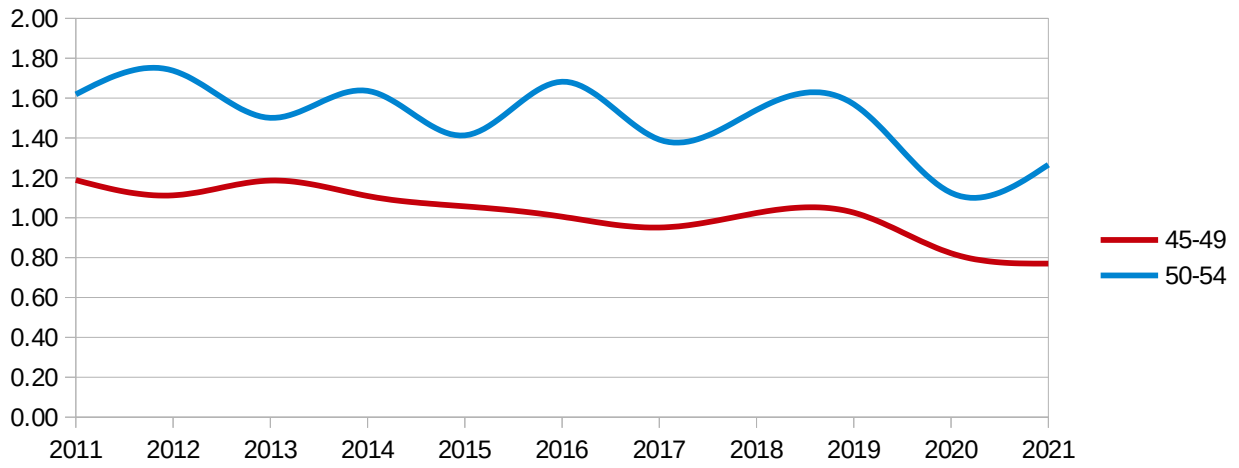
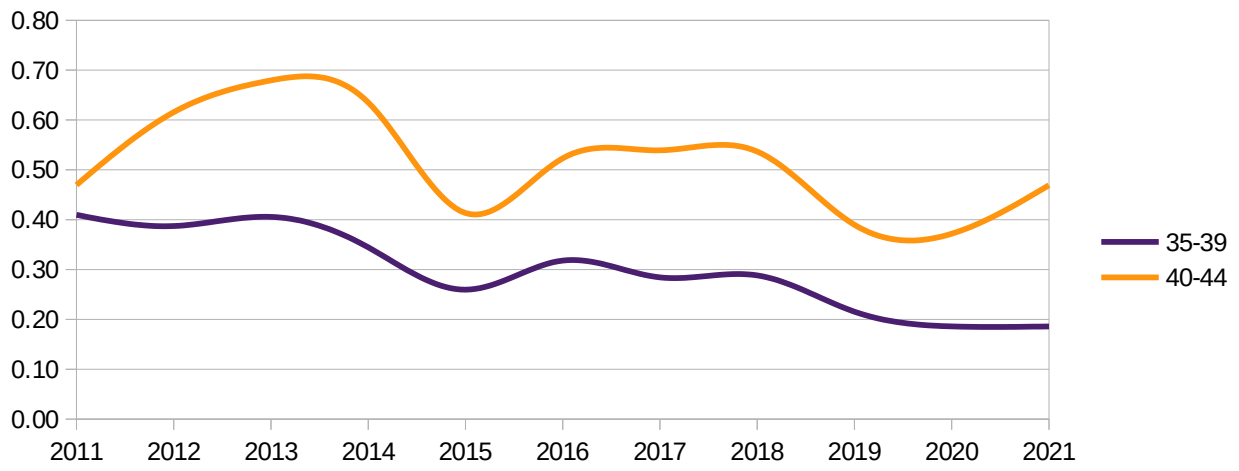


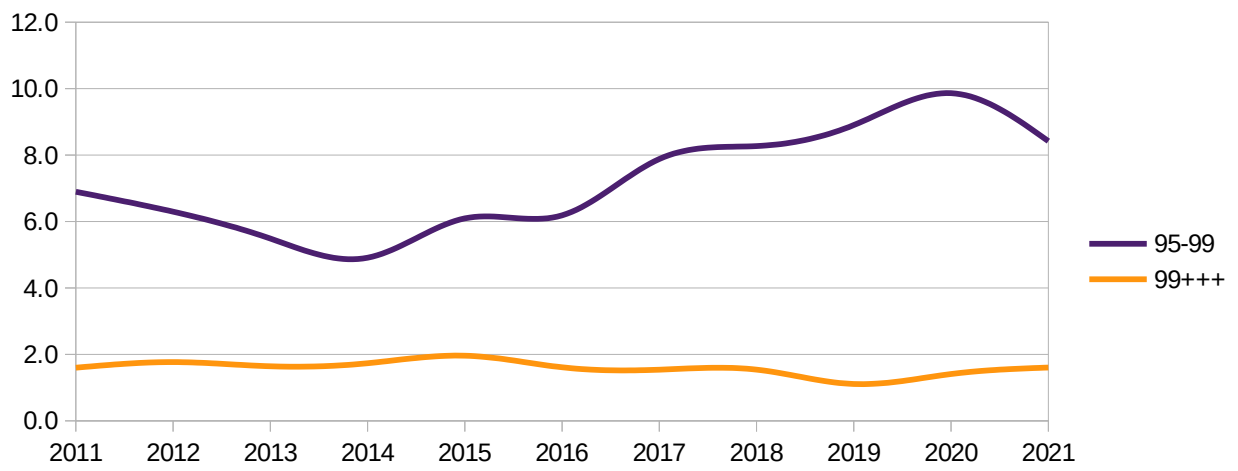
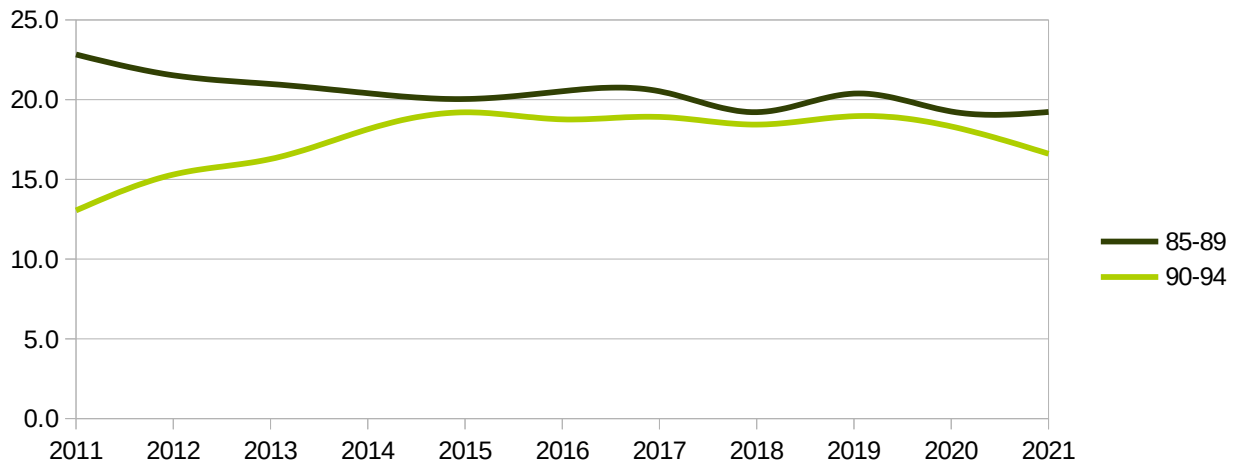
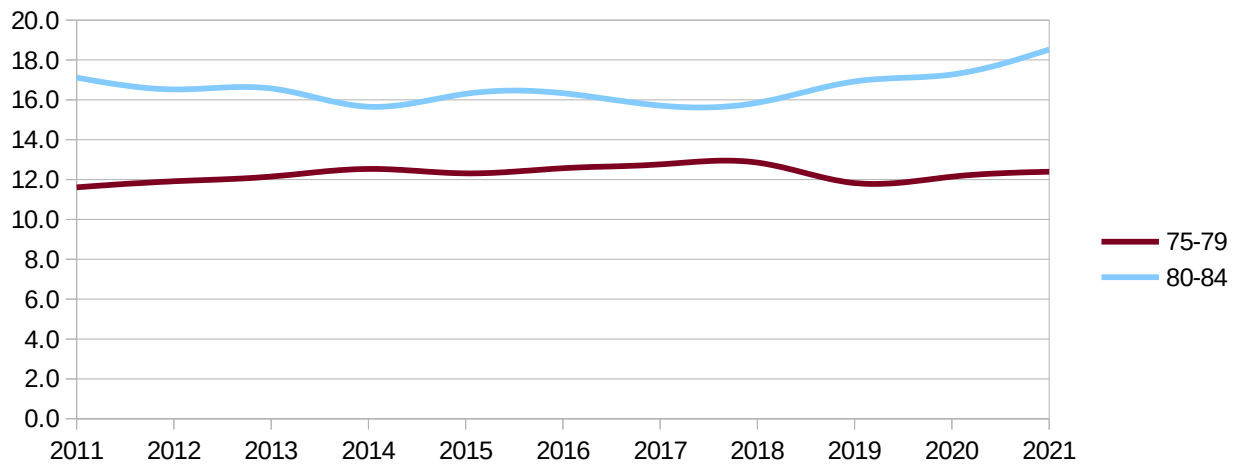
## Distribuzione decessi per fascia d'età

eta	2011	2012	2013	2014	2015	2016	2017	2018	2019	2020	2021
00-00	0.25	0.15	0.20	0.17	0.13	0.12	0.10	0.08	0.09	0.11	0.11
01-04	0.04	0.09	0.08	0.11	0.04	0.06	0.05	0.02	0.01	0.04	0.00
05-09	0.02	0.01	0.05	0.02	0.04	0.04	0.02	0.00	0.04	0.04	0.00
10-14	0.02	0.01	0.07	0.04	0.04	0.08	0.02	0.01	0.04	0.02	0.03
15-19	0.05	0.09	0.13	0.11	0.08	0.10	0.08	0.11	0.03	0.03	0.10
20-24	0.18	0.17	0.15	0.15	0.09	0.15	0.15	0.13	0.13	0.13	0.08
25-29	0.17	0.16	0.17	0.14	0.16	0.09	0.14	0.09	0.11	0.10	0.11
30-34	0.33	0.21	0.28	0.24	0.22	0.16	0.19	0.12	0.09	0.16	0.16
35-39	0.41	0.39	0.41	0.34	0.26	0.32	0.28	0.29	0.22	0.19	0.19
40-44	0.47	0.62	0.68	0.64	0.41	0.52	0.54	0.54	0.39	0.37	0.47
45-49	1.19	1.11	1.19	1.11	1.06	1.01	0.95	1.02	1.03	0.82	0.77
50-54	1.62	1.74	1.50	1.64	1.41	1.68	1.39	1.54	1.57	1.13	1.27
55-59	2.37	2.34	2.32	2.35	2.32	2.33	2.47	2.49	2.31	2.19	2.34
60-64	4.64	4.35	4.09	3.89	3.52	3.33	3.08	3.69	3.14	3.35	3.43
65-69	5.86	5.90	6.40	6.38	5.78	5.88	5.06	4.96	5.13	5.02	5.31
70-74	9.29	9.34	9.17	9.30	8.54	8.12	8.16	8.75	7.57	8.06	8.88
75-79	11.61	11.92	12.15	12.53	12.31	12.57	12.76	12.85	11.83	12.14	12.39
80-84	17.12	16.52	16.57	15.65	16.30	16.33	15.71	15.85	16.92	17.27	18.53
85-89	22.83	21.53	20.98	20.40	20.04	20.53	20.53	19.21	20.38	19.26	19.23
90-94	13.05	15.30	16.28	18.14	19.20	18.76	18.92	18.44	18.96	18.32	16.61
95-99	6.89	6.30	5.49	4.91	6.09	6.19	7.88	8.27	8.90	9.86	8.42
99+++	1.60	1.77	1.64	1.73	1.96	1.61	1.54	1.54	1.11	1.41	1.60







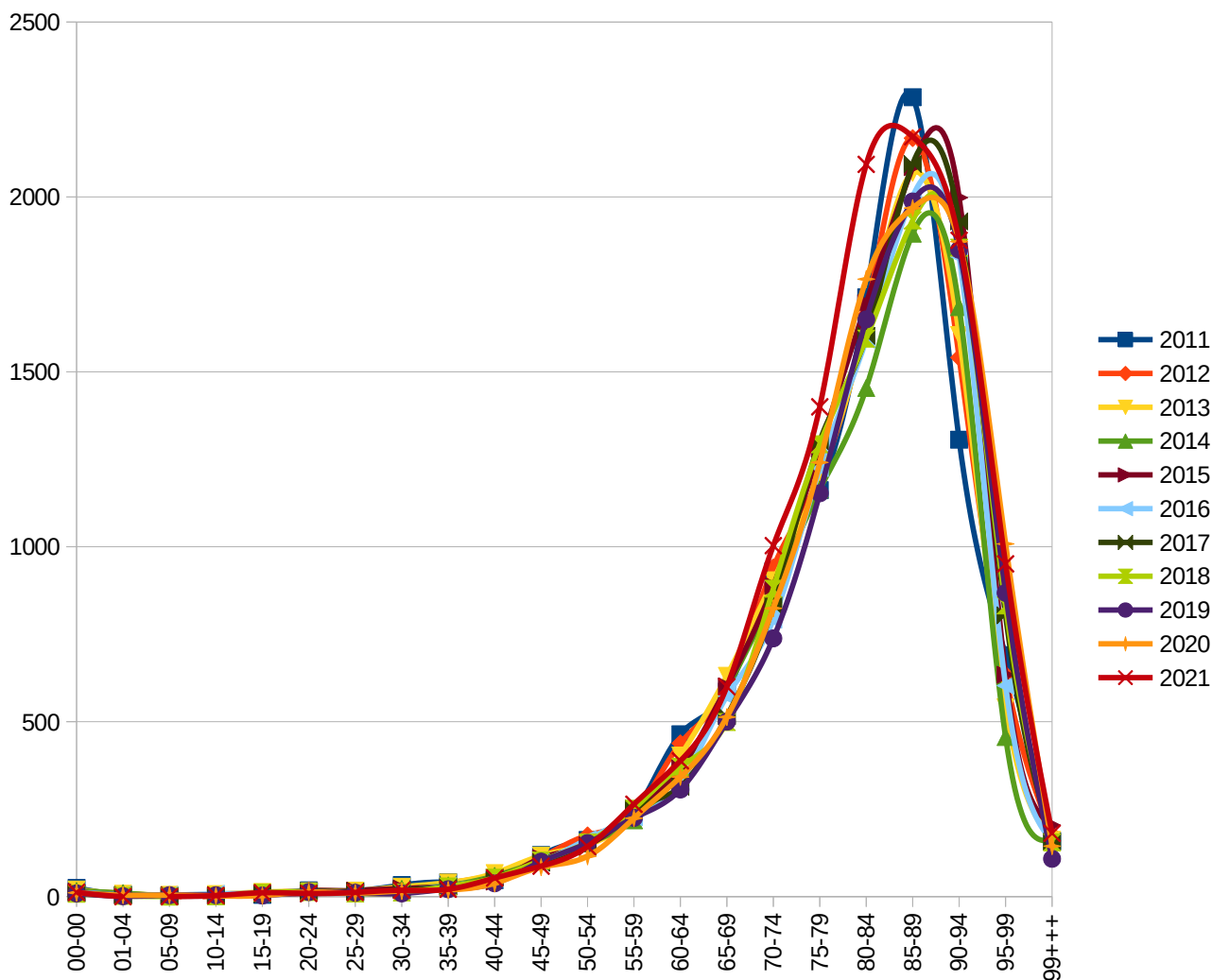


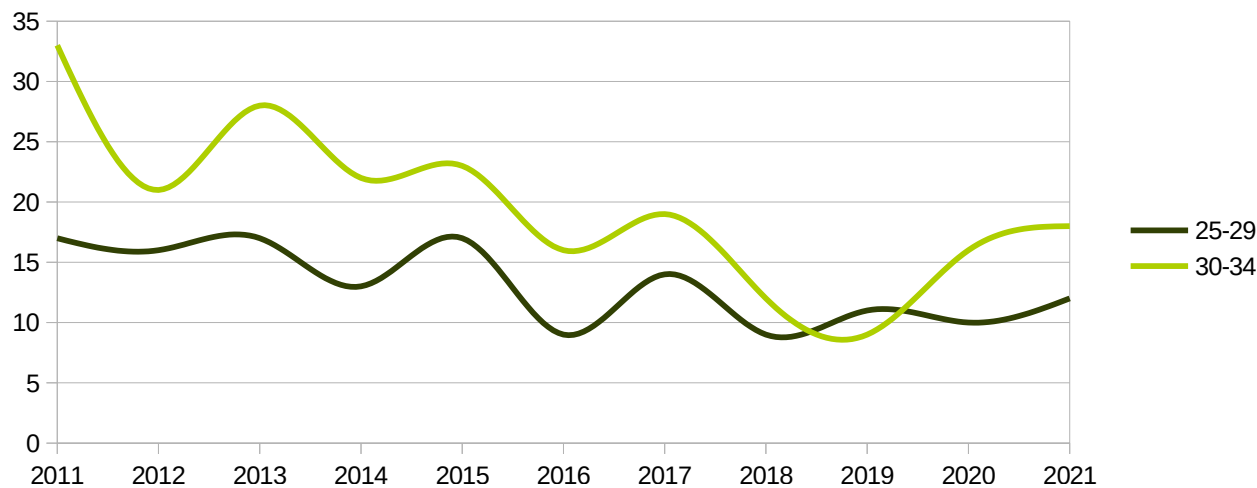
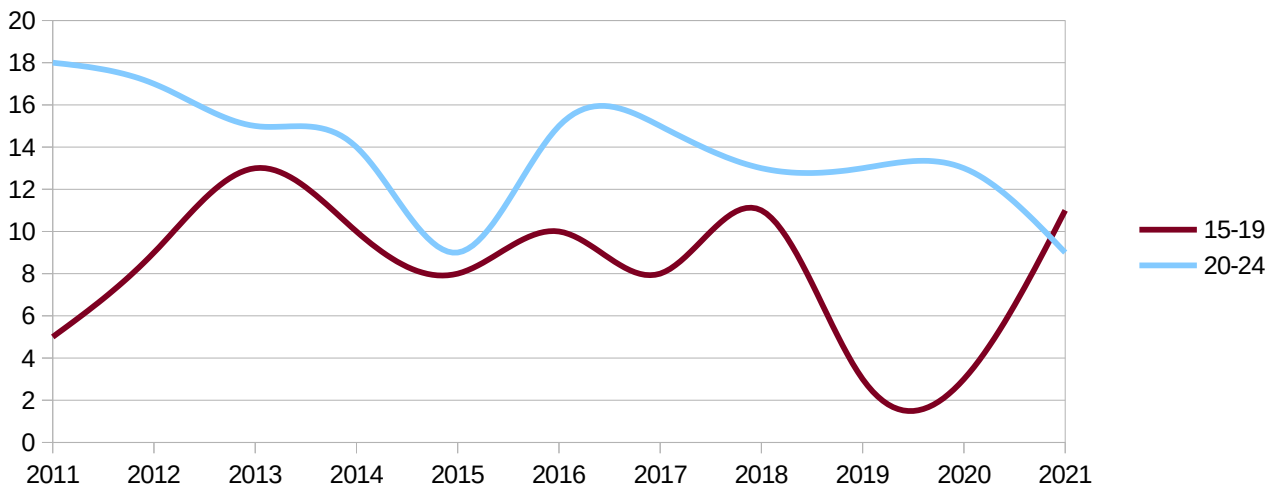
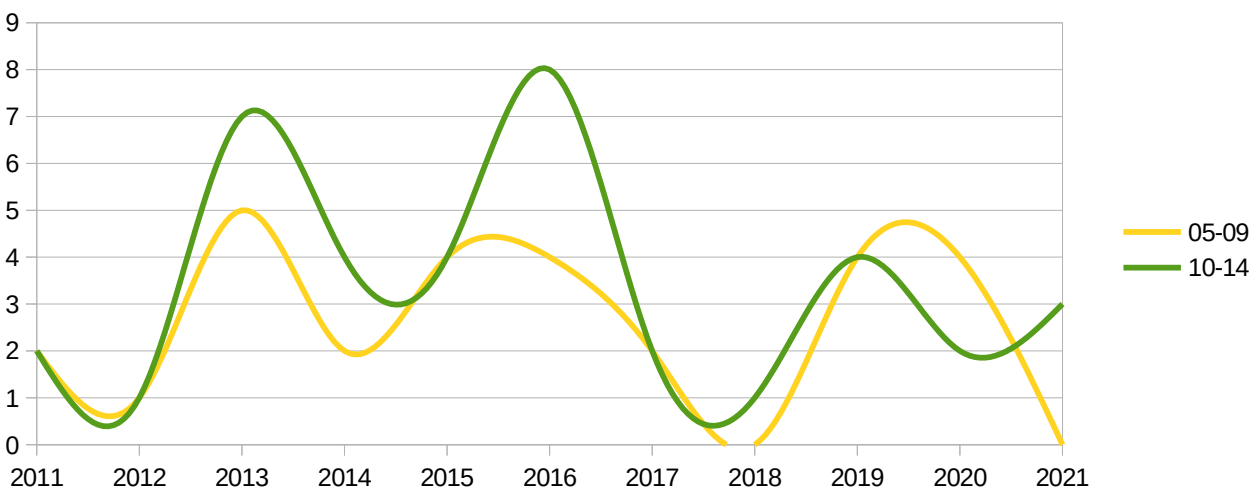
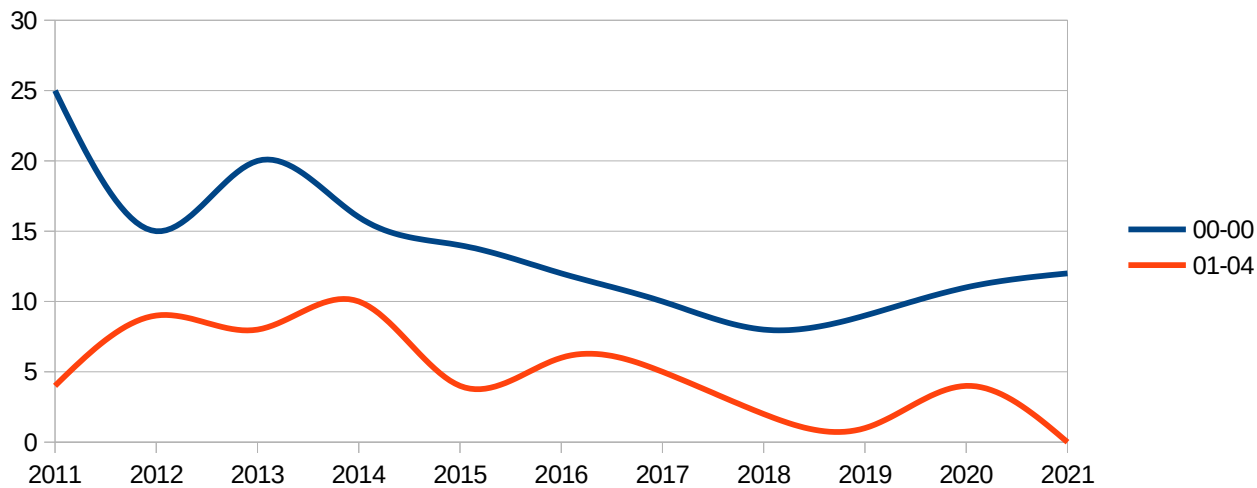
Regione friuli-venezia-giulia  
 Provincia - all -  
 mese - multiple -

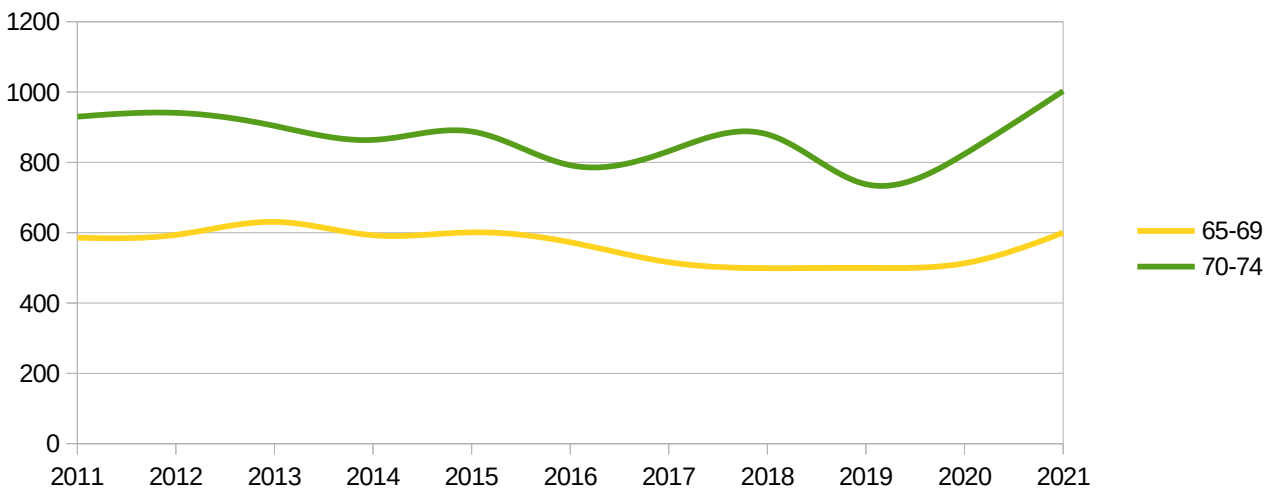
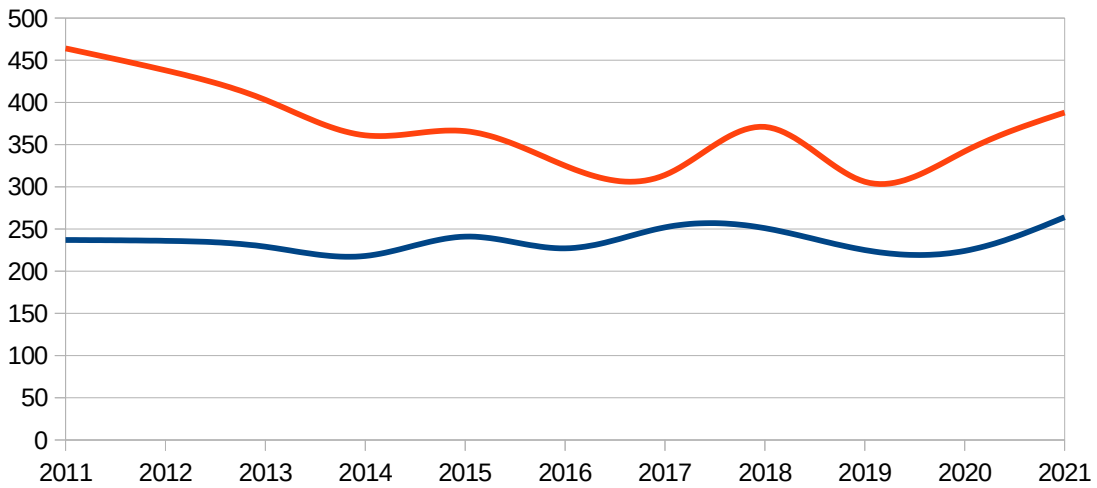
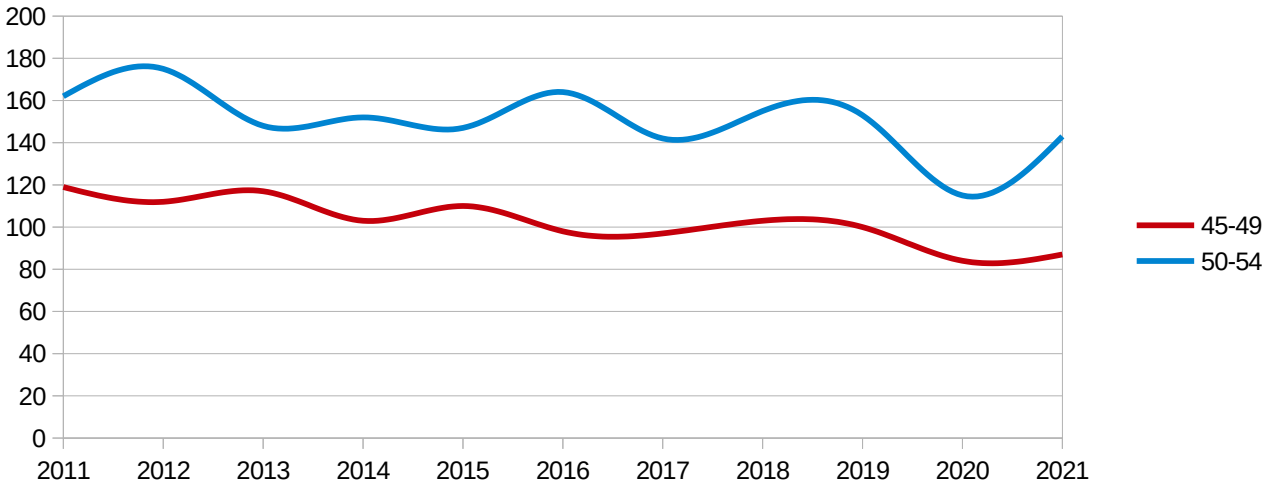
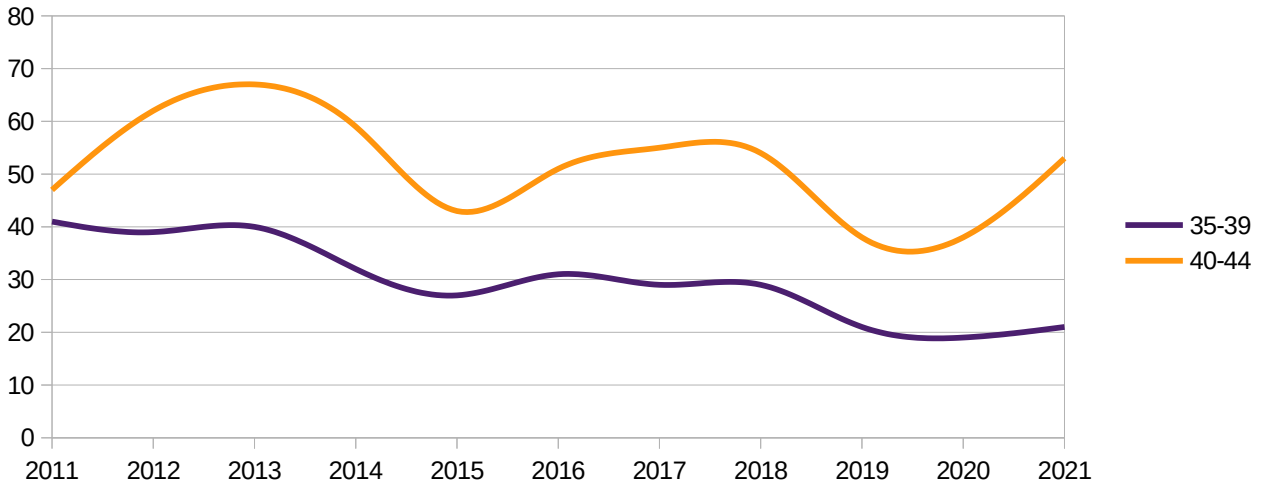
mesi gennaio → agosto  
 Dati ISTAT al 31 agosto 2021

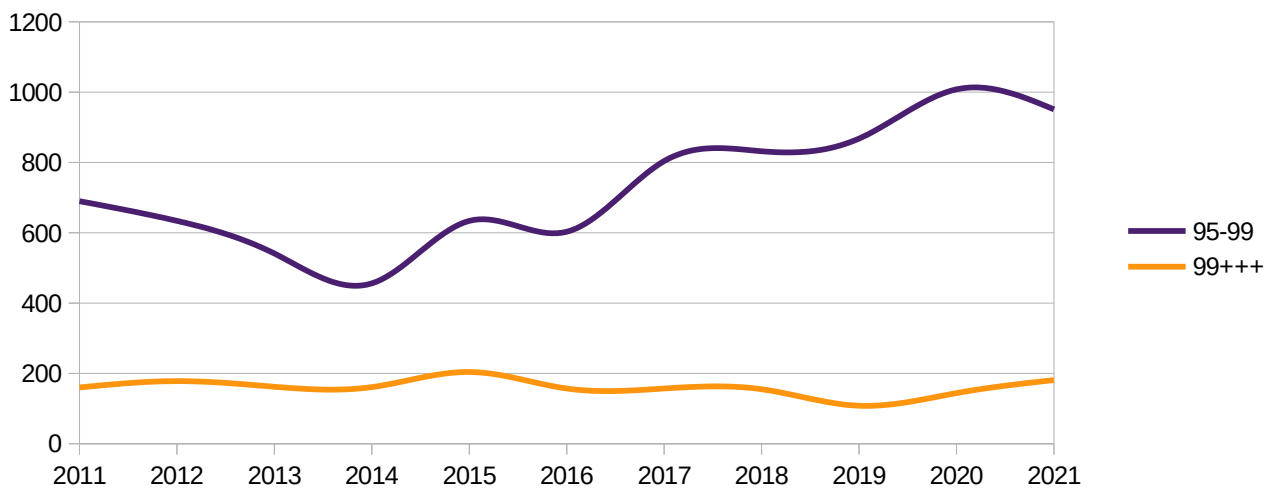
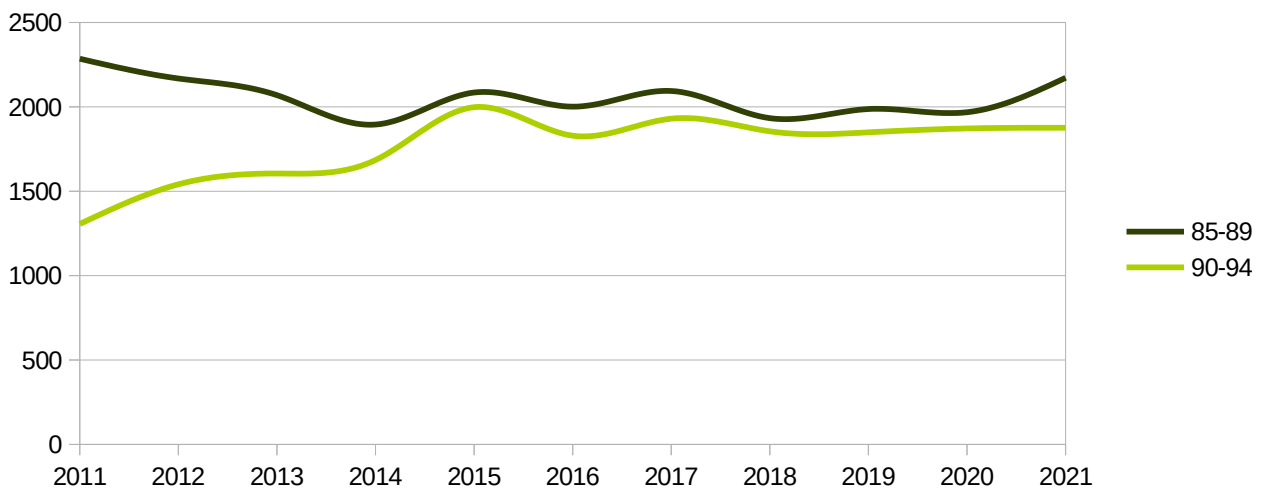
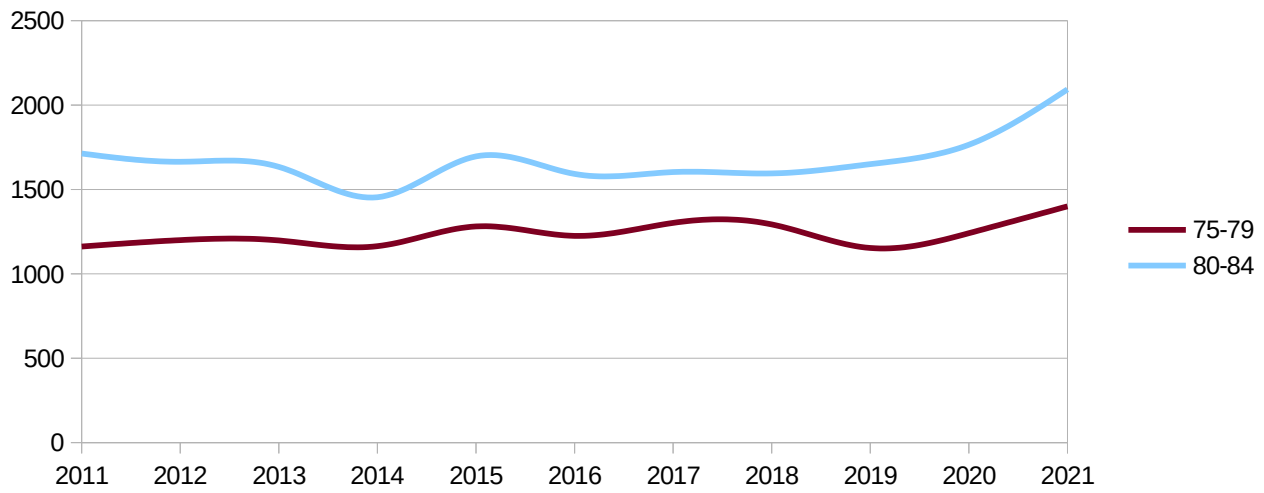
## Decessi per fascia d'età

eta	2011	2012	2013	2014	2015	2016	2017	2018	2019	2020	2021
00-00	25	15	20	16	14	12	10	8	9	11	12
01-04	4	9	8	10	4	6	5	2	1	4	0
05-09	2	1	5	2	4	4	2	0	4	4	0
10-14	2	1	7	4	4	8	2	1	4	2	3
15-19	5	9	13	10	8	10	8	11	3	3	11
20-24	18	17	15	14	9	15	15	13	13	13	9
25-29	17	16	17	13	17	9	14	9	11	10	12
30-34	33	21	28	22	23	16	19	12	9	16	18
35-39	41	39	40	32	27	31	29	29	21	19	21
40-44	47	62	67	59	43	51	55	54	38	38	53
45-49	119	112	117	103	110	98	97	103	100	84	87
50-54	162	175	148	152	147	164	142	155	153	115	143
55-59	237	236	229	218	241	227	252	251	225	224	264
60-64	464	438	403	361	366	325	314	371	306	342	388
65-69	586	594	631	593	601	573	516	499	500	513	600
70-74	930	941	904	864	888	792	832	880	738	824	1003
75-79	1162	1200	1198	1164	1281	1225	1302	1293	1153	1241	1400
80-84	1713	1664	1634	1454	1696	1592	1603	1595	1650	1765	2093
85-89	2285	2168	2069	1895	2085	2001	2094	1933	1987	1968	2172
90-94	1306	1541	1605	1685	1998	1829	1930	1855	1849	1872	1876
95-99	690	634	541	456	634	603	804	832	868	1008	951
99+++	160	178	162	161	204	157	157	155	108	144	181











Regione **friuli-venezia-giulia**

Provincia **- all -**

meese **- multiple -**

mesi **gennaio → agosto**

Dati ISTAT al **31 agosto 2021**

### Confronto MIN(2011-2019), 2020, 2021, MAX(2011-2019)

eta	MIN	2020	2021	MAX
00-00	8	11	12	25
01-04	1	4	0	10
05-09	0	4	0	5
10-14	1	2	3	8
15-19	3	3	11	13
20-24	9	13	9	18
25-29	9	10	12	17
30-34	9	16	18	33
35-39	21	19	21	41
40-44	38	38	53	67
45-49	97	84	87	119
50-54	142	115	143	175
55-59	218	224	264	252
60-64	306	342	388	464
65-69	499	513	600	631
70-74	738	824	1003	941
75-79	1153	1241	1400	1302
80-84	1454	1765	2093	1713
85-89	1895	1968	2172	2285
90-94	1306	1872	1876	1998
95-99	456	1008	951	868
99+++	108	144	181	204

