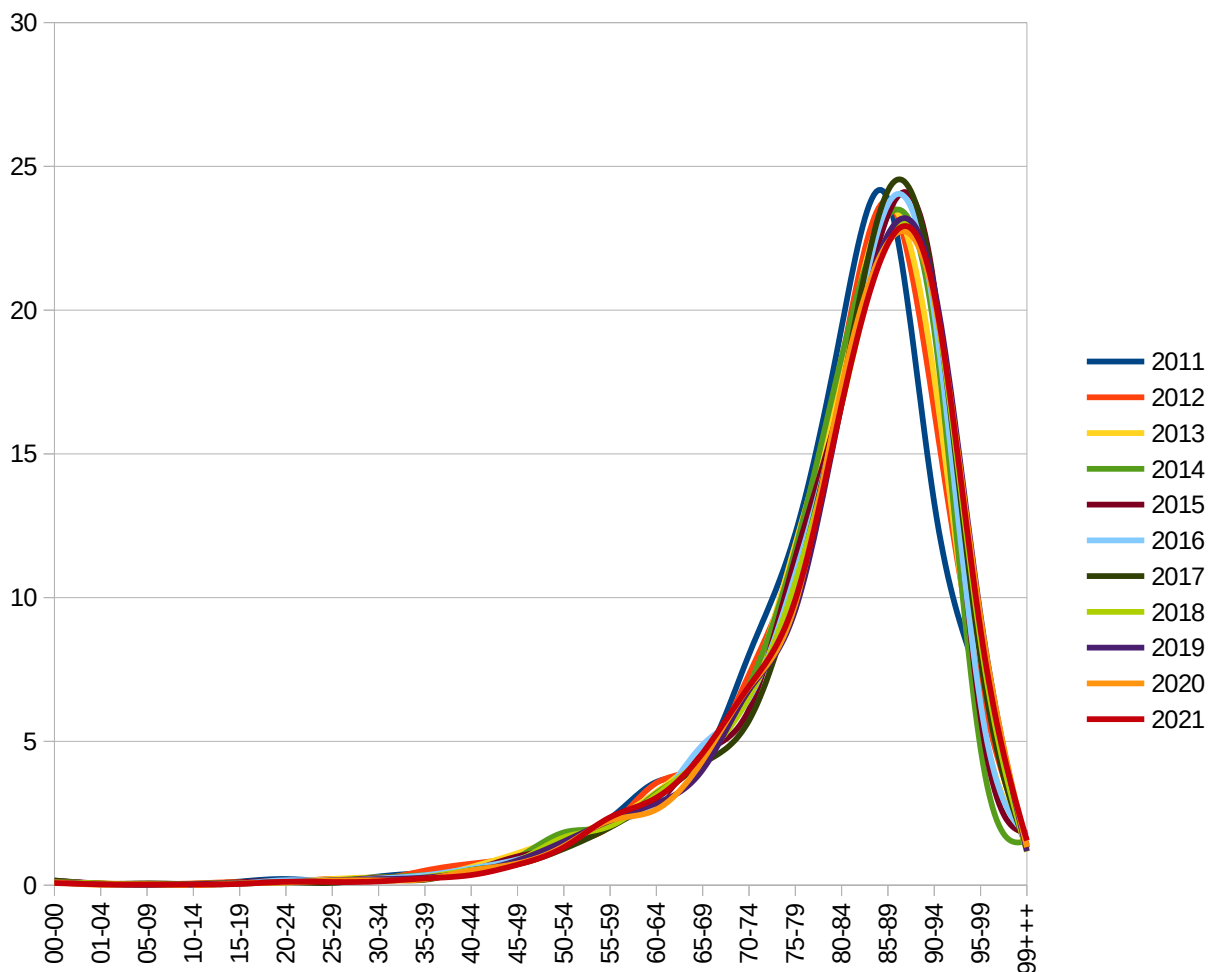


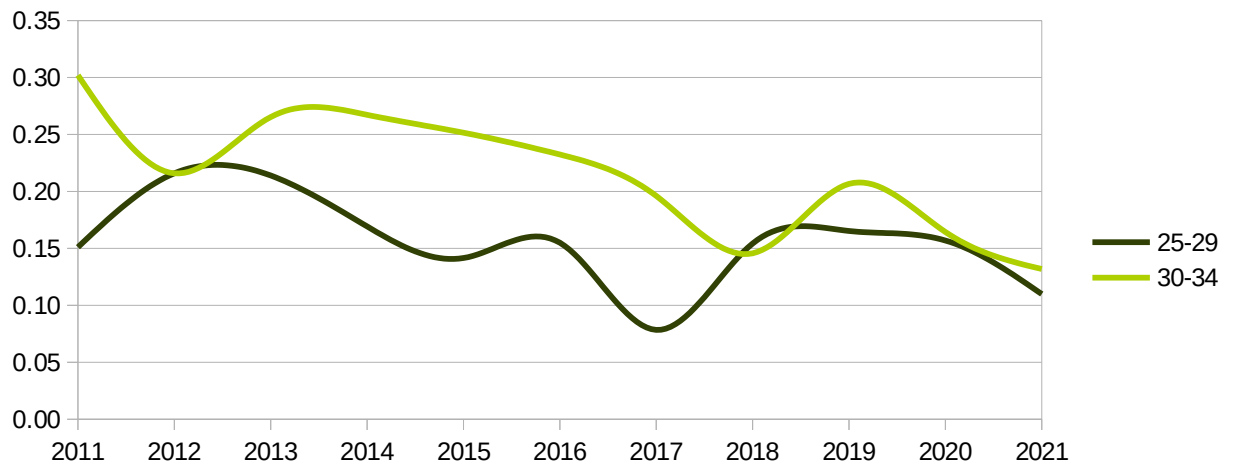
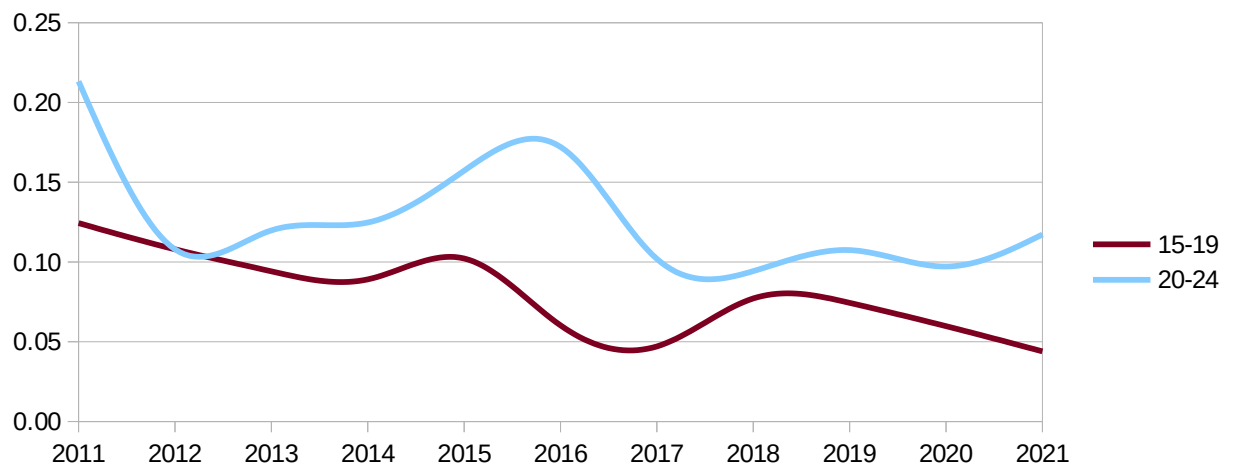
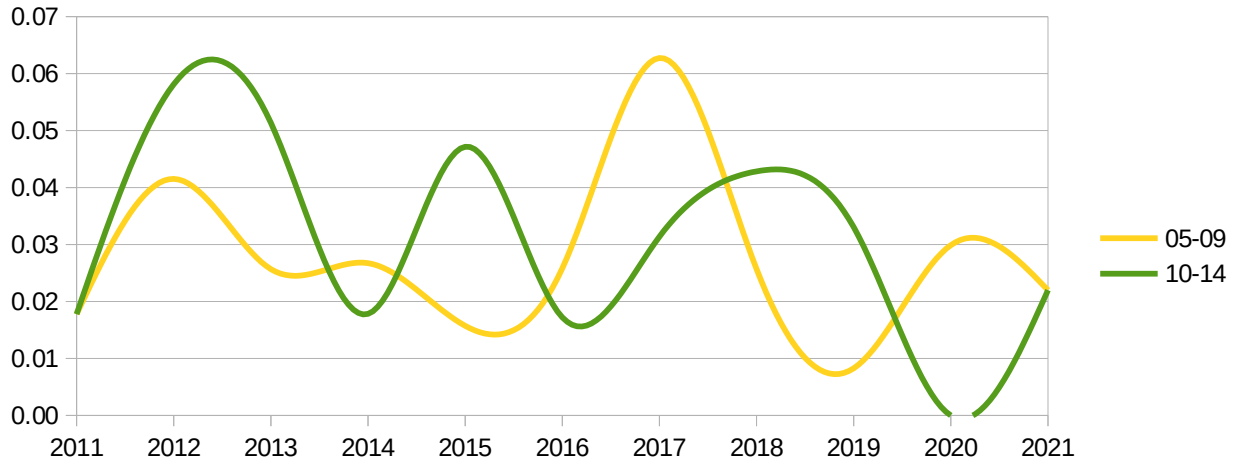
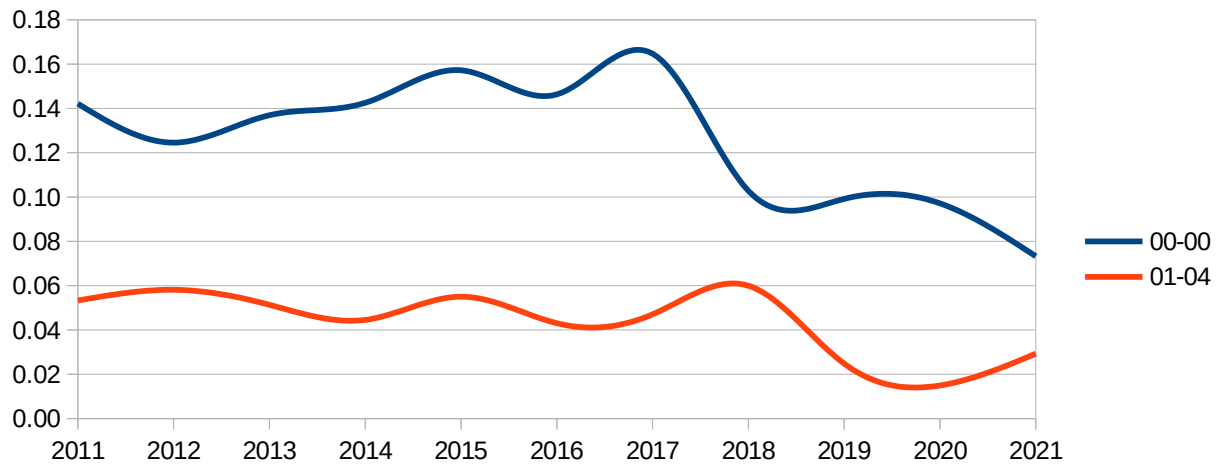
Regione marche  
 Provincia - all -  
 mese - multiple -

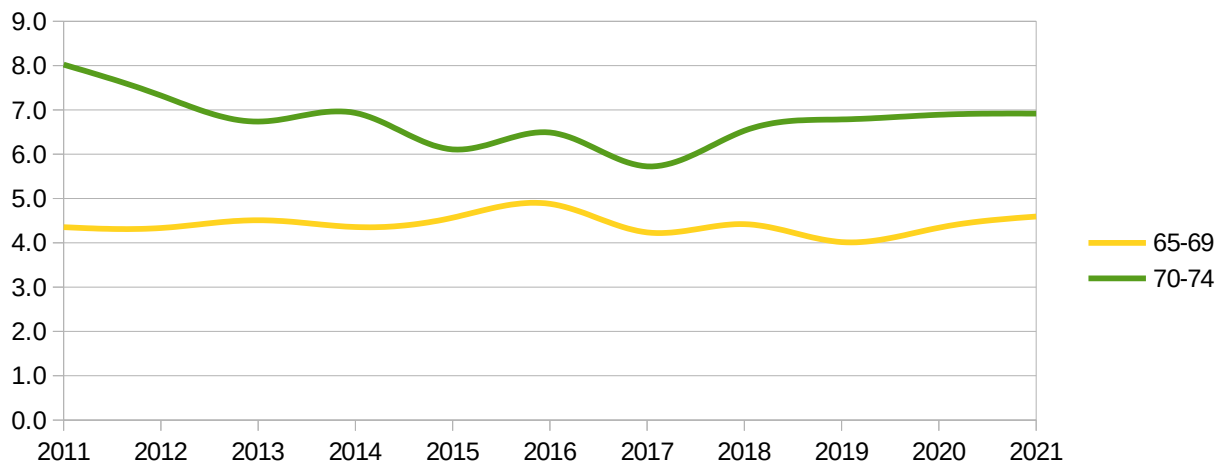
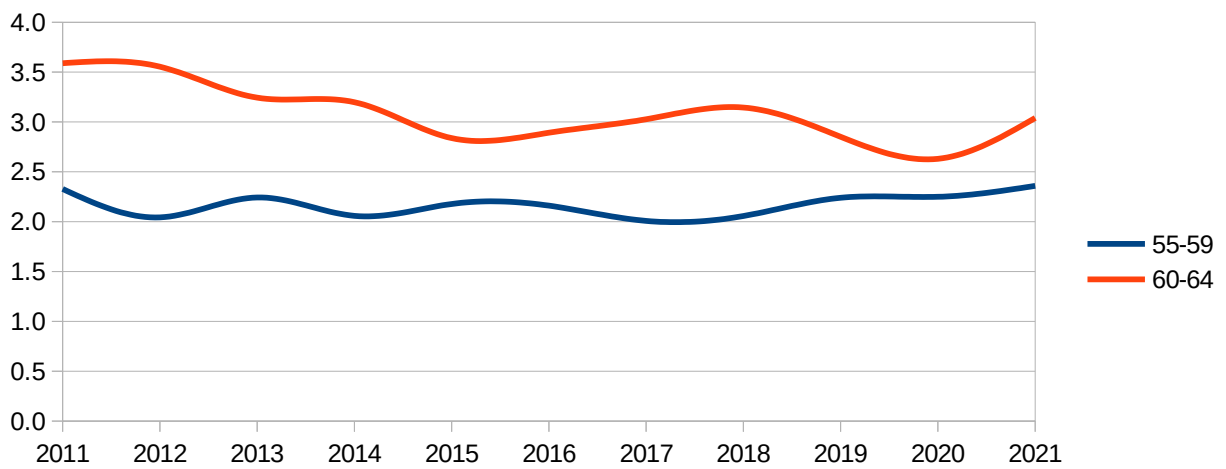
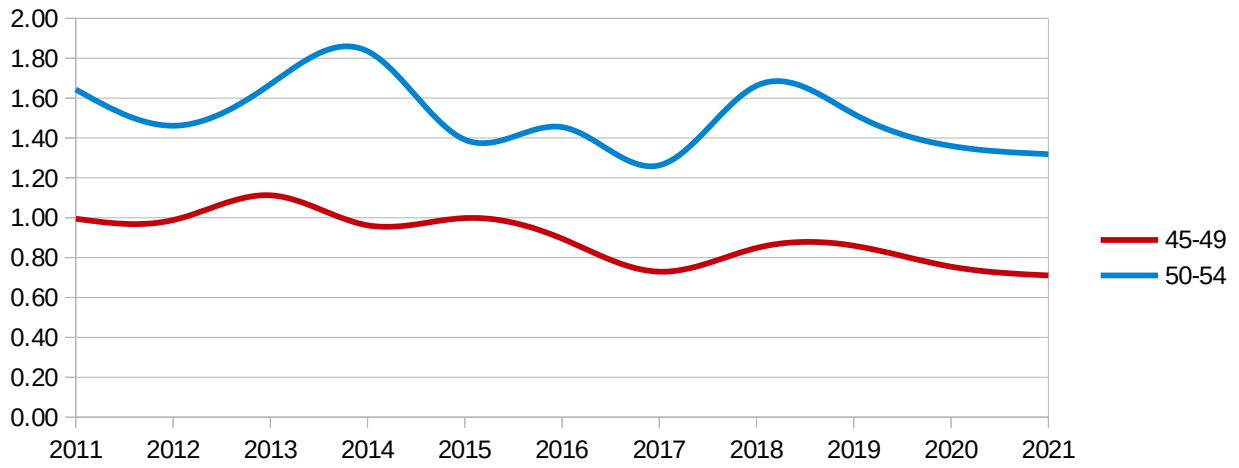
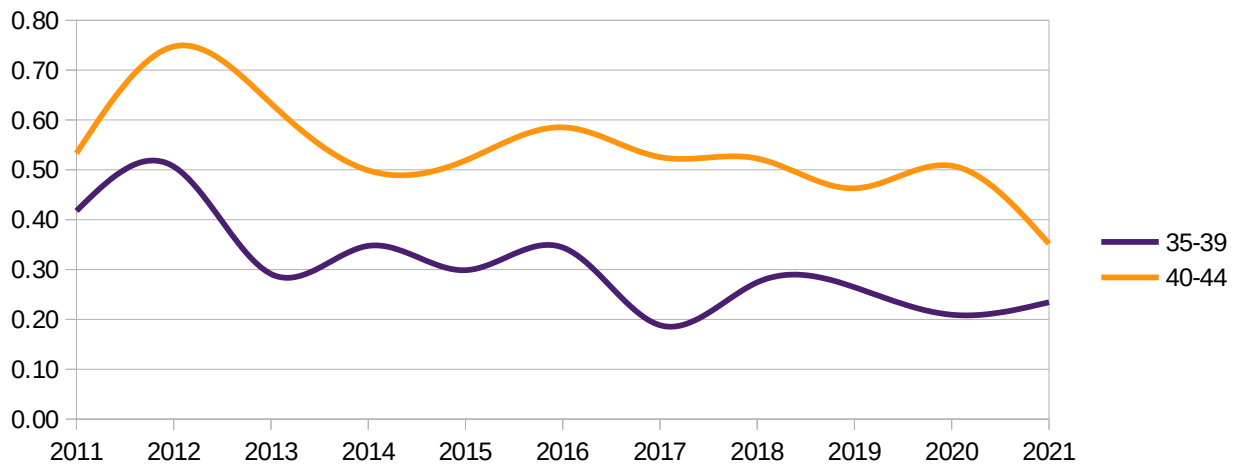
mesi gennaio → agosto  
 Dati ISTAT al 31 agosto 2021

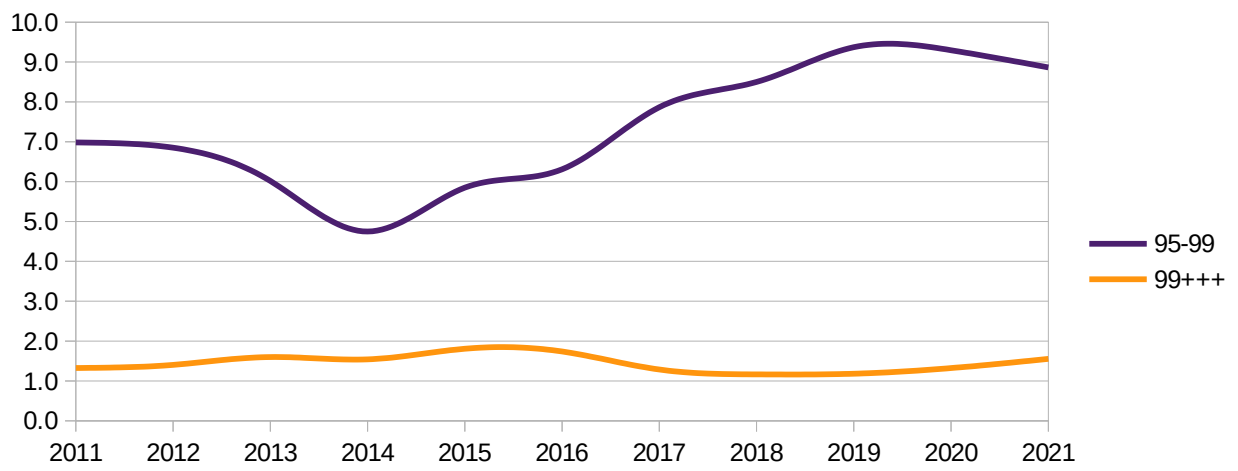
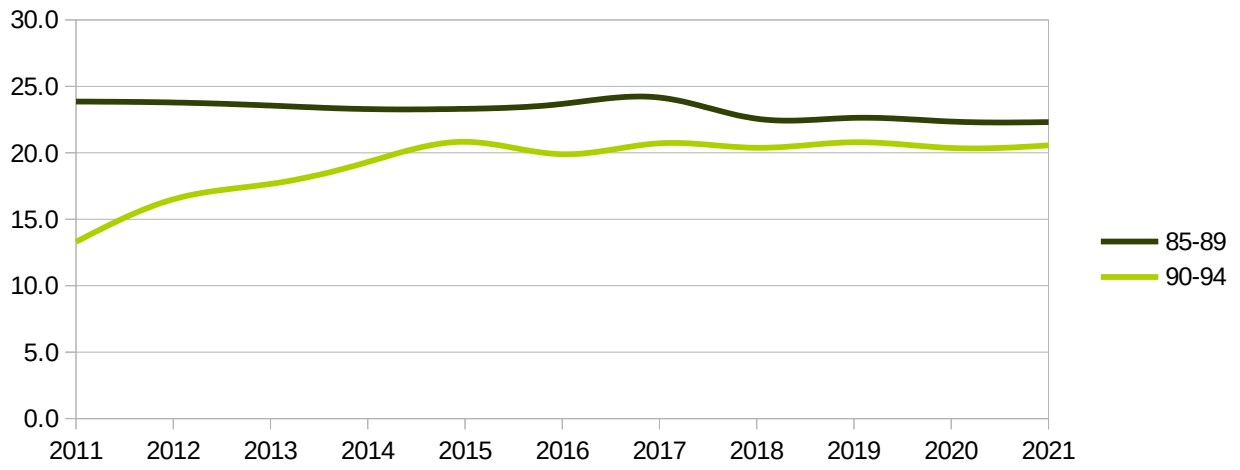
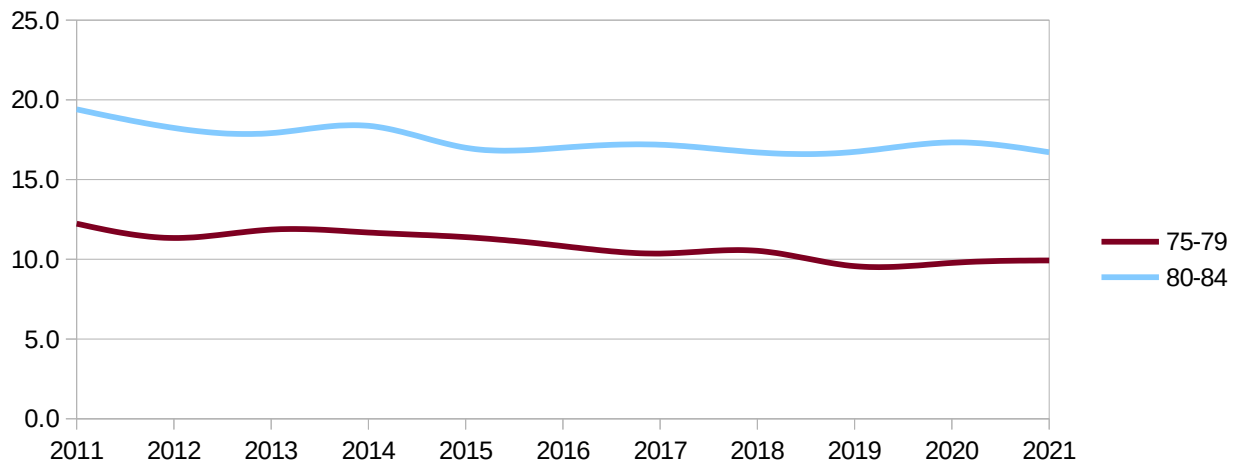
## Distribuzione decessi per fascia d'età

eta	2011	2012	2013	2014	2015	2016	2017	2018	2019	2020	2021
00-00	0.14	0.12	0.14	0.14	0.16	0.15	0.16	0.10	0.10	0.10	0.07
01-04	0.05	0.06	0.05	0.04	0.06	0.04	0.05	0.06	0.02	0.01	0.03
05-09	0.02	0.04	0.03	0.03	0.02	0.03	0.06	0.03	0.01	0.03	0.02
10-14	0.02	0.06	0.05	0.02	0.05	0.02	0.03	0.04	0.03	0.00	0.02
15-19	0.12	0.11	0.09	0.09	0.10	0.06	0.05	0.08	0.07	0.06	0.04
20-24	0.21	0.11	0.12	0.12	0.16	0.17	0.10	0.09	0.11	0.10	0.12
25-29	0.15	0.22	0.21	0.17	0.14	0.15	0.08	0.15	0.17	0.16	0.11
30-34	0.30	0.22	0.27	0.27	0.25	0.23	0.20	0.15	0.21	0.16	0.13
35-39	0.42	0.51	0.29	0.35	0.30	0.34	0.19	0.27	0.26	0.21	0.23
40-44	0.53	0.75	0.63	0.50	0.52	0.59	0.53	0.52	0.46	0.51	0.35
45-49	1.00	0.99	1.11	0.96	1.00	0.90	0.73	0.85	0.86	0.75	0.71
50-54	1.64	1.46	1.67	1.84	1.39	1.45	1.26	1.66	1.52	1.36	1.32
55-59	2.33	2.04	2.24	2.06	2.18	2.16	2.01	2.06	2.24	2.25	2.36
60-64	3.59	3.55	3.24	3.20	2.84	2.89	3.03	3.14	2.85	2.63	3.04
65-69	4.35	4.33	4.51	4.36	4.57	4.88	4.24	4.42	4.02	4.34	4.59
70-74	8.02	7.32	6.74	6.93	6.11	6.49	5.73	6.53	6.79	6.89	6.92
75-79	12.23	11.34	11.86	11.68	11.39	10.83	10.36	10.53	9.57	9.77	9.93
80-84	19.40	18.24	17.91	18.37	17.00	17.00	17.18	16.70	16.74	17.33	16.71
85-89	23.85	23.78	23.55	23.29	23.31	23.68	24.16	22.56	22.63	22.35	22.31
90-94	13.30	16.50	17.66	19.31	20.82	19.89	20.71	20.38	20.79	20.36	20.56
95-99	6.98	6.85	6.02	4.75	5.85	6.31	7.87	8.50	9.37	9.30	8.87
99+++	1.32	1.40	1.60	1.54	1.81	1.74	1.29	1.17	1.18	1.32	1.55







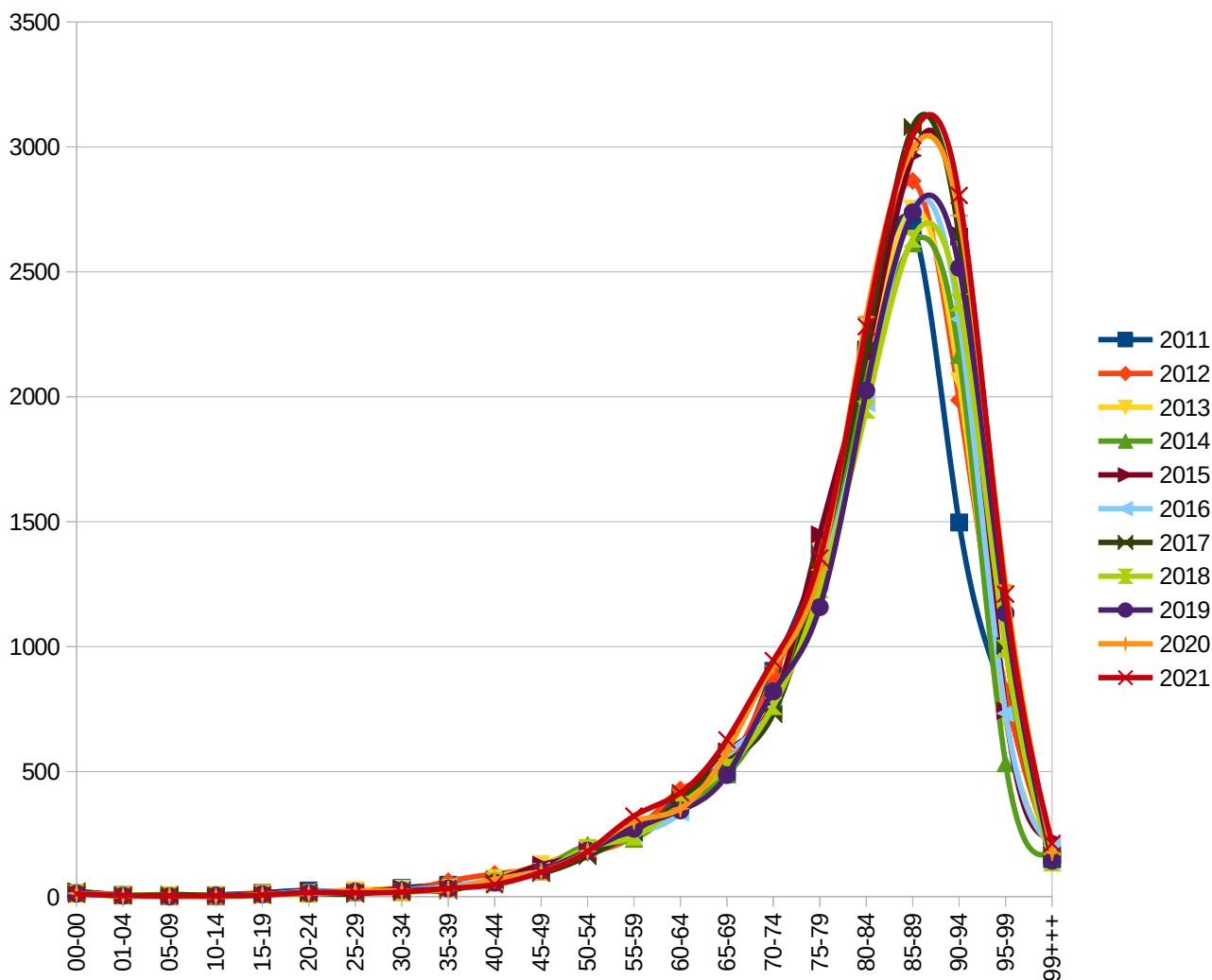


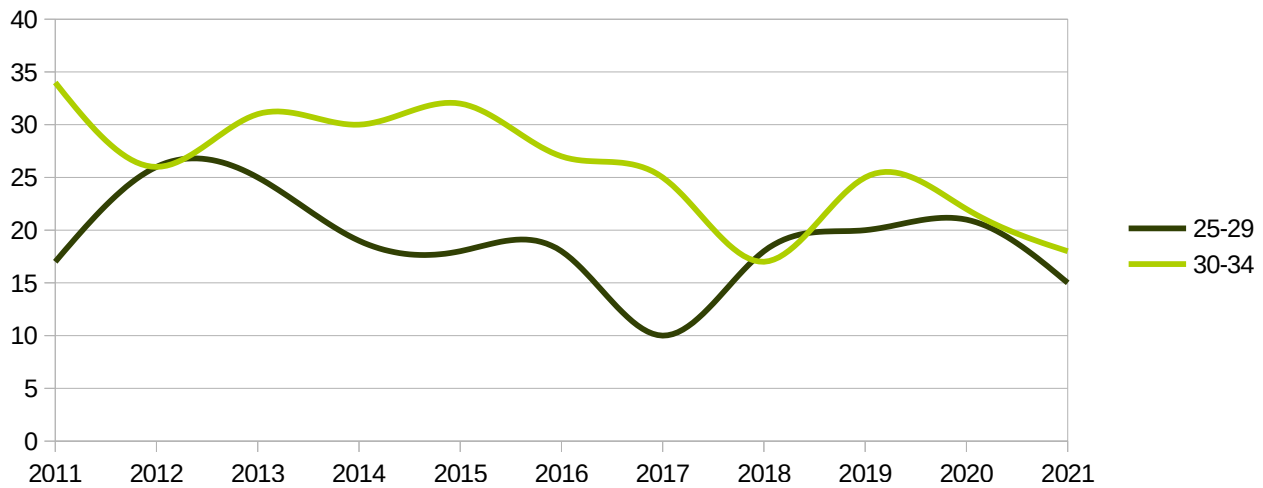
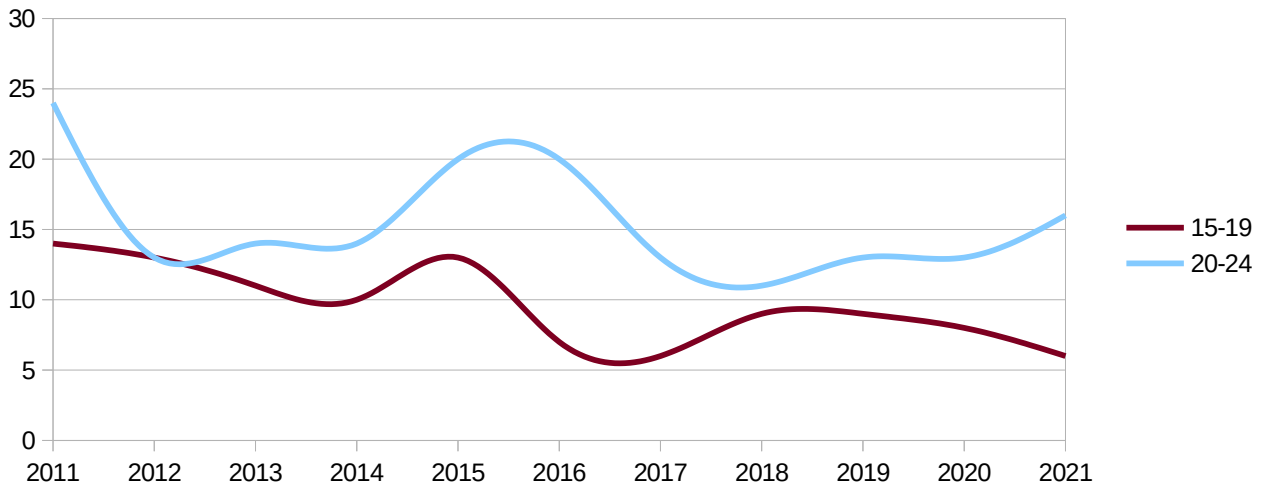
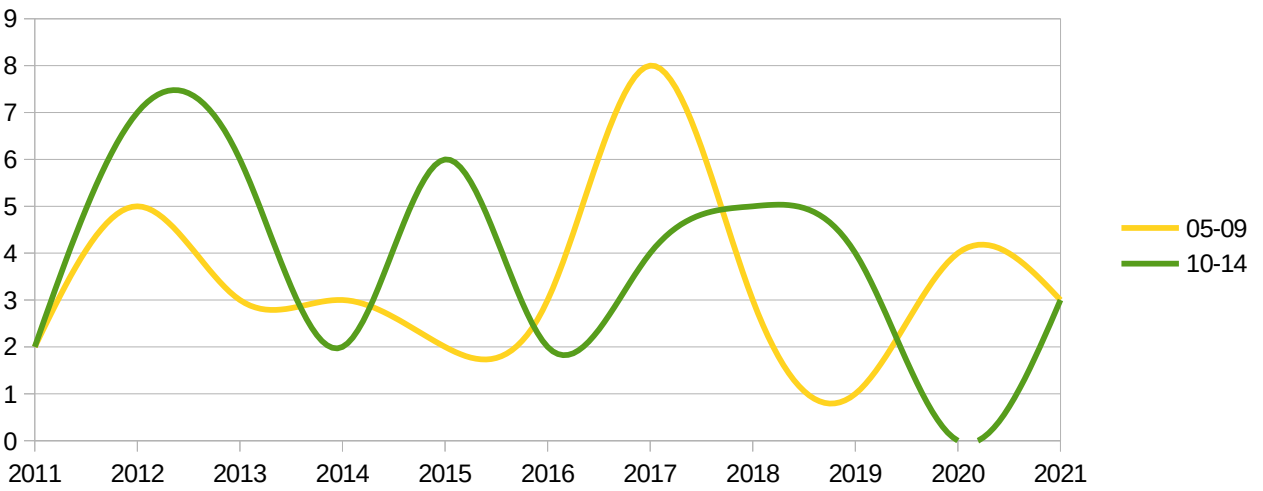
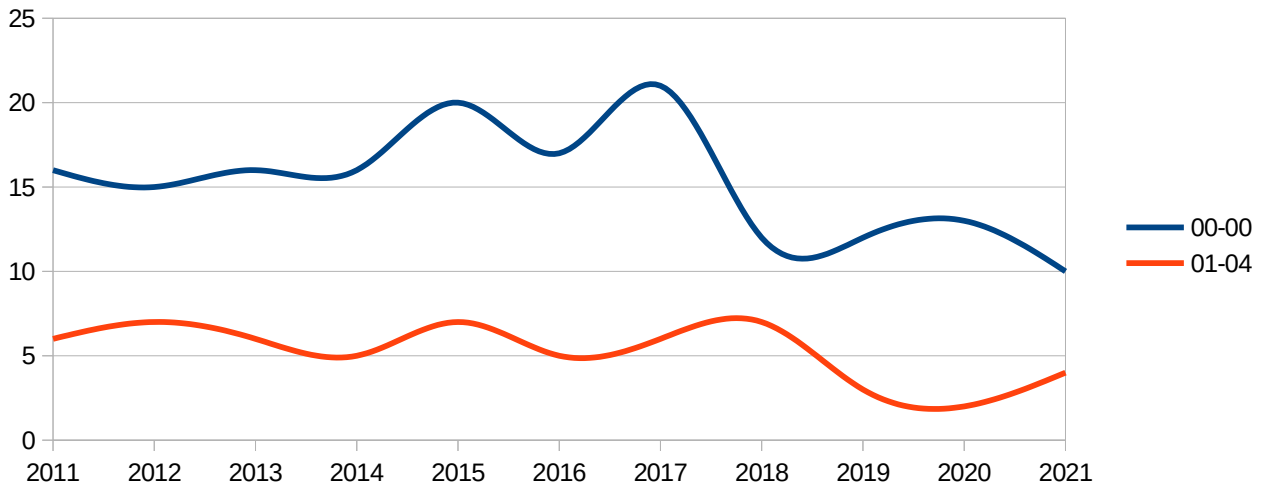
Regione marche  
 Provincia - all -  
 mese - multiple -

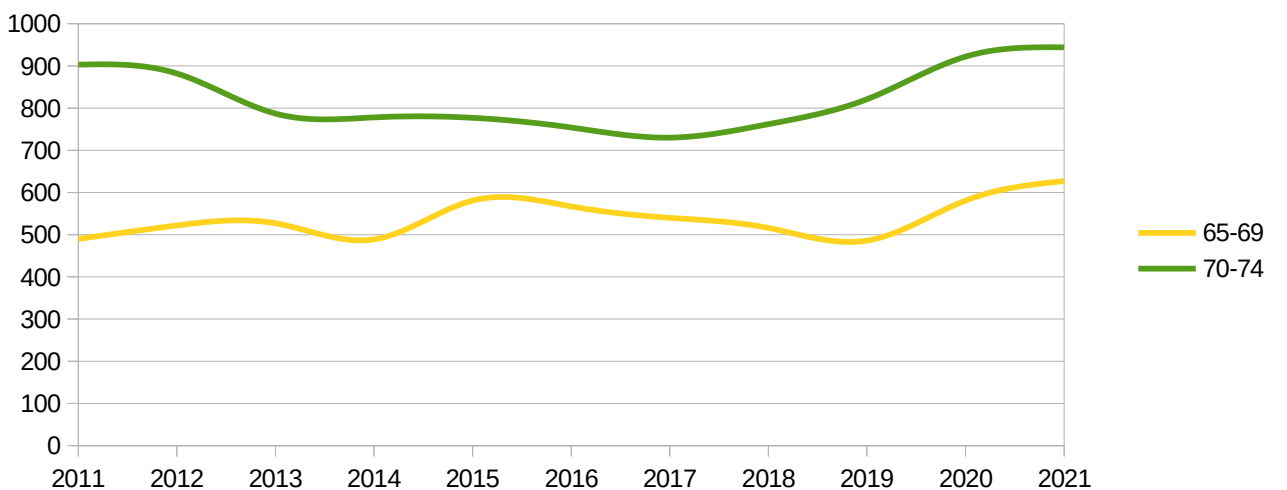
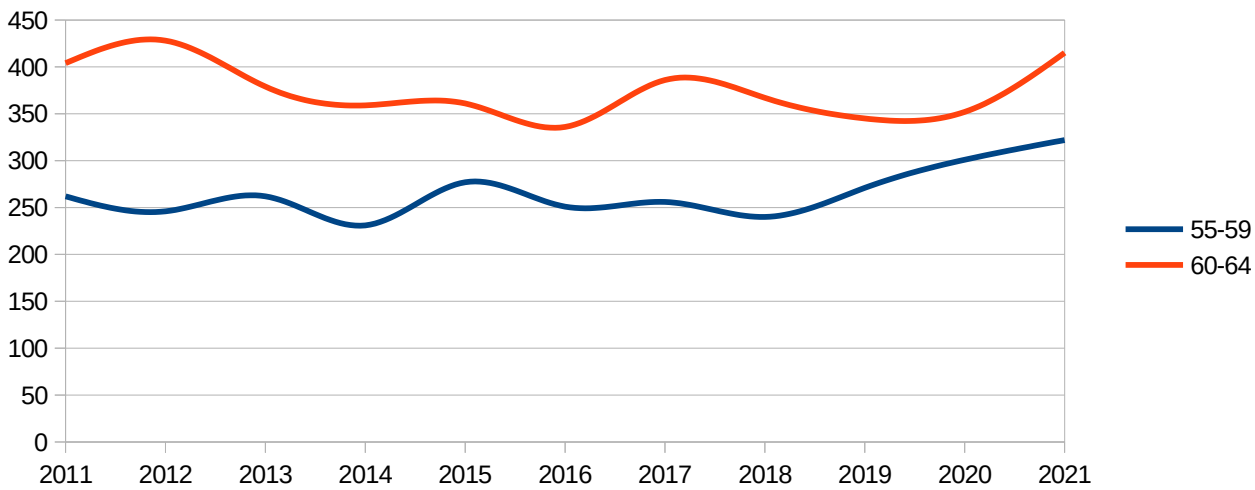
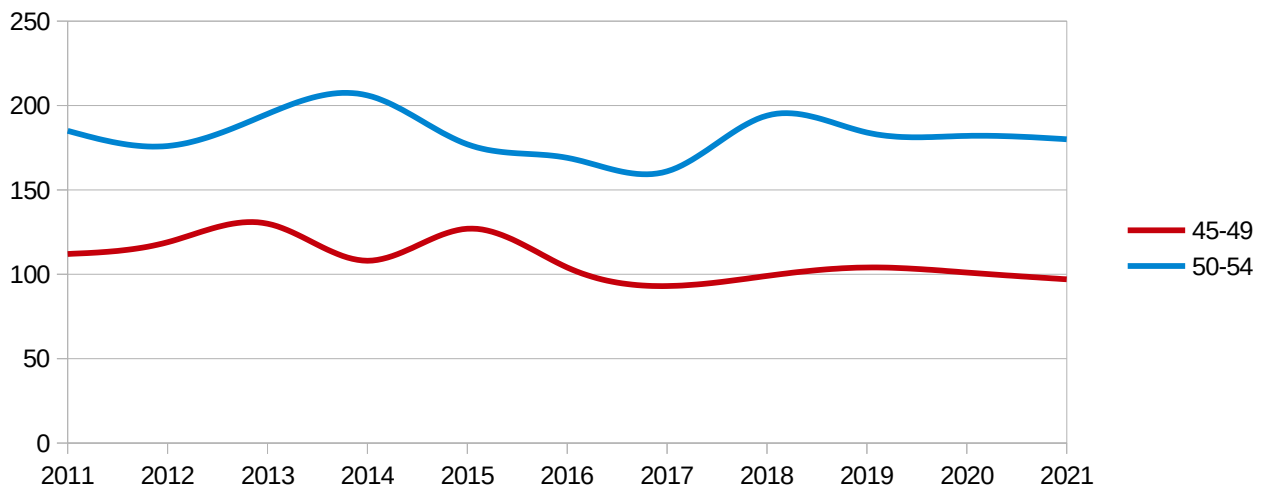
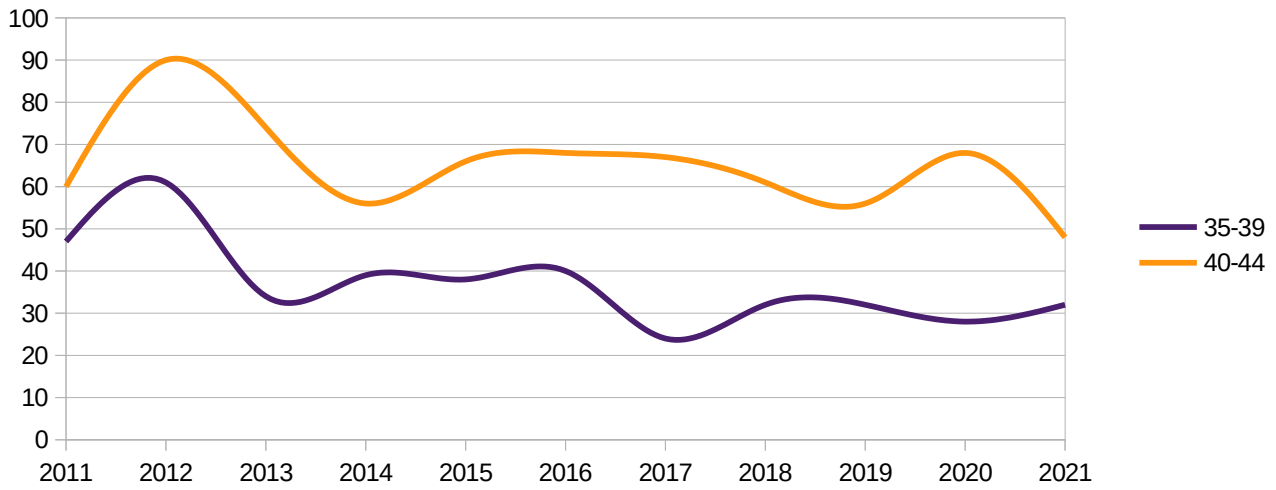
mesi gennaio → agosto  
 Dati ISTAT al 31 agosto 2021

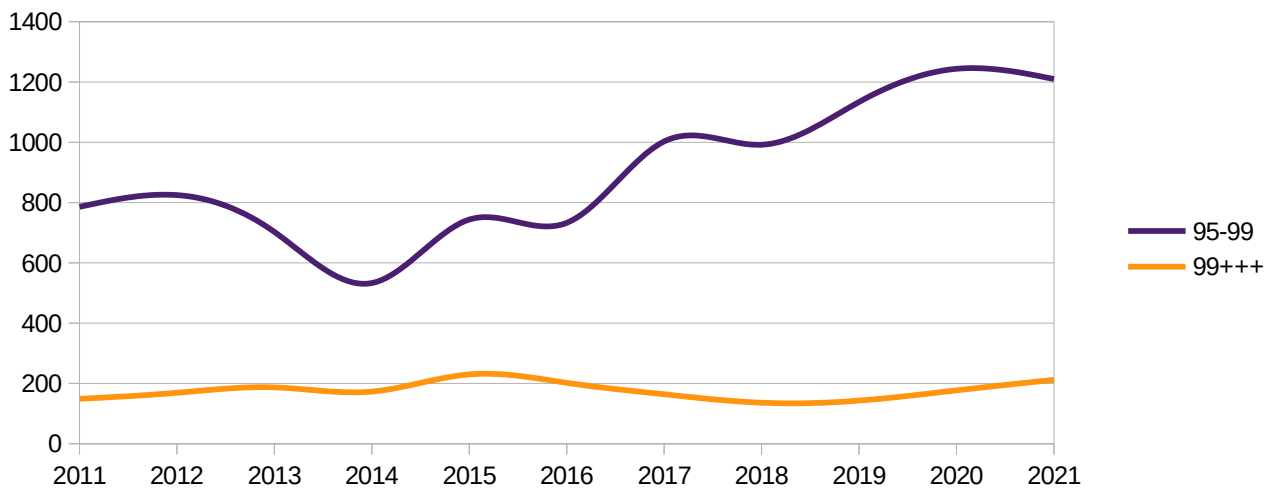
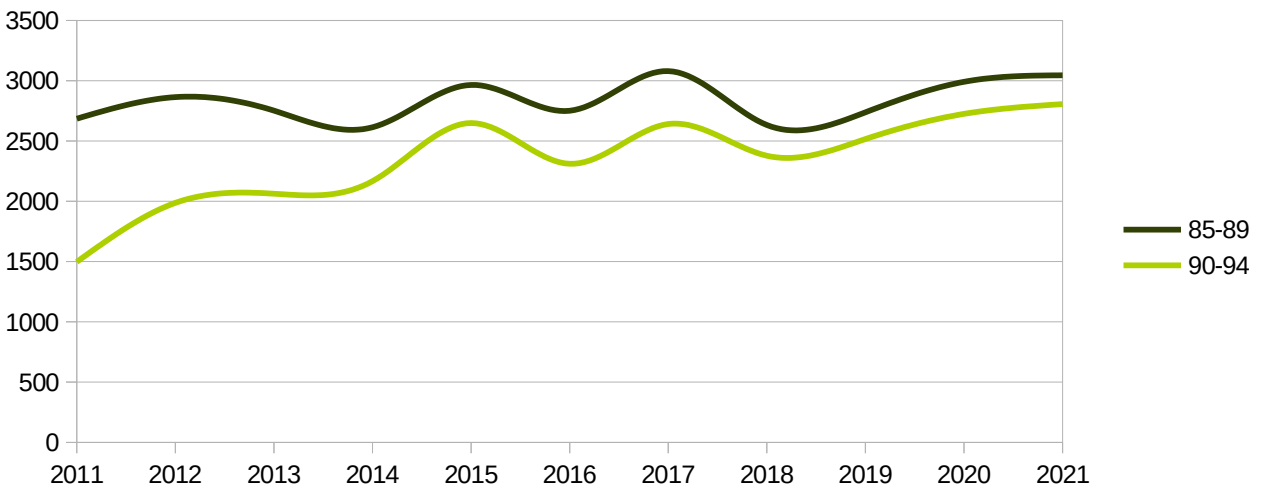
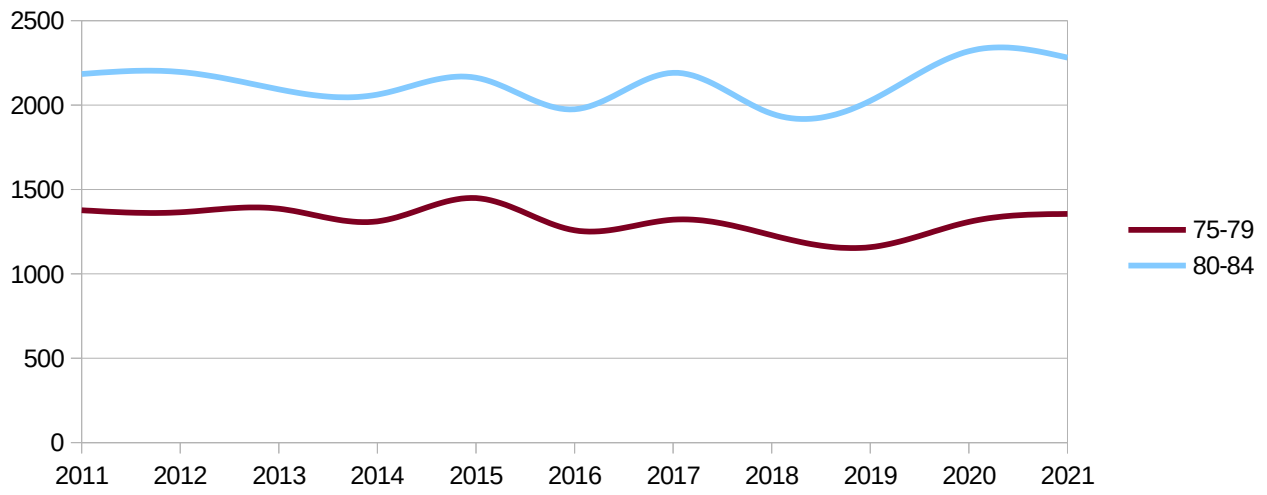
## Decessi per fascia d'età

eta	2011	2012	2013	2014	2015	2016	2017	2018	2019	2020	2021
00-00	16	15	16	16	20	17	21	12	12	13	10
01-04	6	7	6	5	7	5	6	7	3	2	4
05-09	2	5	3	3	2	3	8	3	1	4	3
10-14	2	7	6	2	6	2	4	5	4	0	3
15-19	14	13	11	10	13	7	6	9	9	8	6
20-24	24	13	14	14	20	20	13	11	13	13	16
25-29	17	26	25	19	18	18	10	18	20	21	15
30-34	34	26	31	30	32	27	25	17	25	22	18
35-39	47	61	34	39	38	40	24	32	32	28	32
40-44	60	90	74	56	66	68	67	61	56	68	48
45-49	112	119	130	108	127	104	93	99	104	101	97
50-54	185	176	195	206	177	169	161	194	184	182	180
55-59	262	246	262	231	277	251	256	240	271	301	322
60-64	404	428	379	359	361	336	386	367	345	352	415
65-69	490	522	527	489	581	567	540	516	486	581	627
70-74	903	882	787	778	777	754	730	762	821	922	944
75-79	1377	1365	1386	1311	1449	1258	1321	1229	1158	1308	1355
80-84	2184	2196	2093	2062	2162	1975	2191	1949	2025	2319	2281
85-89	2685	2864	2752	2614	2965	2751	3080	2633	2738	2991	3045
90-94	1497	1987	2063	2167	2649	2311	2641	2378	2516	2725	2806
95-99	786	825	703	533	744	733	1003	992	1134	1244	1210
99+++	149	169	187	173	230	202	164	136	143	177	212











Regione **marche**  
 Provincia **- all -**  
 mese **- multiple -**

mesi **gennaio → agosto**  
 Dati ISTAT al **31 agosto 2021**

### Confronto MIN(2011-2019), 2020, 2021, MAX(2011-2019)

eta	MIN	2020	2021	MAX
00-00	12	13	10	21
01-04	3	2	4	7
05-09	1	4	3	8
10-14	2	0	3	7
15-19	6	8	6	14
20-24	11	13	16	24
25-29	10	21	15	26
30-34	17	22	18	34
35-39	24	28	32	61
40-44	56	68	48	90
45-49	93	101	97	130
50-54	161	182	180	206
55-59	231	301	322	277
60-64	336	352	415	428
65-69	486	581	627	581
70-74	730	922	944	903
75-79	1158	1308	1355	1449
80-84	1949	2319	2281	2196
85-89	2614	2991	3045	3080
90-94	1497	2725	2806	2649
95-99	533	1244	1210	1134
99+++	136	177	212	230

