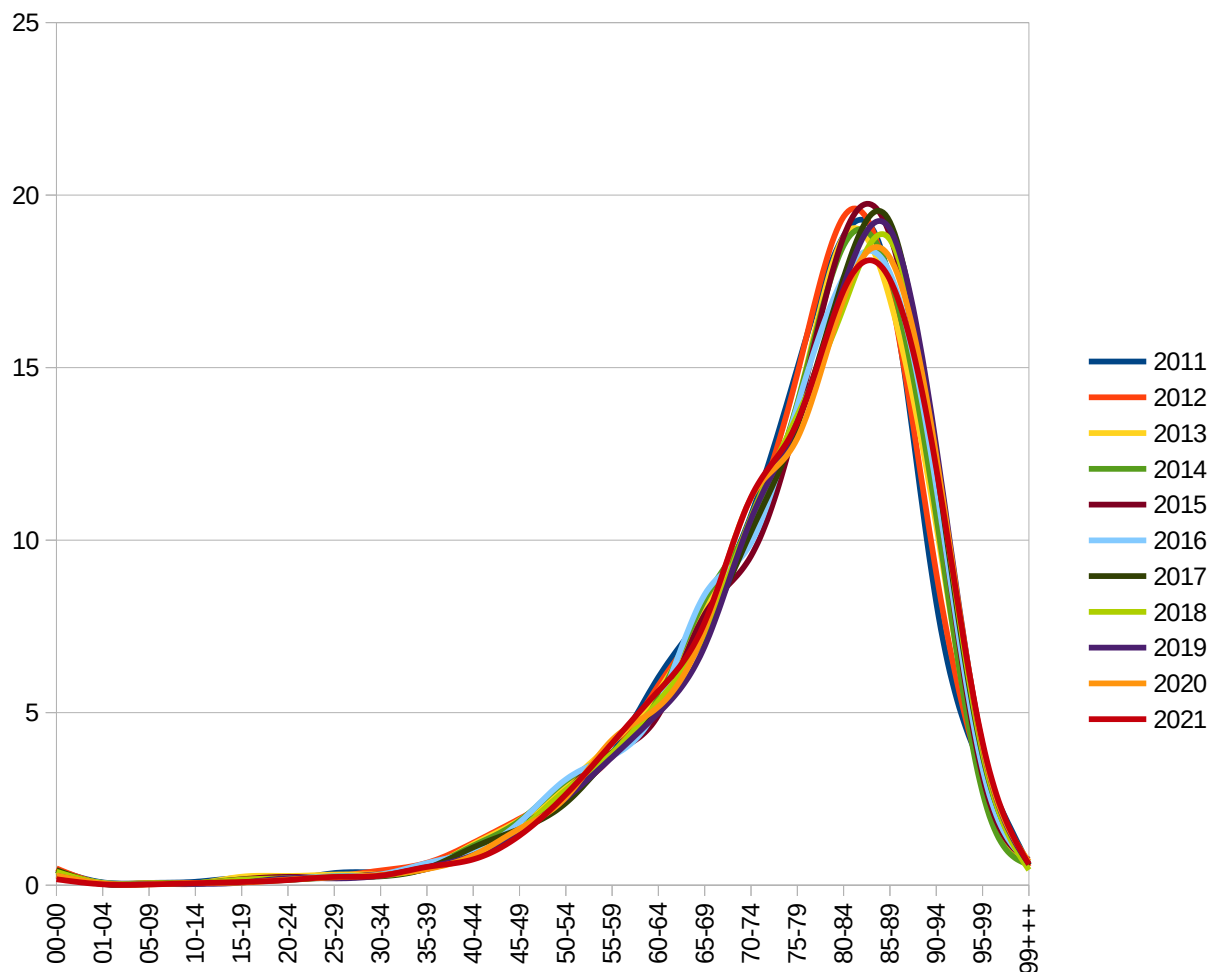


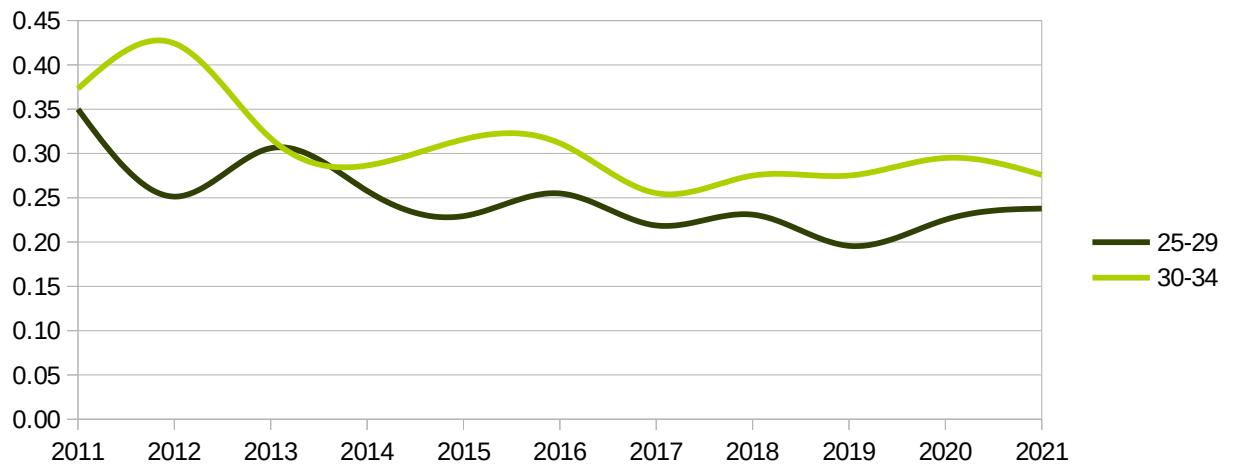
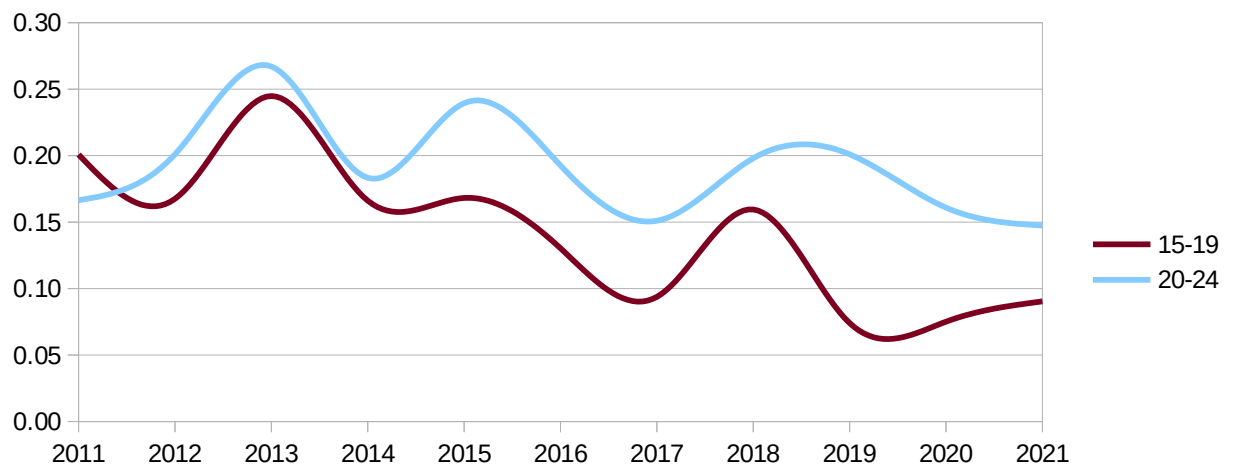
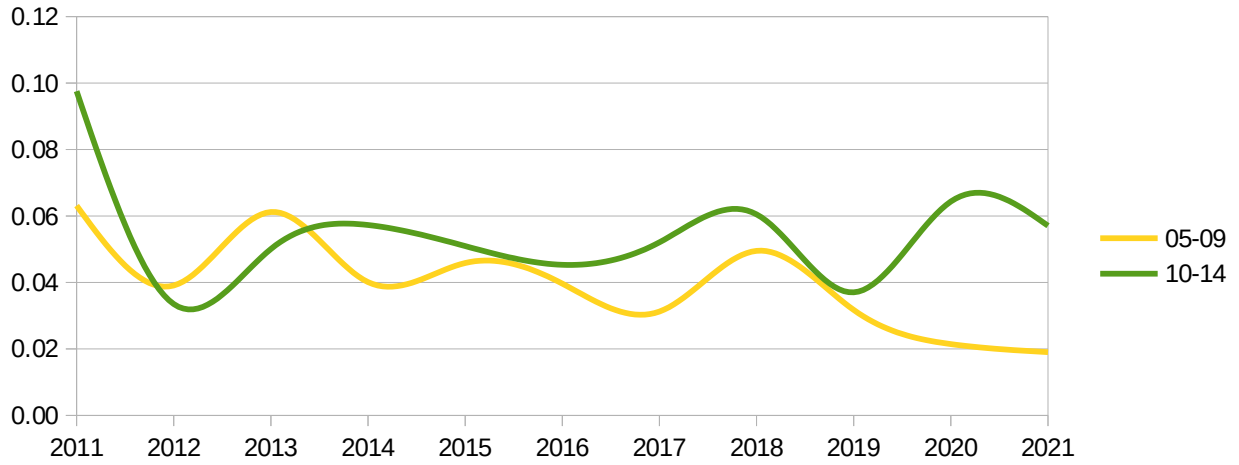
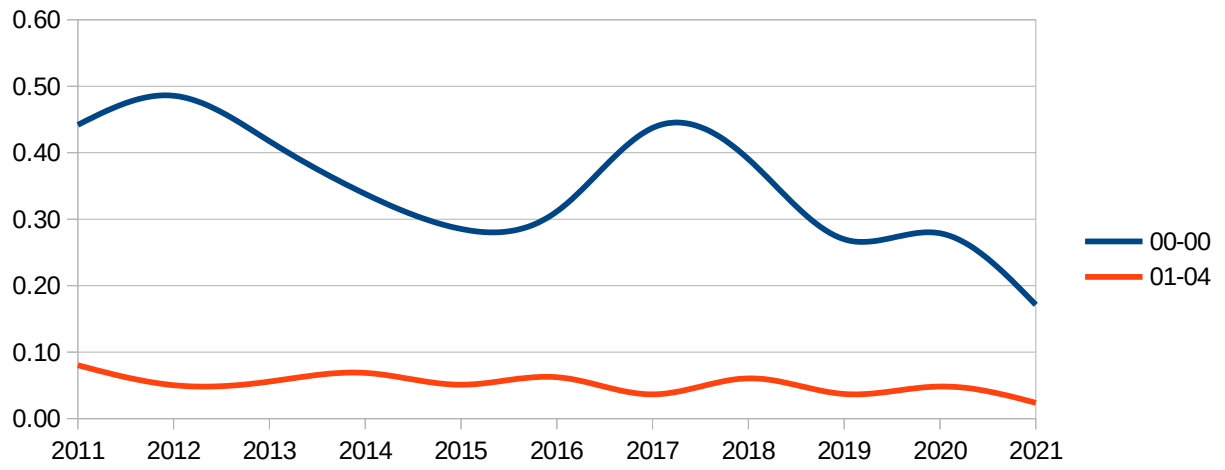
Regione - all -
 Provincia napoli
 mese - multiple -

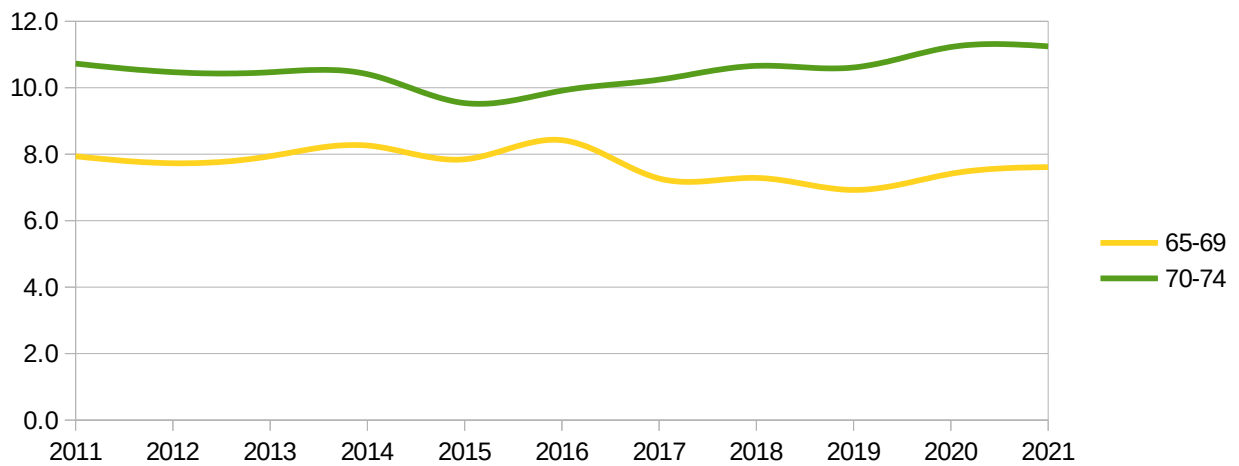
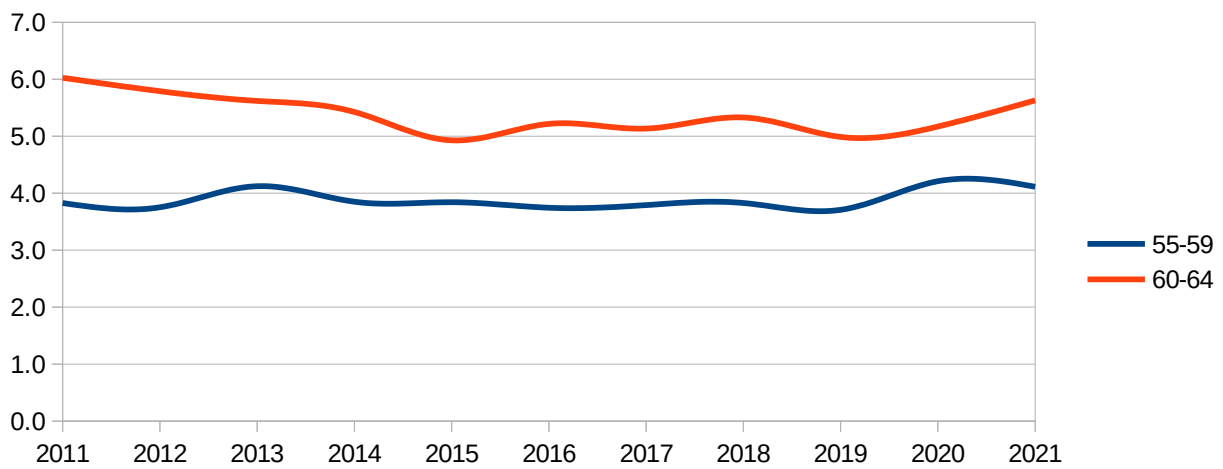
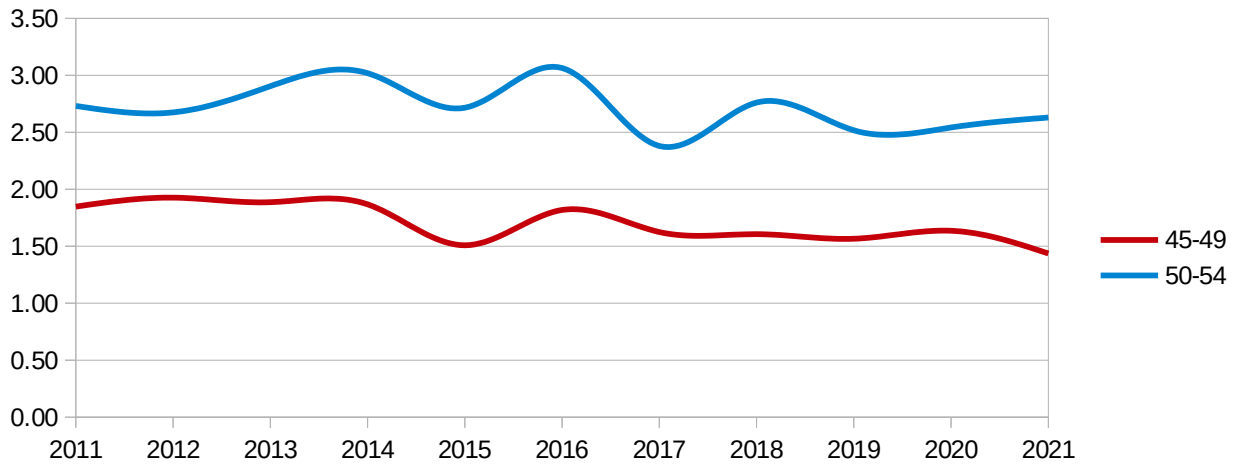
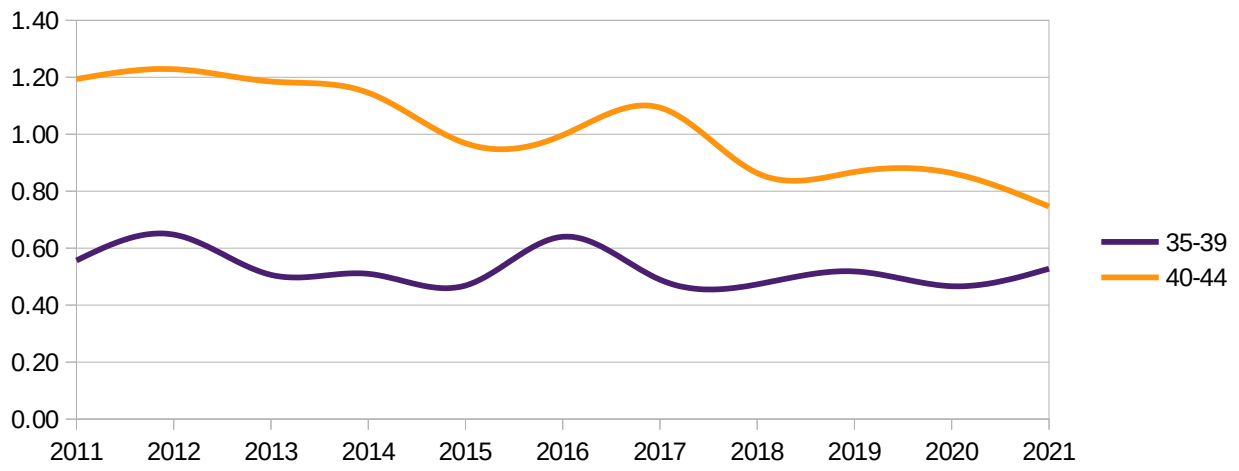
mesi gennaio → agosto
 Dati ISTAT al 31 agosto 2021

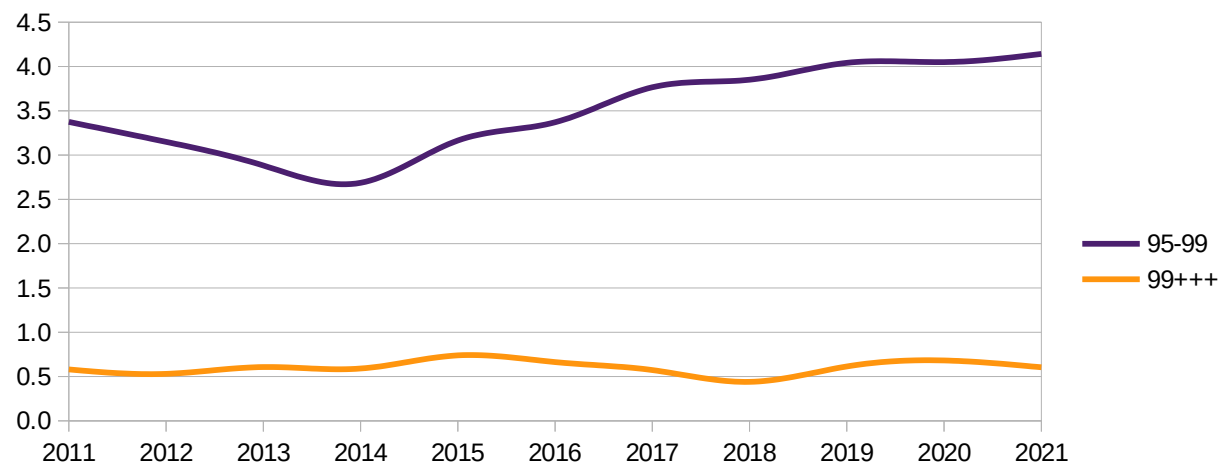
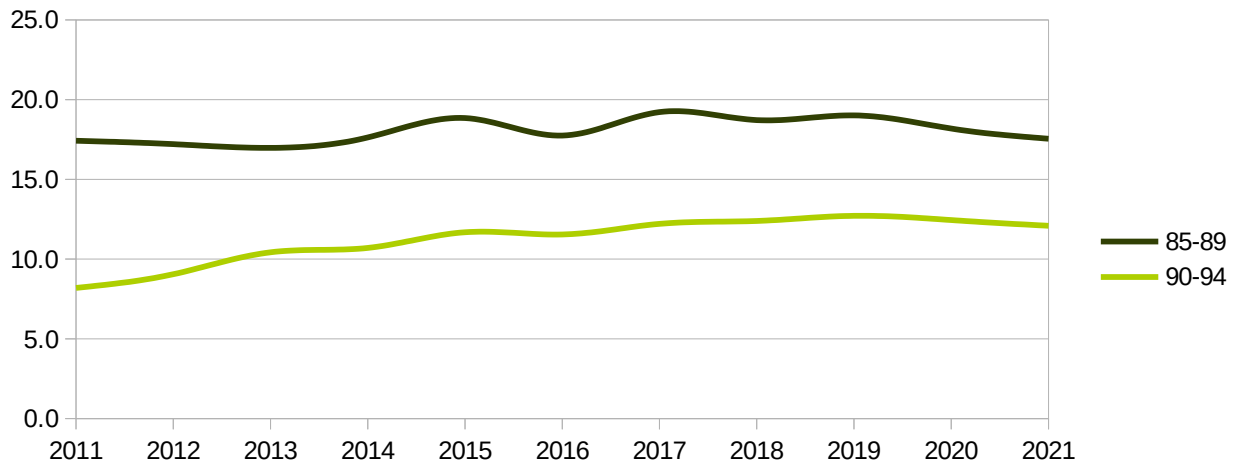
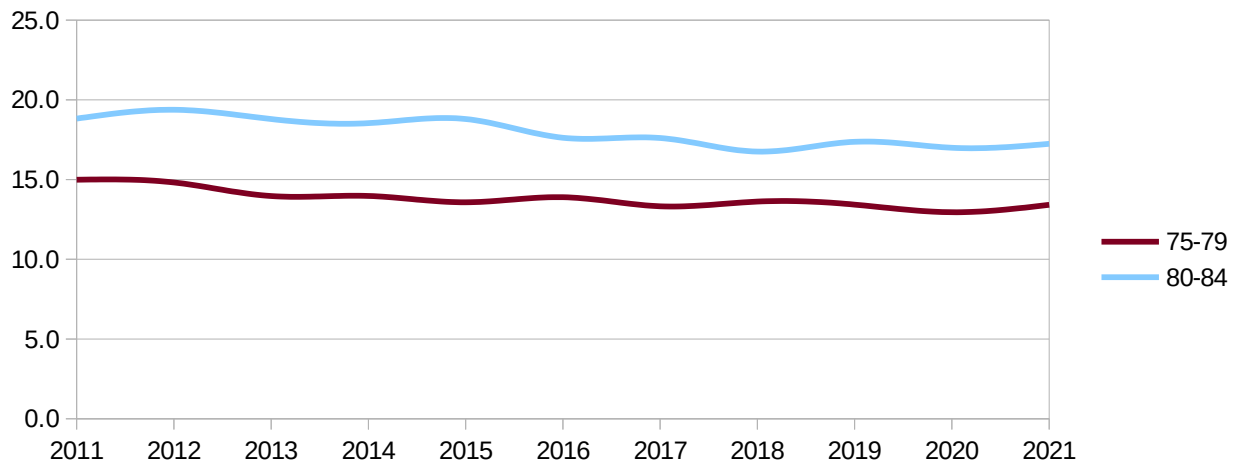
Distribuzione decessi per fascia d'età

eta	2011	2012	2013	2014	2015	2016	2017	2018	2019	2020	2021
00-00	0.44	0.49	0.42	0.34	0.29	0.31	0.44	0.39	0.27	0.28	0.17
01-04	0.08	0.05	0.06	0.07	0.05	0.06	0.04	0.06	0.04	0.05	0.02
05-09	0.06	0.04	0.06	0.04	0.05	0.04	0.03	0.05	0.03	0.02	0.02
10-14	0.10	0.03	0.05	0.06	0.05	0.05	0.05	0.06	0.04	0.06	0.06
15-19	0.20	0.17	0.24	0.17	0.17	0.13	0.09	0.16	0.07	0.08	0.09
20-24	0.17	0.20	0.27	0.18	0.24	0.19	0.15	0.20	0.20	0.16	0.15
25-29	0.35	0.25	0.31	0.26	0.23	0.25	0.22	0.23	0.20	0.23	0.24
30-34	0.37	0.42	0.32	0.29	0.32	0.31	0.26	0.27	0.28	0.29	0.28
35-39	0.56	0.65	0.51	0.51	0.47	0.64	0.49	0.47	0.52	0.47	0.53
40-44	1.19	1.23	1.19	1.15	0.97	1.00	1.09	0.86	0.87	0.86	0.75
45-49	1.85	1.93	1.89	1.87	1.51	1.82	1.62	1.61	1.57	1.64	1.44
50-54	2.73	2.67	2.90	3.02	2.72	3.06	2.38	2.76	2.52	2.54	2.63
55-59	3.83	3.75	4.12	3.85	3.84	3.74	3.79	3.83	3.71	4.21	4.11
60-64	6.03	5.79	5.62	5.43	4.93	5.22	5.13	5.33	4.99	5.17	5.63
65-69	7.94	7.73	7.94	8.26	7.85	8.42	7.27	7.29	6.92	7.41	7.61
70-74	10.73	10.47	10.47	10.41	9.54	9.91	10.24	10.66	10.61	11.22	11.24
75-79	14.99	14.82	13.97	13.97	13.57	13.89	13.33	13.62	13.43	12.95	13.42
80-84	18.82	19.37	18.79	18.54	18.80	17.62	17.61	16.75	17.37	16.99	17.24
85-89	17.42	17.21	16.98	17.63	18.84	17.75	19.22	18.72	19.01	18.19	17.55
90-94	8.19	9.05	10.43	10.70	11.68	11.54	12.21	12.39	12.71	12.45	12.09
95-99	3.37	3.15	2.88	2.69	3.16	3.37	3.76	3.85	4.04	4.05	4.14
99+++	0.58	0.53	0.61	0.59	0.74	0.66	0.57	0.44	0.61	0.68	0.60







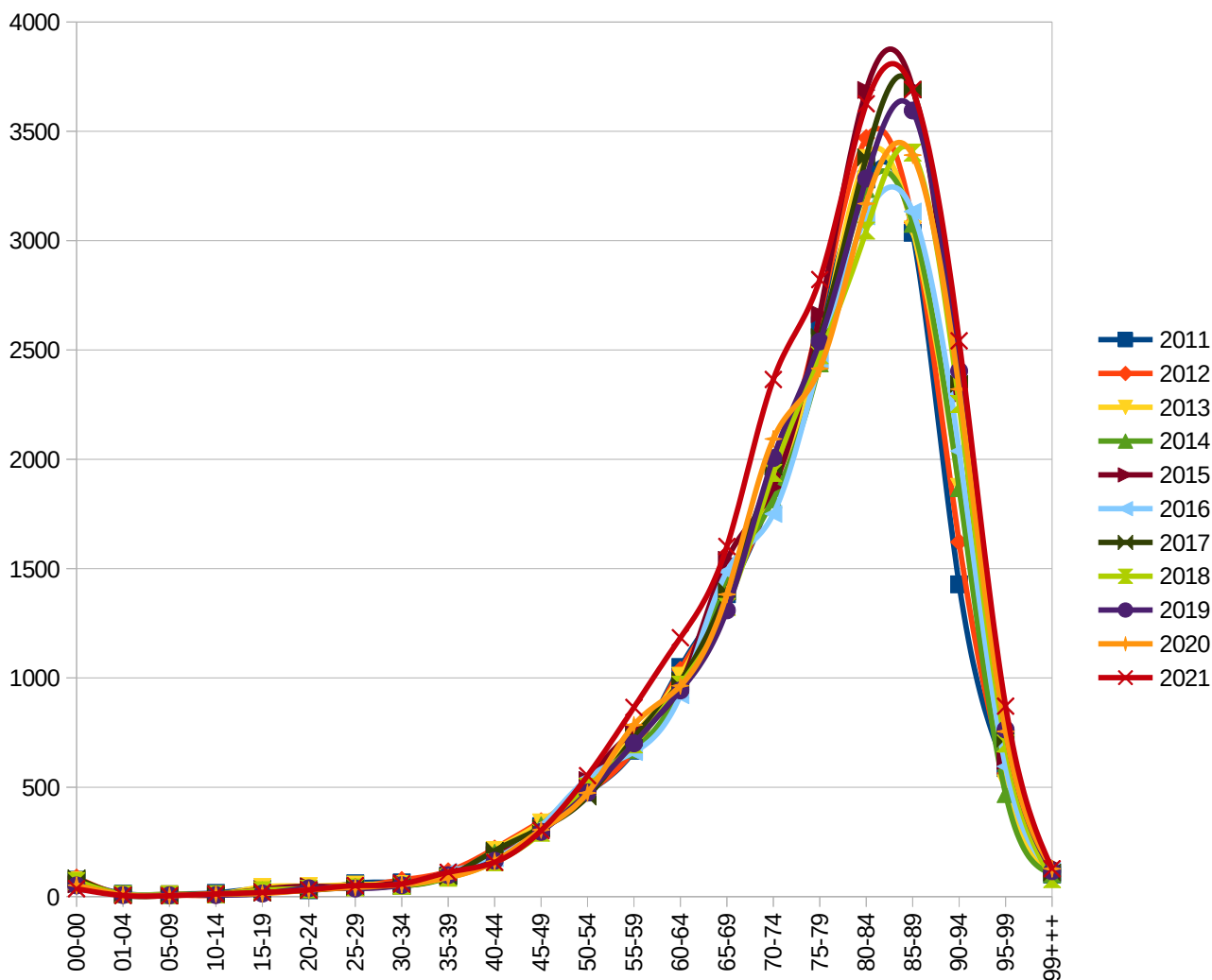


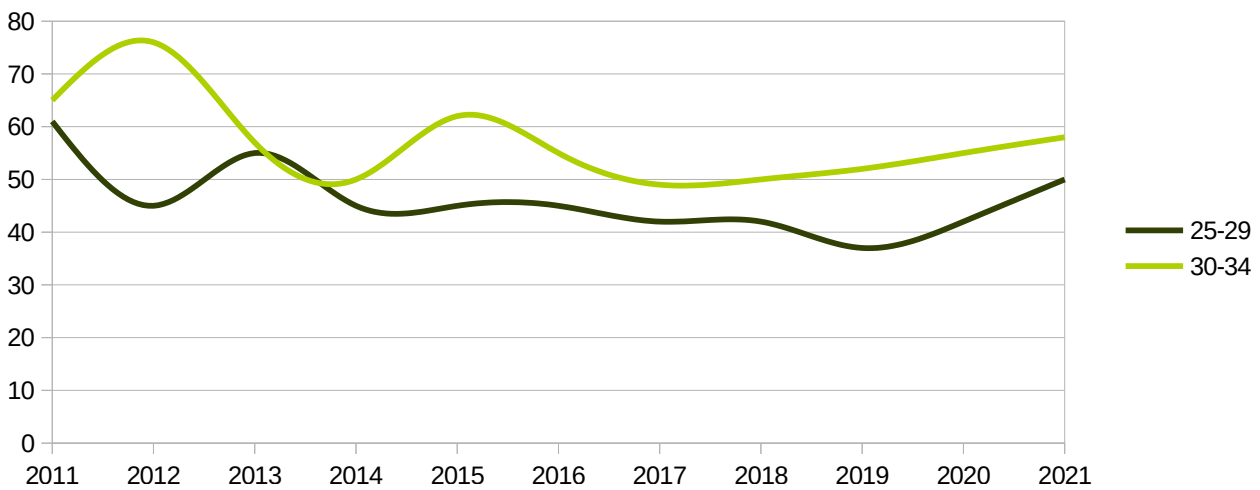
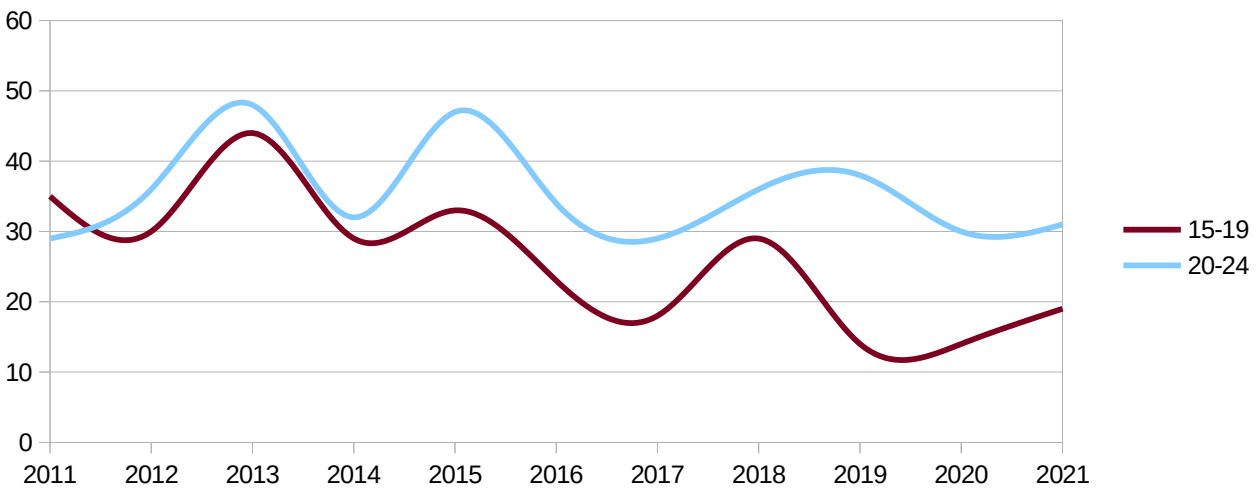
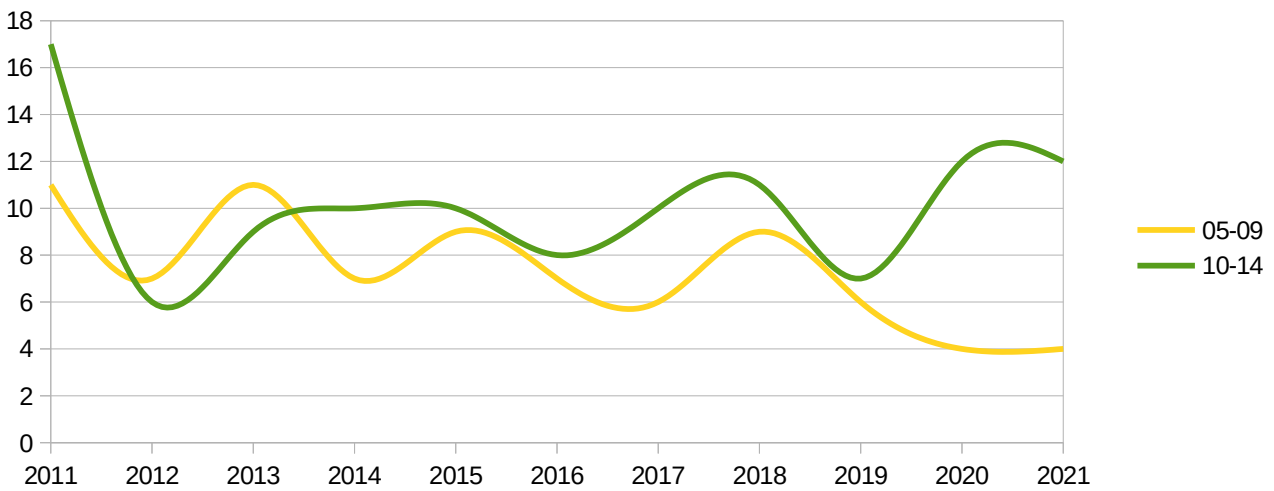
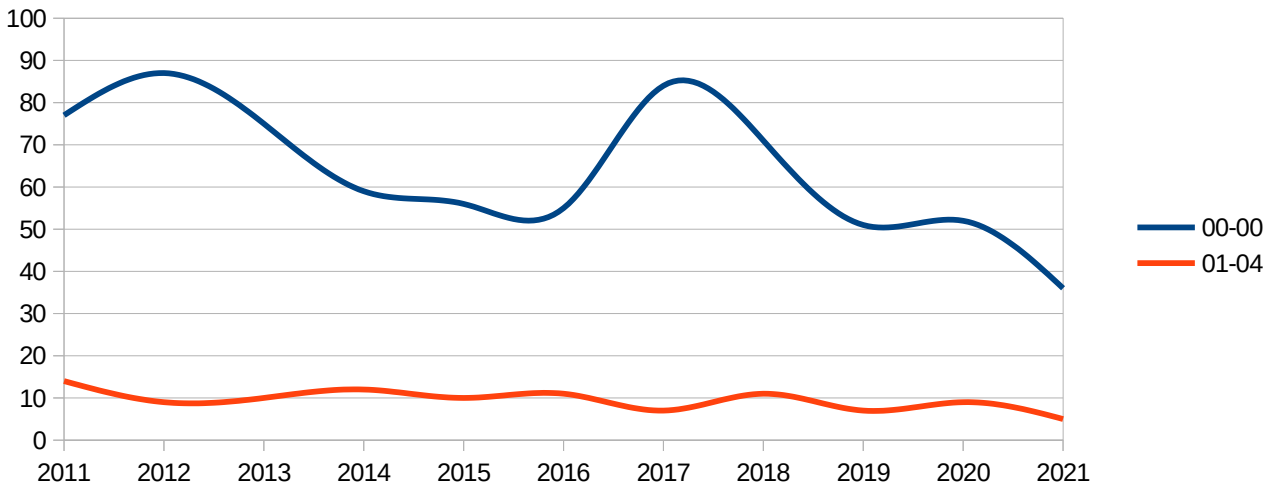
Regione - all -
 Provincia napoli
 mese - multiple -

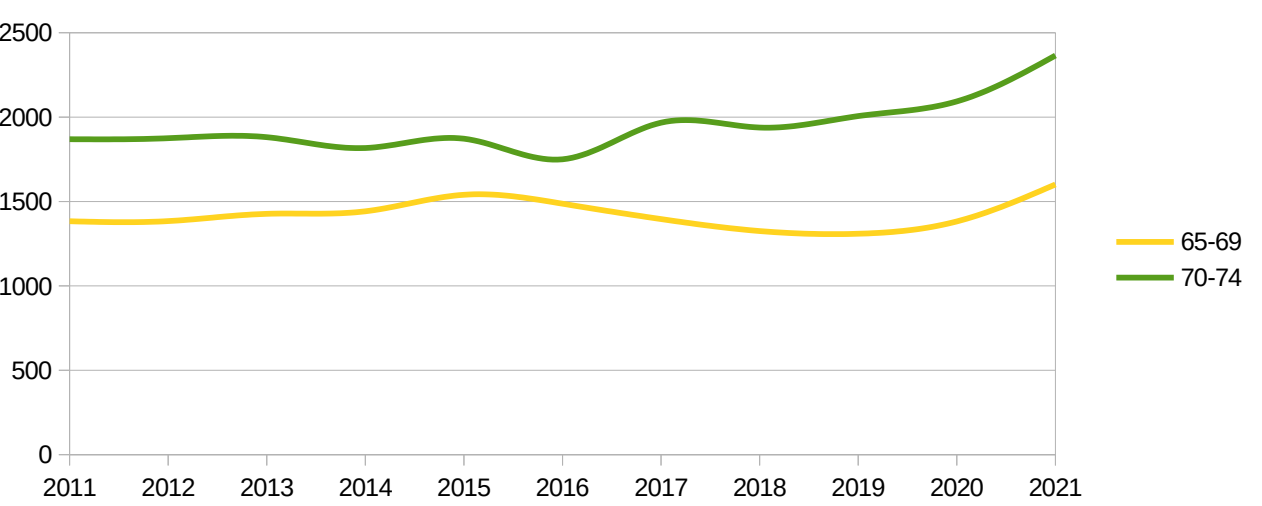
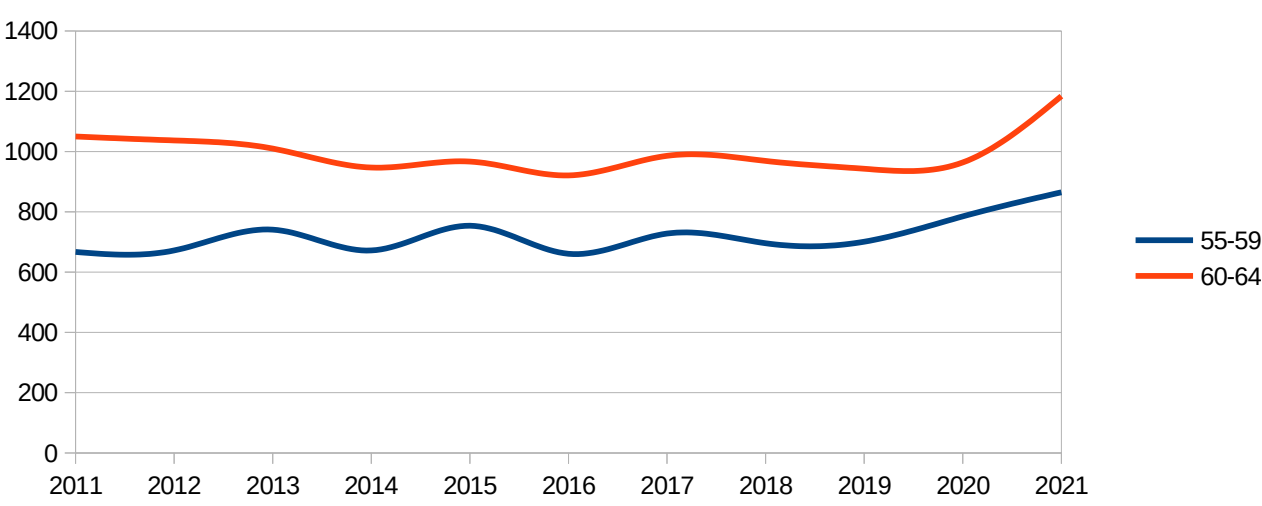
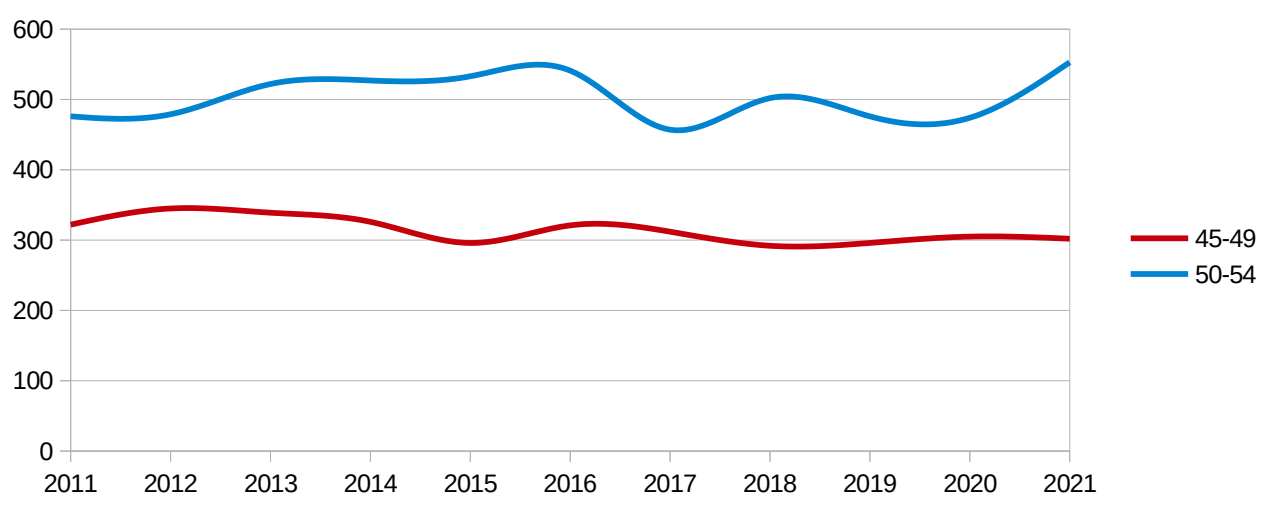
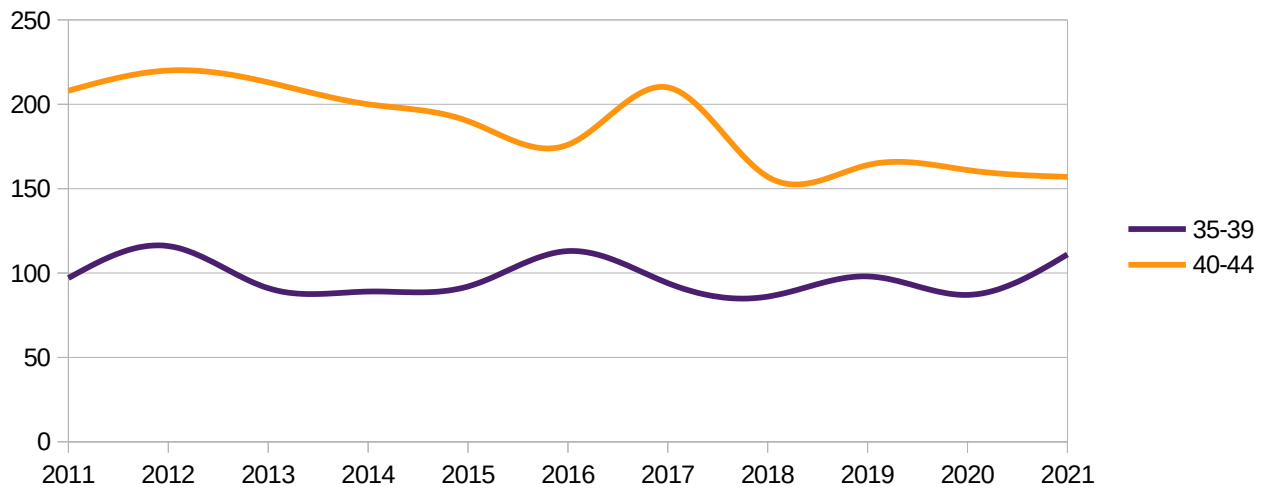
mesi gennaio → agosto
 Dati ISTAT al 31 agosto 2021

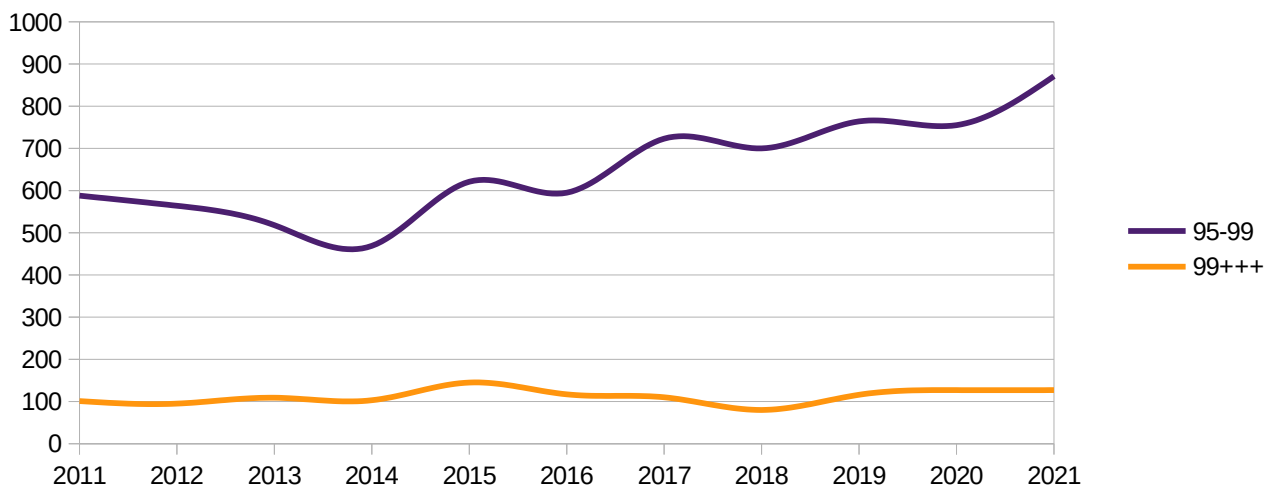
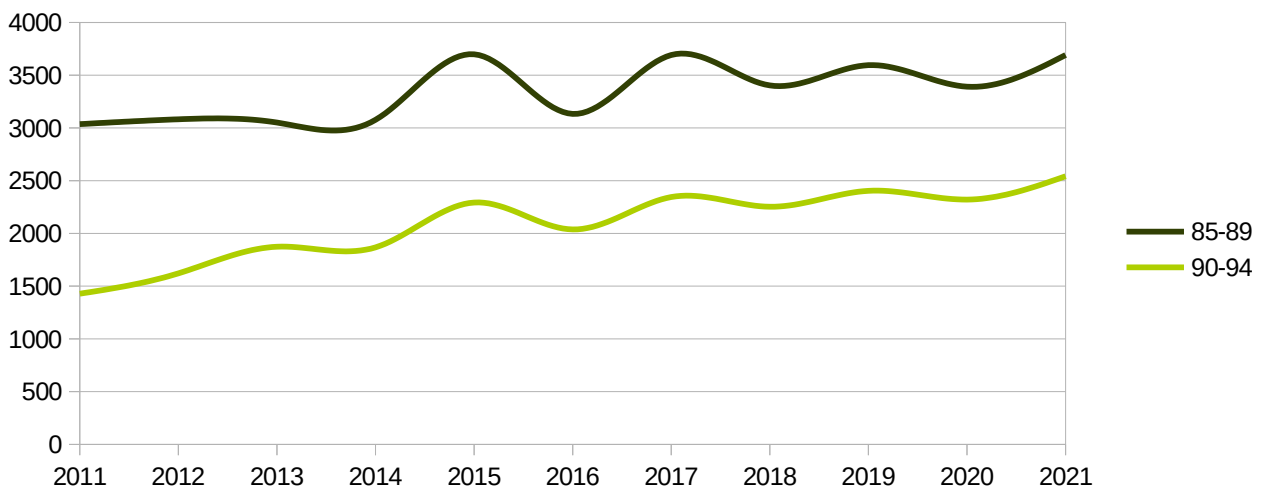
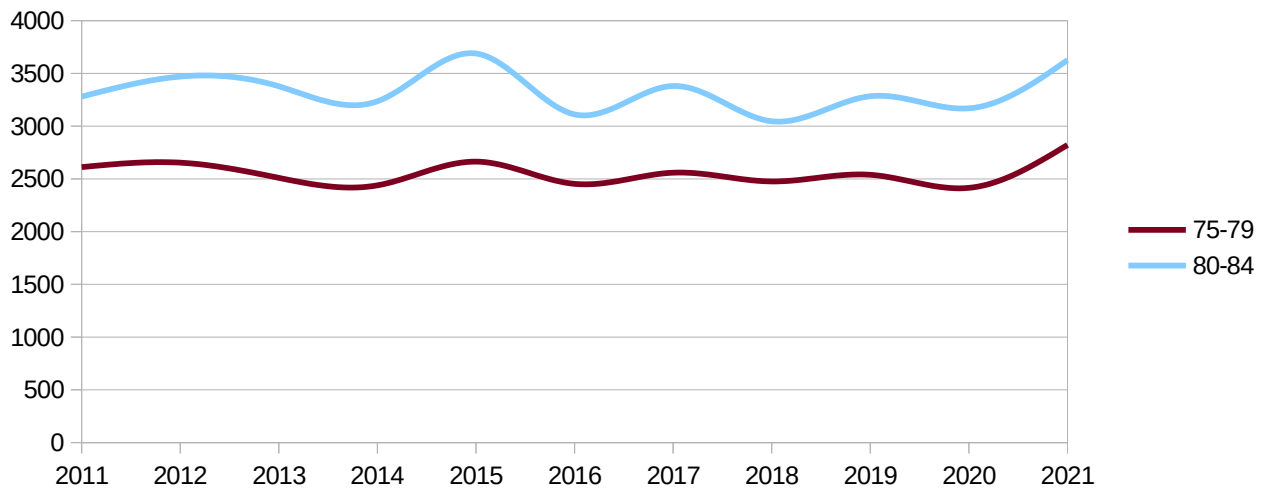
Decessi per fascia d'età

eta	2011	2012	2013	2014	2015	2016	2017	2018	2019	2020	2021
00-00	77	87	75	59	56	55	84	71	51	52	36
01-04	14	9	10	12	10	11	7	11	7	9	5
05-09	11	7	11	7	9	7	6	9	6	4	4
10-14	17	6	9	10	10	8	10	11	7	12	12
15-19	35	30	44	29	33	23	18	29	14	14	19
20-24	29	36	48	32	47	34	29	36	38	30	31
25-29	61	45	55	45	45	45	42	42	37	42	50
30-34	65	76	57	50	62	55	49	50	52	55	58
35-39	97	116	91	89	92	113	94	86	98	87	111
40-44	208	220	213	200	190	176	210	157	164	161	157
45-49	322	345	339	326	296	321	312	292	296	305	302
50-54	476	479	522	527	533	541	457	502	476	474	553
55-59	667	672	741	672	754	661	728	696	701	785	865
60-64	1050	1037	1010	947	967	921	986	969	943	964	1184
65-69	1383	1384	1427	1442	1540	1487	1396	1325	1309	1382	1601
70-74	1869	1875	1881	1817	1872	1750	1967	1938	2006	2093	2365
75-79	2612	2654	2510	2439	2664	2453	2559	2476	2539	2415	2822
80-84	3280	3470	3378	3236	3689	3111	3381	3046	3284	3169	3626
85-89	3036	3082	3051	3077	3698	3133	3691	3403	3595	3391	3691
90-94	1428	1621	1874	1868	2293	2038	2345	2253	2404	2321	2542
95-99	588	564	518	469	621	595	723	700	764	755	871
99+++	101	95	109	103	145	117	110	80	116	127	127









Regione - all -
 Provincia **napoli**
 mese - multiple -

mesi gennaio → agosto
 Dati ISTAT al 31 agosto 2021

Confronto MIN(2011-2019), 2020, 2021, MAX(2011-2019)

eta	MIN	2020	2021	MAX
00-00	51	52	36	87
01-04	7	9	5	14
05-09	6	4	4	11
10-14	6	12	12	17
15-19	14	14	19	44
20-24	29	30	31	48
25-29	37	42	50	61
30-34	49	55	58	76
35-39	86	87	111	116
40-44	157	161	157	220
45-49	292	305	302	345
50-54	457	474	553	541
55-59	661	785	865	754
60-64	921	964	1184	1050
65-69	1309	1382	1601	1540
70-74	1750	2093	2365	2006
75-79	2439	2415	2822	2664
80-84	3046	3169	3626	3689
85-89	3036	3391	3691	3698
90-94	1428	2321	2542	2404
95-99	469	755	871	764
99+++	80	127	127	145

