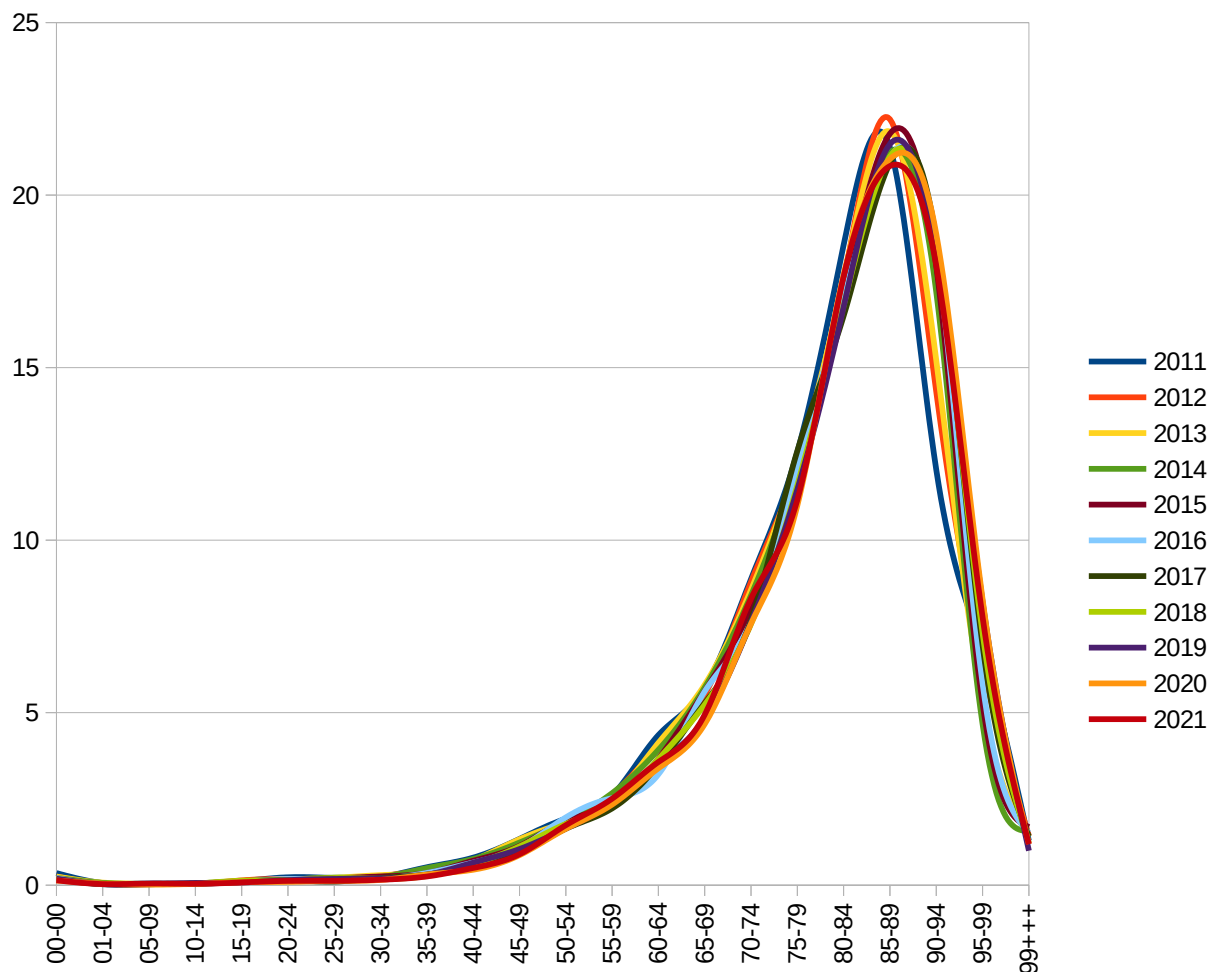


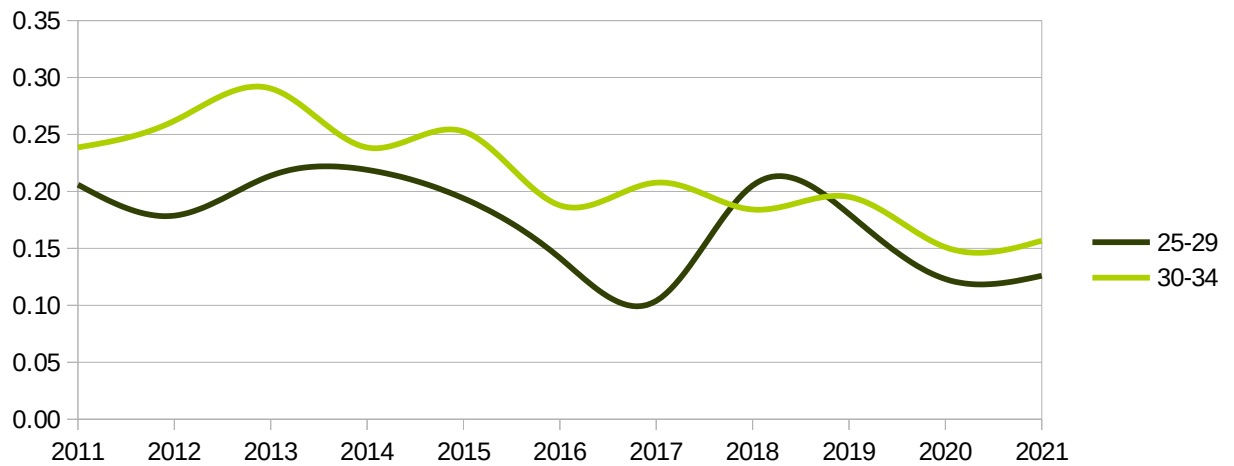
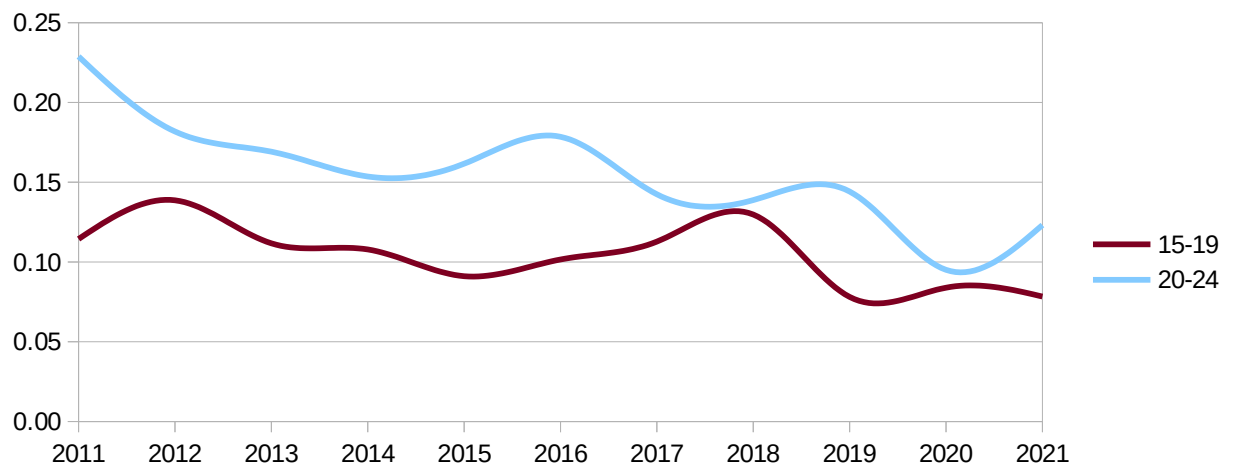
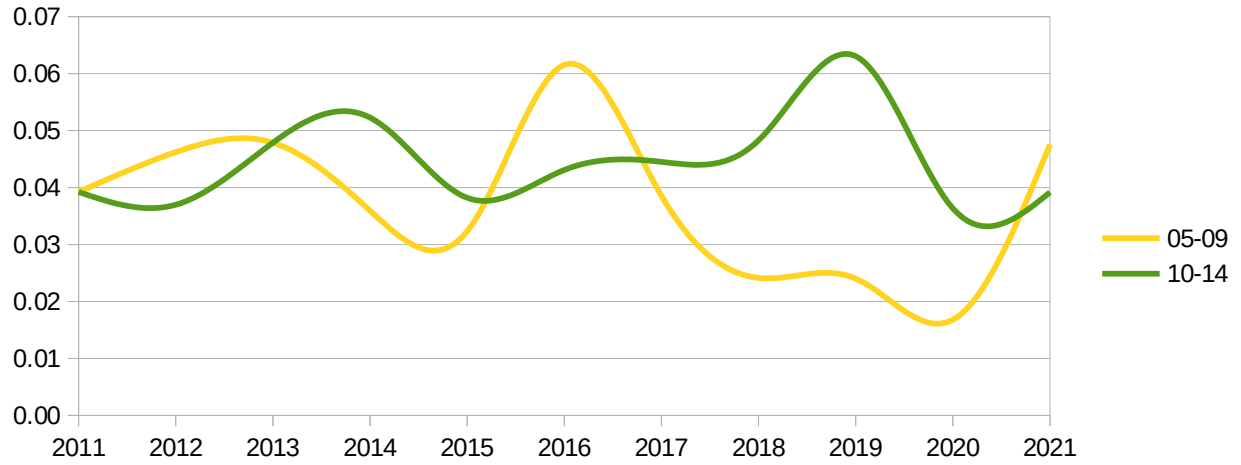
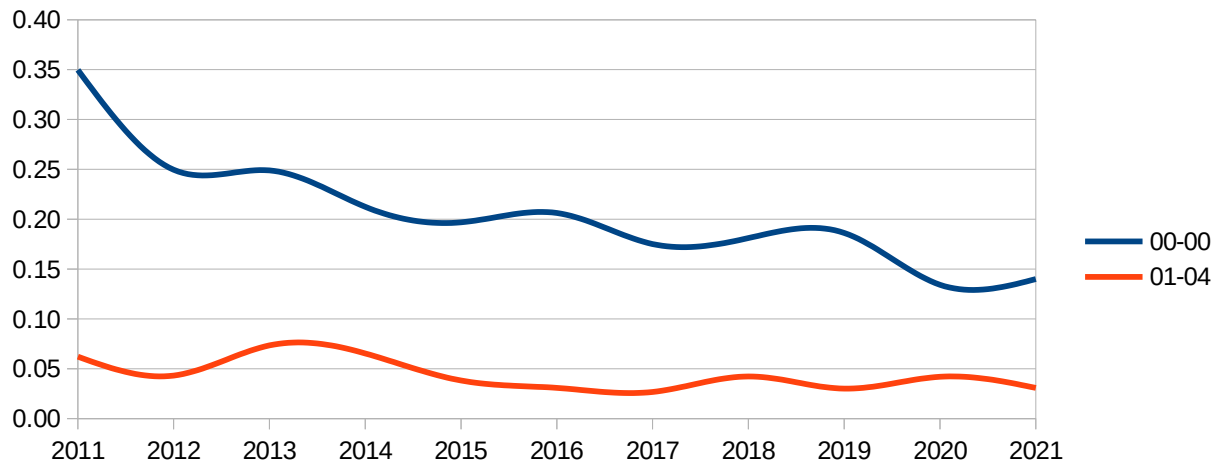
Regione veneto
 Provincia - all -
 mese - multiple -

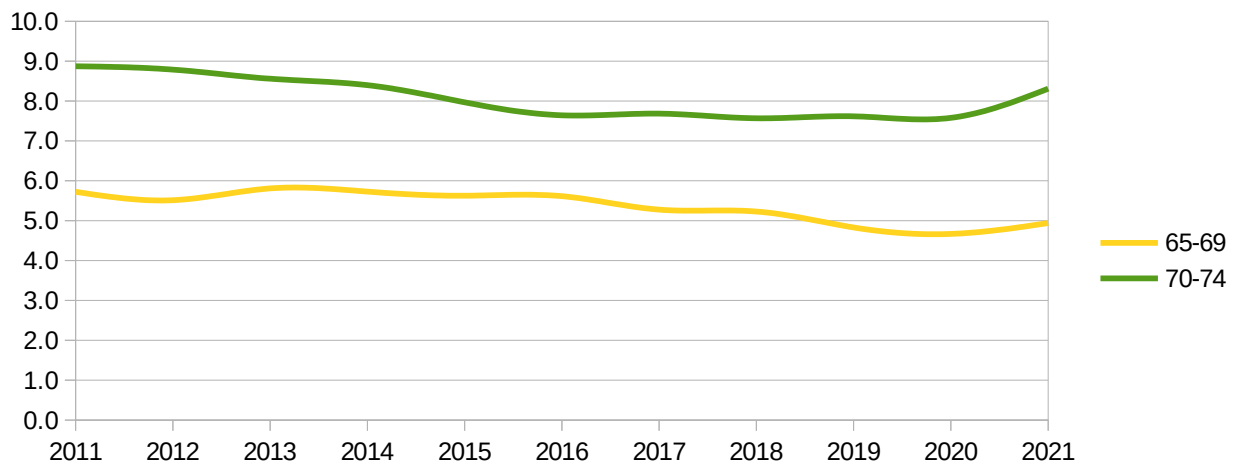
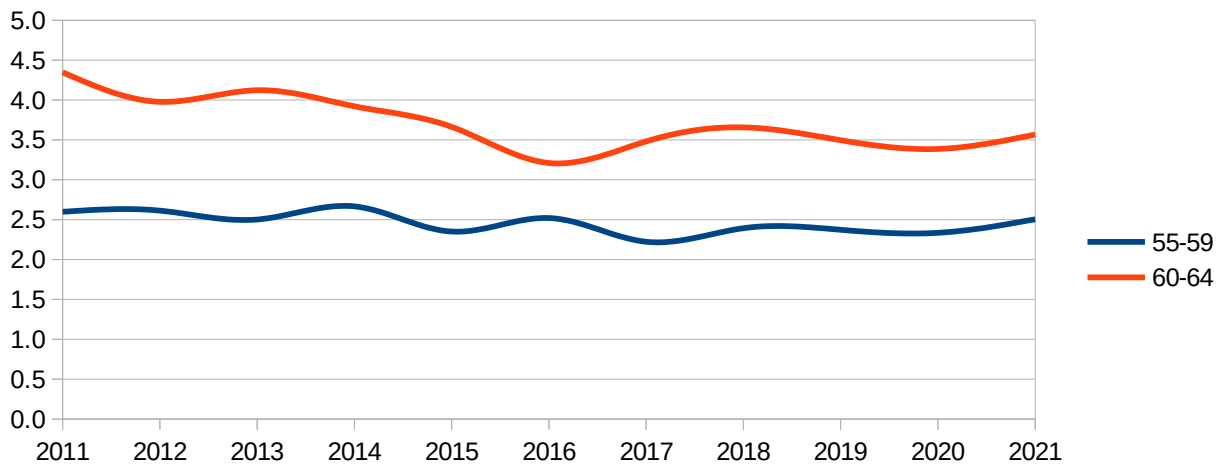
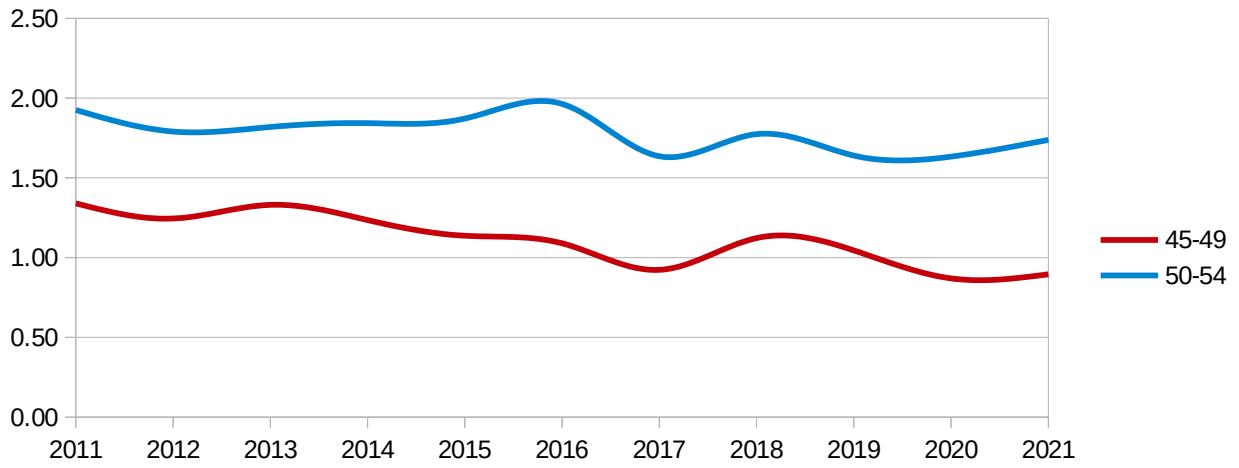
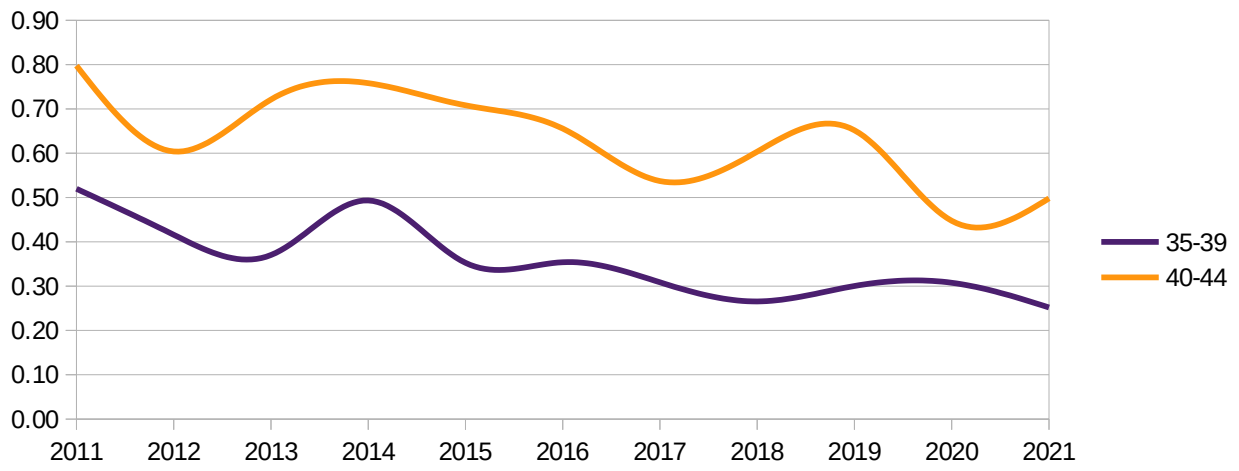
mesi gennaio → agosto
 Dati ISTAT al 31 agosto 2021

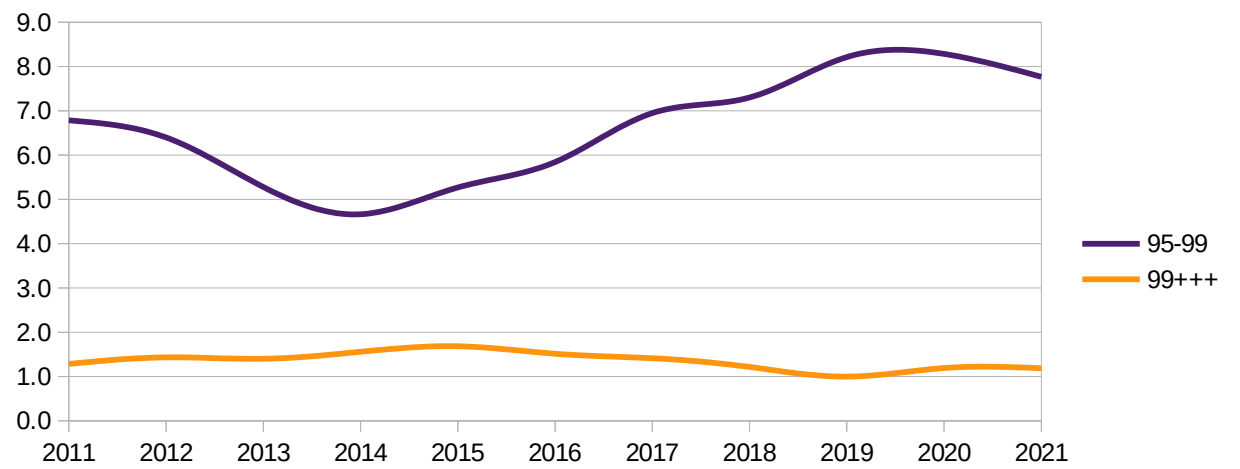
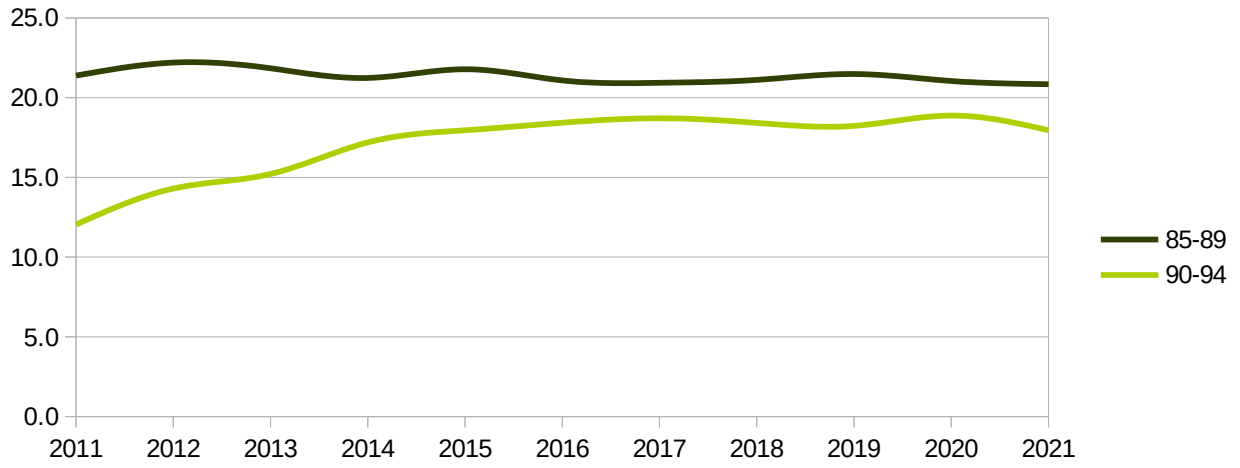
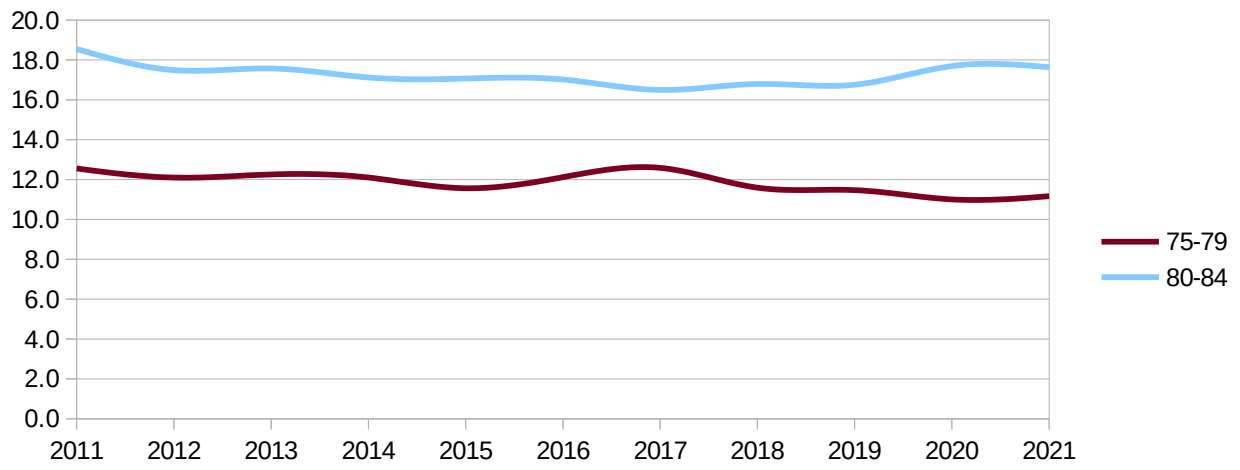
Distribuzione decessi per fascia d'età

eta	2011	2012	2013	2014	2015	2016	2017	2018	2019	2020	2021
00-00	0.35	0.25	0.25	0.21	0.20	0.21	0.18	0.18	0.19	0.13	0.14
01-04	0.06	0.04	0.07	0.07	0.04	0.03	0.03	0.04	0.03	0.04	0.03
05-09	0.04	0.05	0.05	0.04	0.03	0.06	0.04	0.02	0.02	0.02	0.05
10-14	0.04	0.04	0.05	0.05	0.04	0.04	0.04	0.05	0.06	0.04	0.04
15-19	0.11	0.14	0.11	0.11	0.09	0.10	0.11	0.13	0.08	0.08	0.08
20-24	0.23	0.18	0.17	0.15	0.16	0.18	0.14	0.14	0.14	0.10	0.12
25-29	0.21	0.18	0.21	0.22	0.19	0.14	0.10	0.21	0.18	0.12	0.13
30-34	0.24	0.26	0.29	0.24	0.25	0.19	0.21	0.18	0.20	0.15	0.16
35-39	0.52	0.42	0.37	0.49	0.35	0.35	0.31	0.27	0.30	0.31	0.25
40-44	0.80	0.60	0.72	0.76	0.71	0.66	0.54	0.60	0.65	0.45	0.50
45-49	1.34	1.24	1.33	1.24	1.14	1.09	0.92	1.12	1.05	0.87	0.90
50-54	1.93	1.79	1.82	1.84	1.87	1.96	1.64	1.77	1.64	1.63	1.74
55-59	2.60	2.61	2.50	2.67	2.35	2.52	2.22	2.39	2.37	2.34	2.50
60-64	4.35	3.98	4.12	3.92	3.66	3.21	3.48	3.66	3.50	3.39	3.57
65-69	5.72	5.51	5.81	5.73	5.63	5.61	5.28	5.23	4.83	4.67	4.94
70-74	8.87	8.79	8.56	8.40	7.97	7.64	7.68	7.57	7.62	7.58	8.31
75-79	12.56	12.10	12.26	12.10	11.56	12.12	12.59	11.59	11.47	11.00	11.17
80-84	18.55	17.49	17.57	17.12	17.07	17.02	16.50	16.80	16.76	17.69	17.64
85-89	21.38	22.20	21.84	21.23	21.78	21.08	20.93	21.11	21.48	21.04	20.84
90-94	12.04	14.30	15.21	17.19	17.95	18.43	18.71	18.42	18.23	18.87	17.95
95-99	6.78	6.40	5.28	4.66	5.27	5.84	6.95	7.30	8.21	8.28	7.77
99+++	1.28	1.43	1.40	1.56	1.68	1.51	1.41	1.22	1.00	1.19	1.19







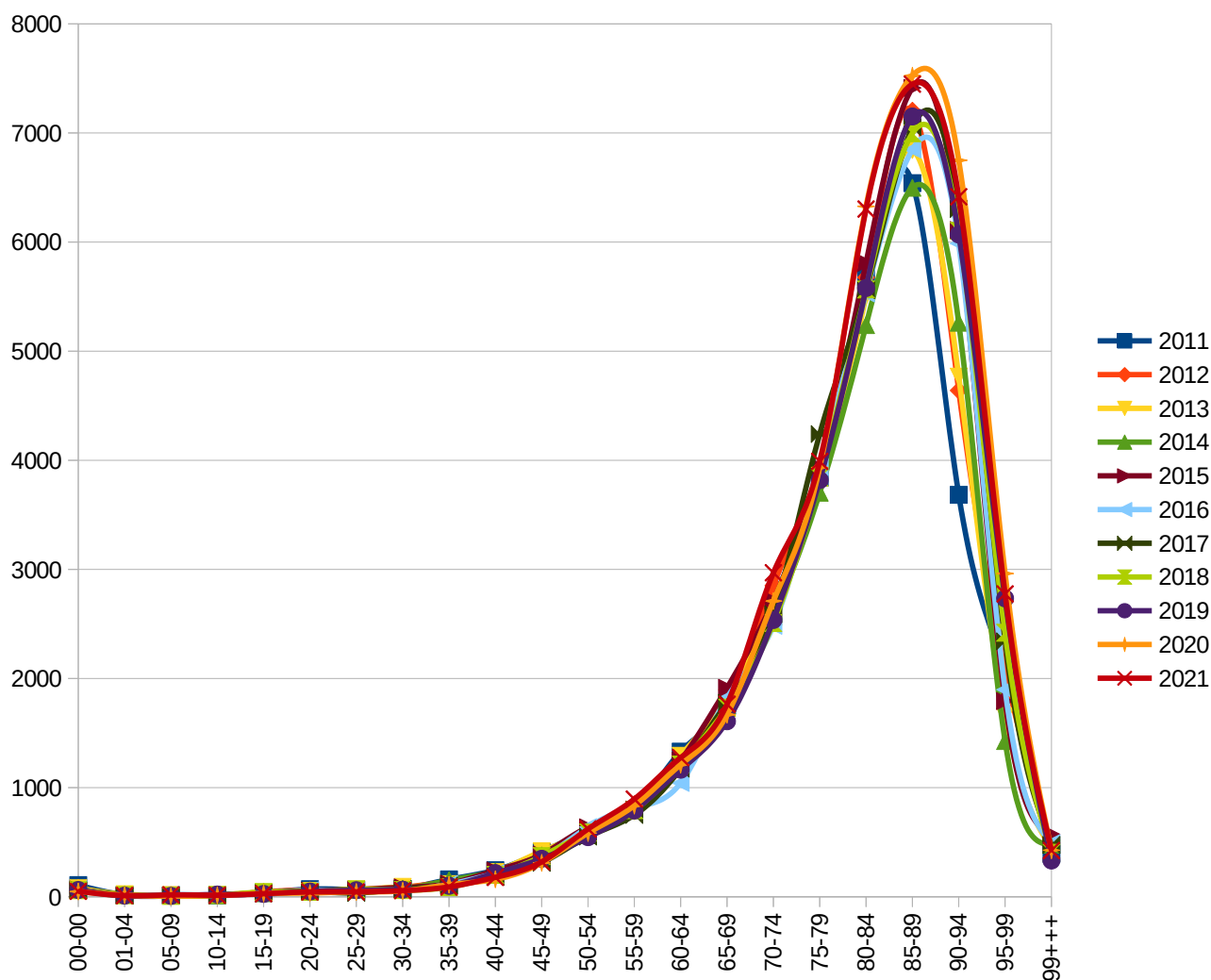


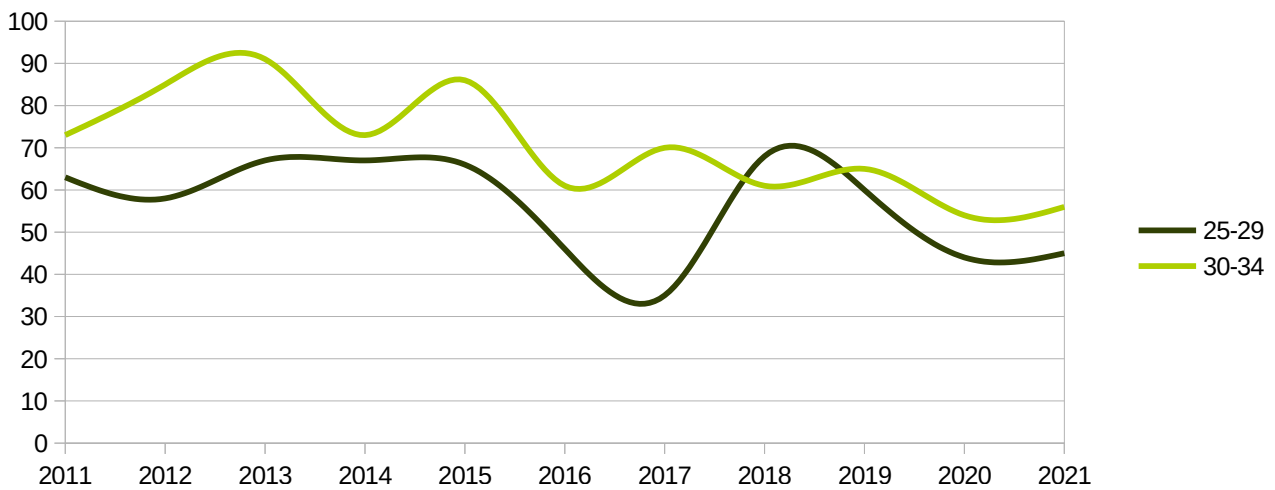
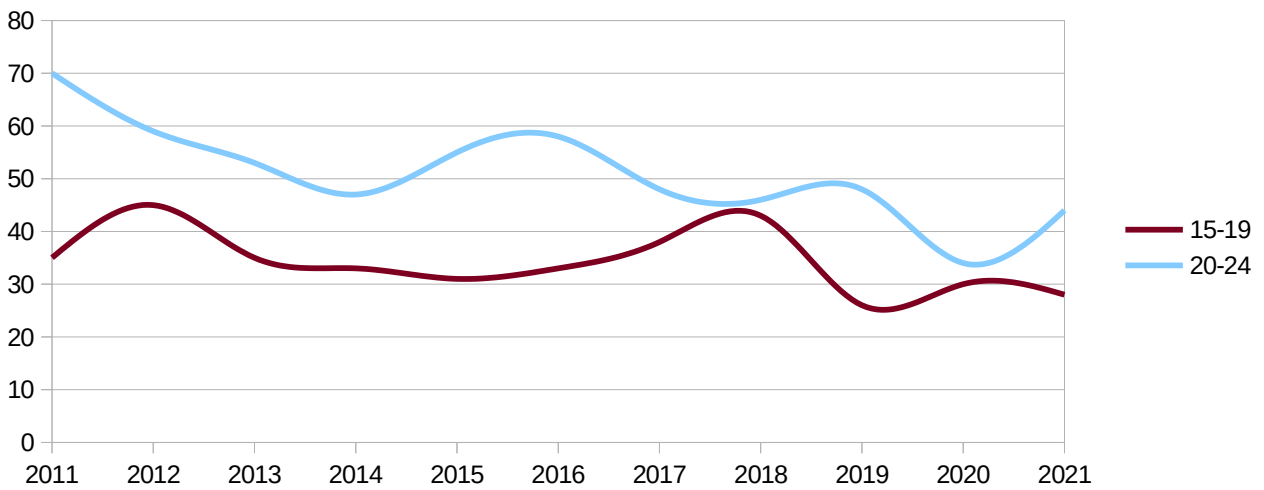
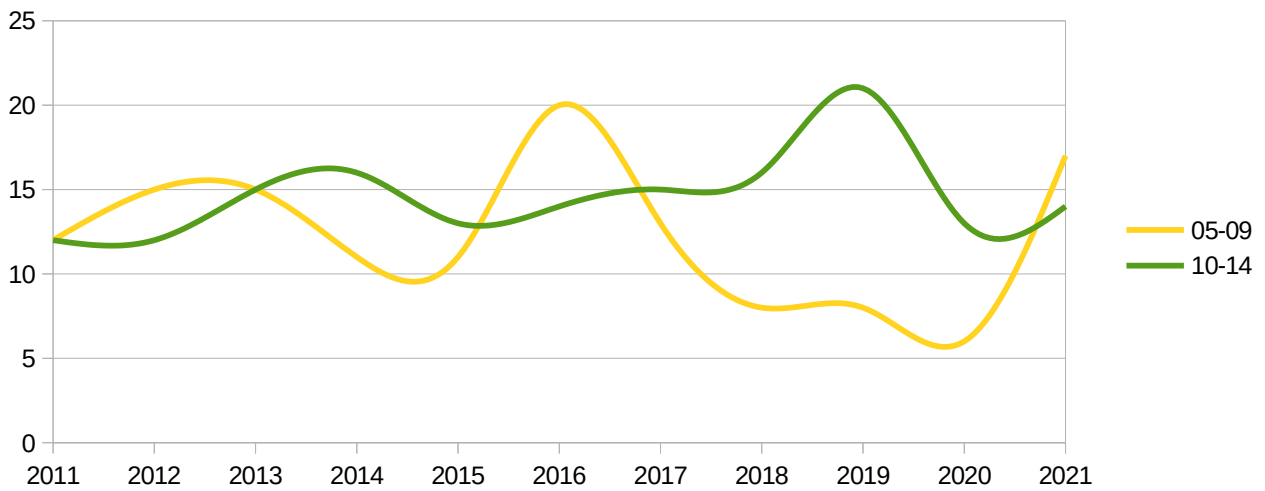
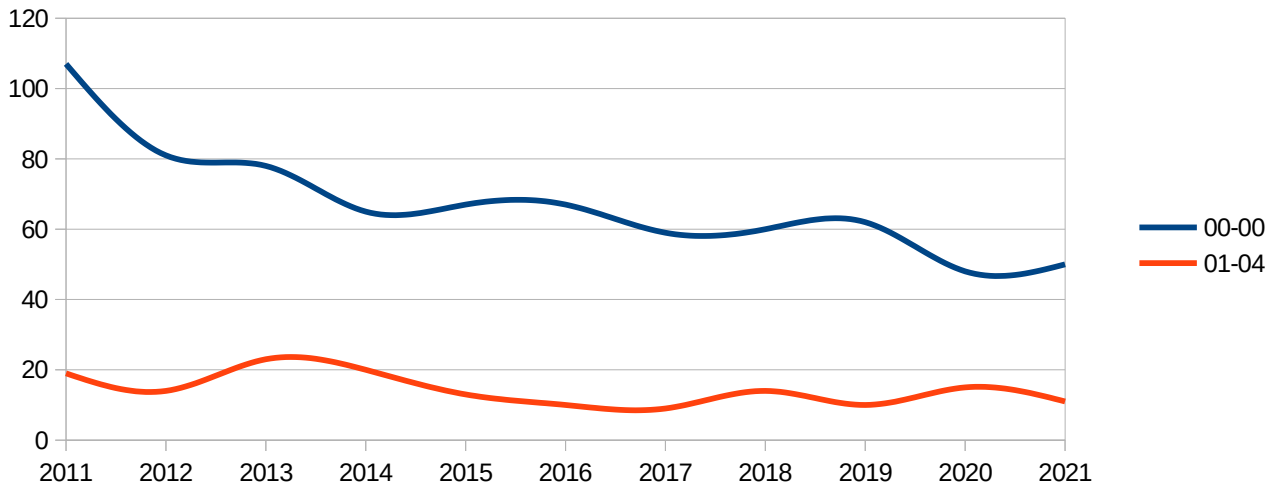
Regione veneto
 Provincia - all -
 mese - multiple -

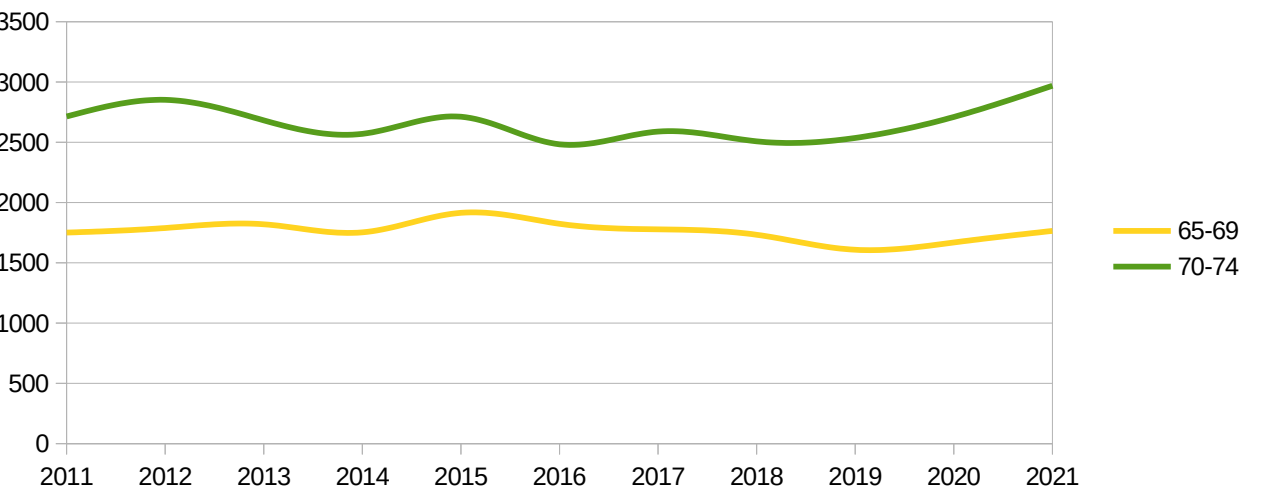
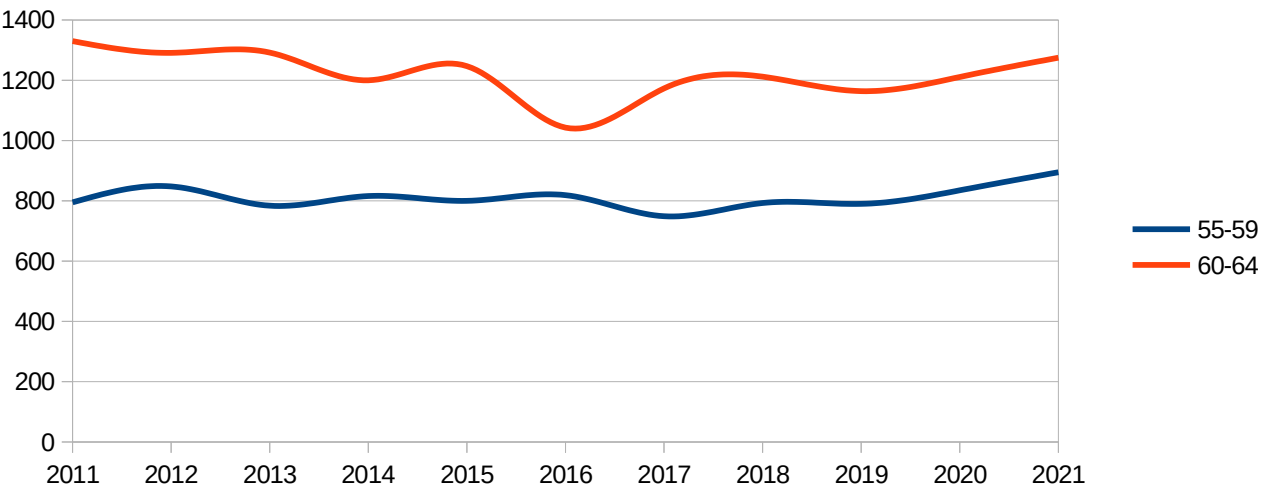
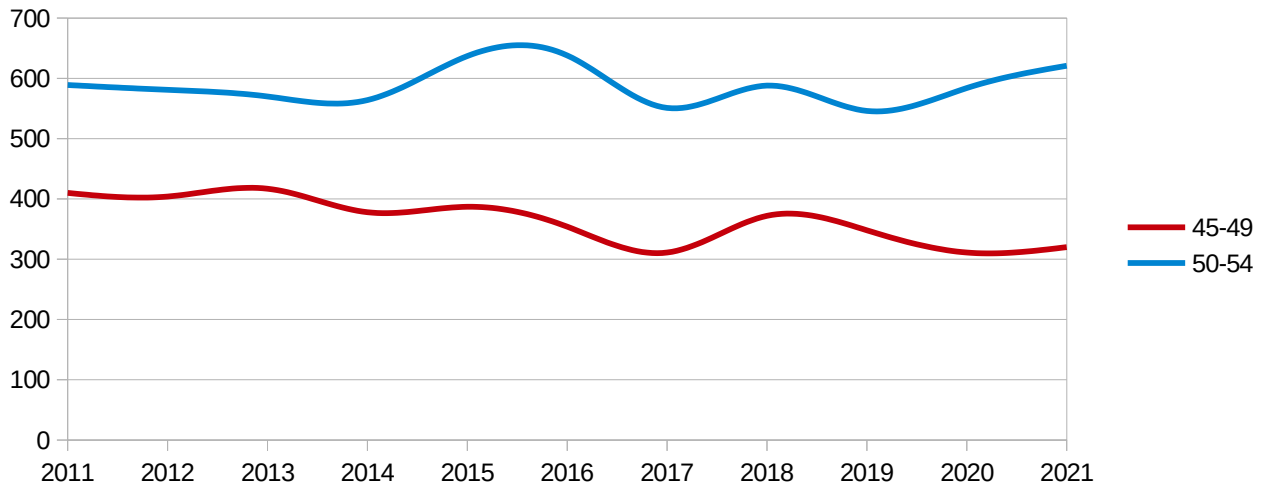
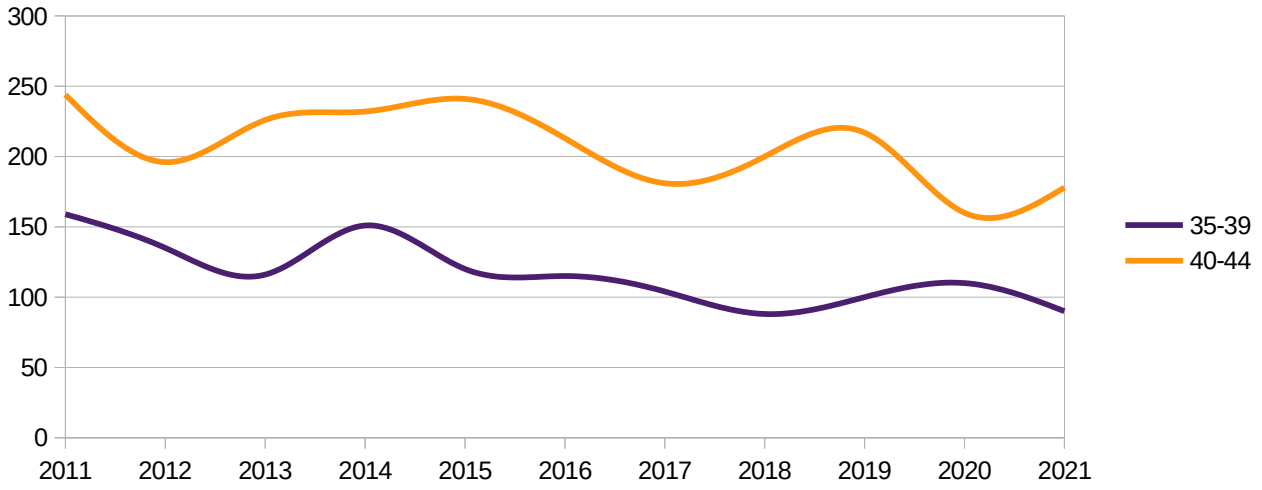
mesi gennaio → agosto
 Dati ISTAT al 31 agosto 2021

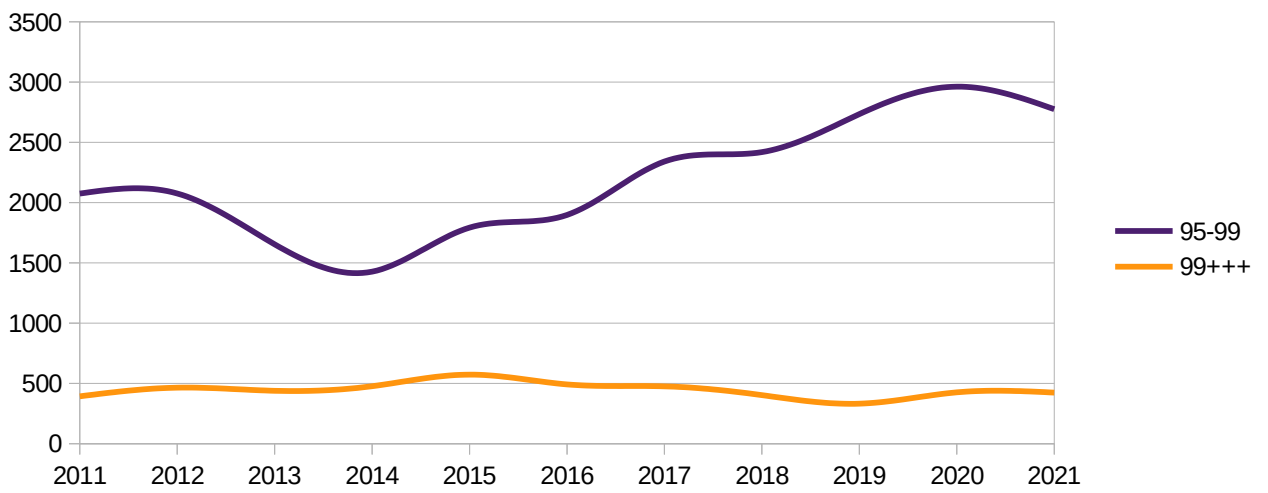
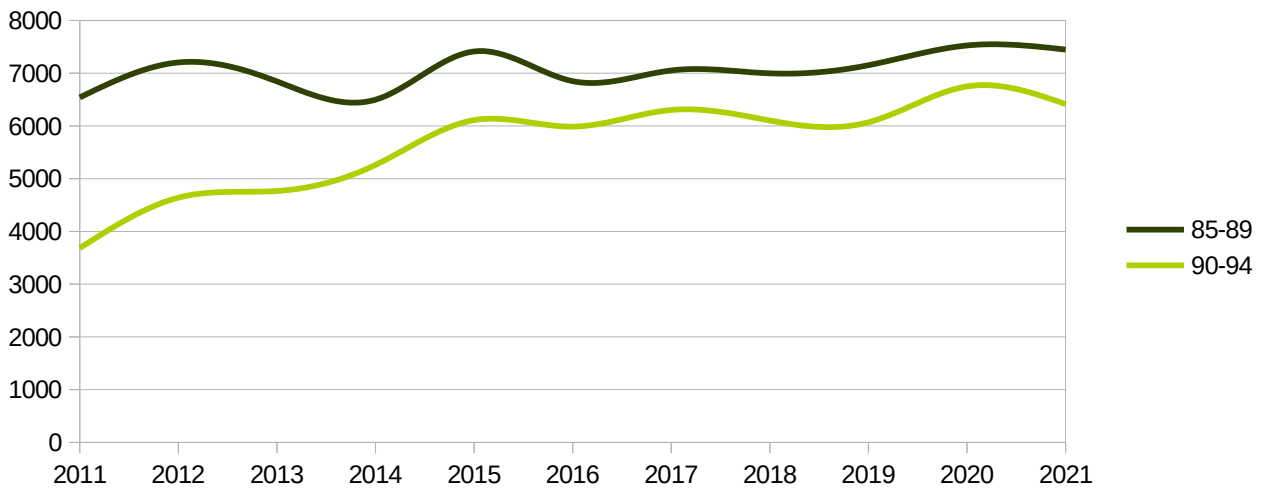
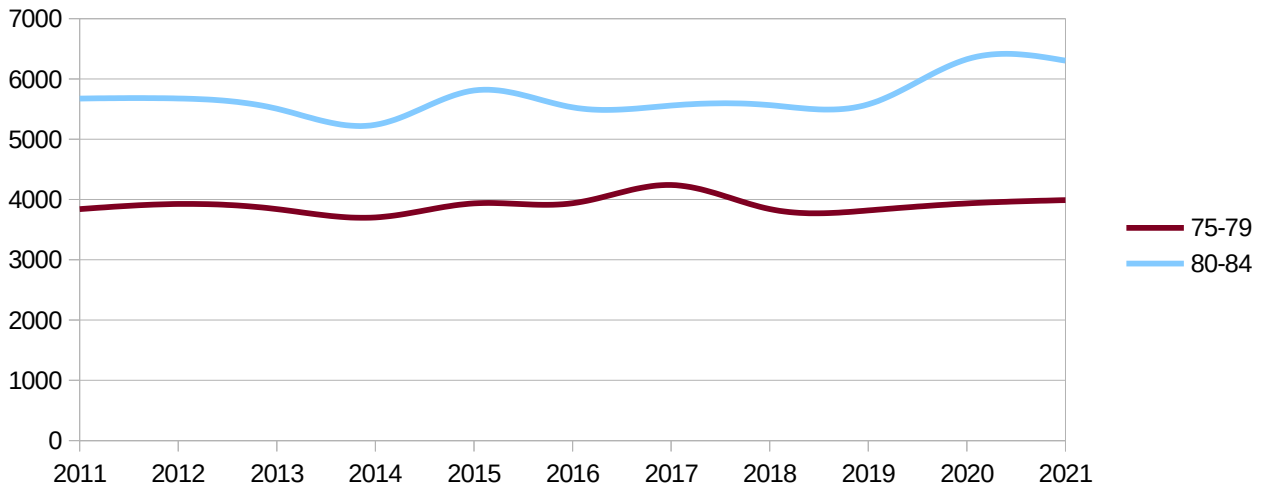
Decessi per fascia d'età

eta	2011	2012	2013	2014	2015	2016	2017	2018	2019	2020	2021
00-00	107	81	78	65	67	67	59	60	62	48	50
01-04	19	14	23	20	13	10	9	14	10	15	11
05-09	12	15	15	11	11	20	13	8	8	6	17
10-14	12	12	15	16	13	14	15	16	21	13	14
15-19	35	45	35	33	31	33	38	43	26	30	28
20-24	70	59	53	47	55	58	48	46	48	34	44
25-29	63	58	67	67	66	46	35	68	60	44	45
30-34	73	85	91	73	86	61	70	61	65	54	56
35-39	159	135	116	151	120	115	104	88	100	110	90
40-44	244	196	226	232	241	213	181	200	217	160	178
45-49	410	404	417	378	387	354	311	372	348	311	320
50-54	589	581	570	564	637	638	551	588	546	584	621
55-59	795	848	784	816	800	819	749	793	790	835	895
60-64	1330	1291	1292	1200	1247	1043	1173	1212	1164	1211	1275
65-69	1751	1789	1820	1753	1915	1824	1778	1733	1608	1669	1765
70-74	2714	2852	2682	2570	2712	2483	2589	2508	2536	2710	2969
75-79	3841	3926	3841	3703	3936	3938	4241	3842	3819	3935	3990
80-84	5675	5676	5506	5239	5809	5529	5559	5566	5579	6327	6303
85-89	6540	7204	6844	6498	7413	6849	7052	6997	7151	7525	7447
90-94	3684	4640	4767	5261	6111	5987	6303	6103	6069	6749	6415
95-99	2075	2076	1654	1427	1793	1898	2341	2419	2734	2962	2775
99+++	393	465	439	477	573	492	476	403	332	426	424









Regione **veneto**
 Provincia **- all -**
 mese **- multiple -**

mesi gennaio → agosto
 Dati ISTAT al 31 agosto 2021

Confronto MIN(2011-2019), 2020, 2021, MAX(2011-2019)

eta	MIN	2020	2021	MAX
00-00	59	48	50	107
01-04	9	15	11	23
05-09	8	6	17	20
10-14	12	13	14	21
15-19	26	30	28	45
20-24	46	34	44	70
25-29	35	44	45	68
30-34	61	54	56	91
35-39	88	110	90	159
40-44	181	160	178	244
45-49	311	311	320	417
50-54	546	584	621	638
55-59	749	835	895	848
60-64	1043	1211	1275	1330
65-69	1608	1669	1765	1915
70-74	2483	2710	2969	2852
75-79	3703	3935	3990	4241
80-84	5239	6327	6303	5809
85-89	6498	7525	7447	7413
90-94	3684	6749	6415	6303
95-99	1427	2962	2775	2734
99+++	332	426	424	573

