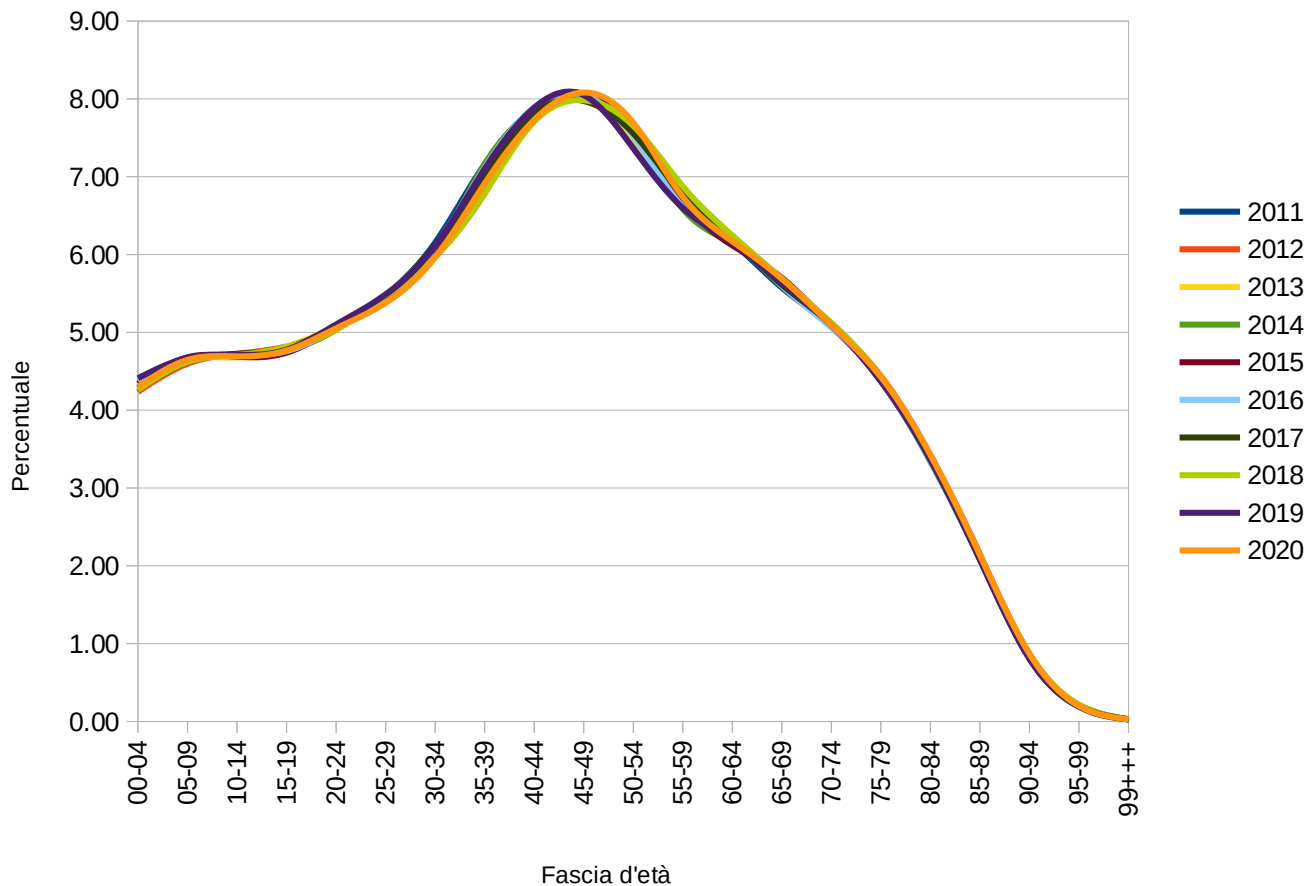


Distribuzione % della popolazione per fascia d'età

Eta	Data										
	2011	2012	2013	2014	2015	2016	2017	2018	2019	2020	
00-04	4.40	4.24	4.32	4.37	4.34	4.38	4.28	4.26	4.41	4.30	
05-09	4.65	4.60	4.66	4.66	4.68	4.64	4.62	4.62	4.67	4.65	
10-14	4.69	4.72	4.68	4.70	4.69	4.70	4.73	4.71	4.71	4.69	
15-19	4.80	4.82	4.82	4.77	4.74	4.76	4.80	4.81	4.78	4.77	
20-24	5.08	5.06	5.08	5.03	5.06	5.06	5.08	5.03	5.10	5.05	
25-29	5.48	5.46	5.49	5.49	5.44	5.48	5.47	5.47	5.49	5.38	
30-34	6.15	5.97	6.09	6.05	5.98	6.11	6.11	5.97	6.11	5.96	
35-39	7.16	6.79	7.00	7.16	7.01	7.12	6.97	6.79	7.10	6.91	
40-44	7.84	7.74	7.80	7.86	7.85	7.89	7.81	7.71	7.89	7.73	
45-49	8.06	7.99	8.00	8.05	8.05	8.05	7.97	7.98	8.05	8.08	
50-54	7.39	7.62	7.44	7.57	7.57	7.52	7.56	7.65	7.36	7.69	
55-59	6.61	6.87	6.70	6.59	6.68	6.61	6.77	6.88	6.60	6.74	
60-64	6.15	6.24	6.23	6.14	6.12	6.17	6.19	6.24	6.15	6.17	
65-69	5.58	5.67	5.63	5.63	5.70	5.60	5.61	5.69	5.64	5.69	
70-74	5.08	5.10	5.12	5.07	5.09	5.06	5.11	5.12	5.09	5.09	
75-79	4.37	4.44	4.40	4.39	4.41	4.39	4.41	4.43	4.37	4.43	
80-84	3.37	3.42	3.38	3.34	3.39	3.35	3.36	3.38	3.37	3.43	
85-89	2.10	2.15	2.09	2.10	2.10	2.08	2.08	2.13	2.08	2.14	
90-94	0.81	0.86	0.83	0.82	0.86	0.81	0.84	0.87	0.81	0.87	
95-99	0.19	0.21	0.21	0.19	0.19	0.20	0.21	0.22	0.19	0.20	
99+++	0.03	0.03	0.03	0.03	0.03	0.03	0.03	0.03	0.03	0.03	

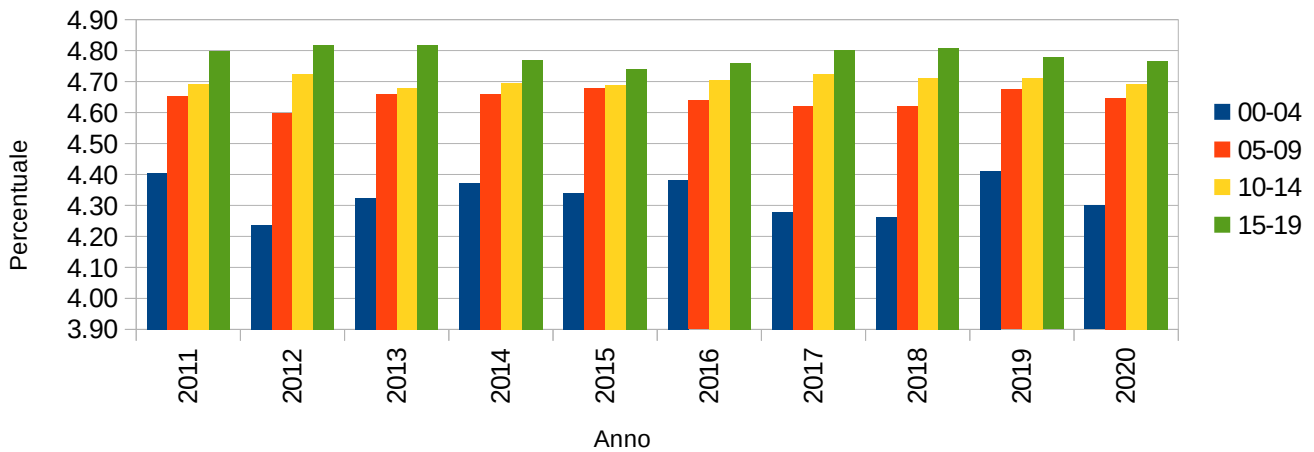
Popolazione 2011 - 2020

Distribuzione % per fascia d'età



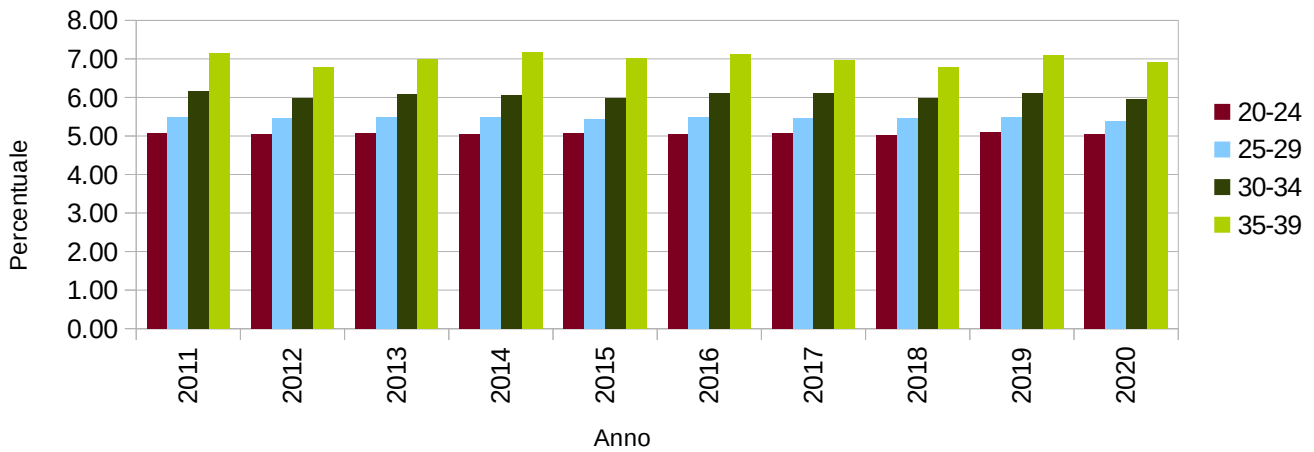
Popolazione 2011 - 2020

Distribuzione % per fascia d'età



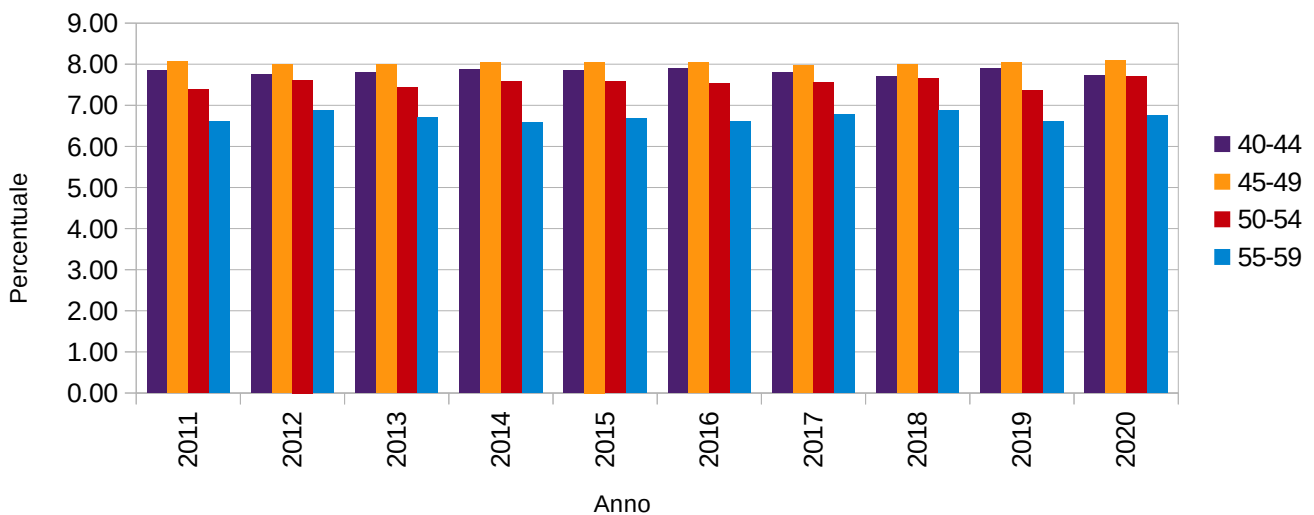
Popolazione 2011 - 2020

Distribuzione % per fascia d'età



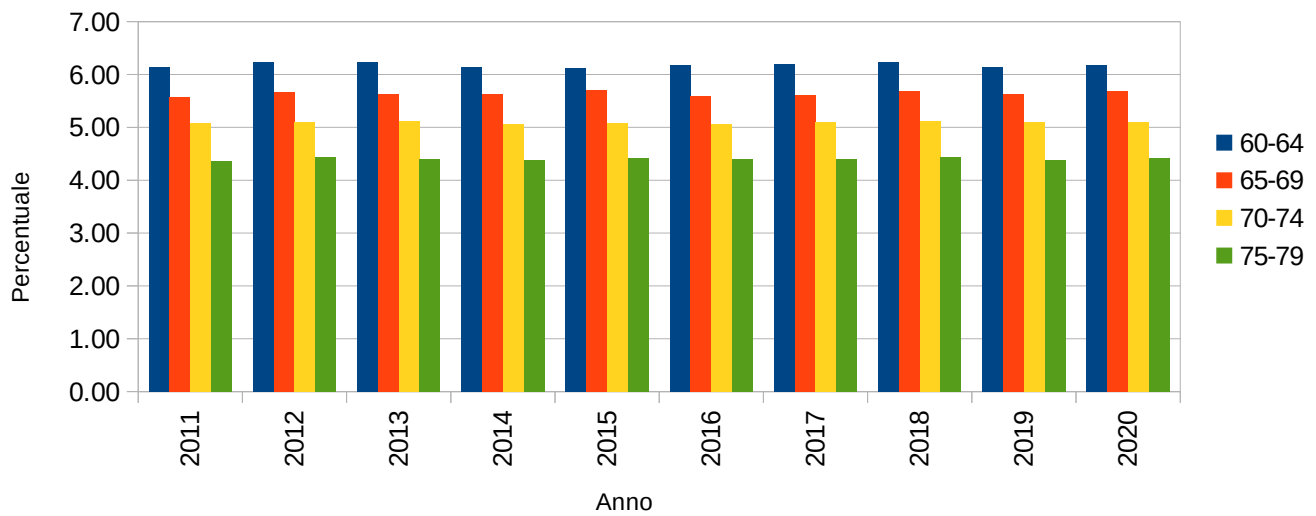
Popolazione 2011 - 2020

Distribuzione % per fascia d'età



Popolazione 2011 - 2020

Distribuzione % per fascia d'età



Popolazione 2011 - 2020

Distribuzione % per fascia d'età

